

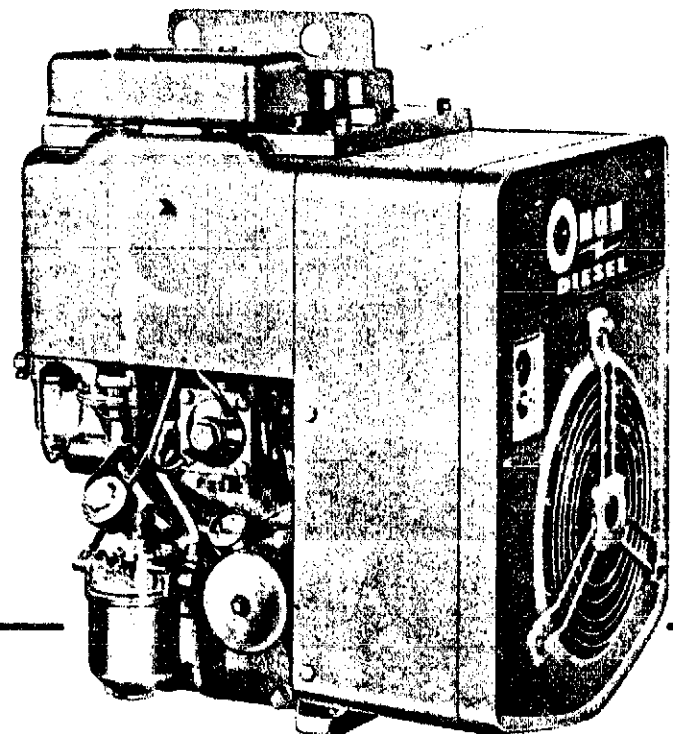
The following catalog
has gaps in its page
numbers, or doesn't
have any numbers.
We have chosen to
leave the page
numbering in the
order that Acrobat
assigns it.

McGraw-Hill

Onan

Parts Manual

DJBA Diesel Engines



967-0256

(SPEC P-W)

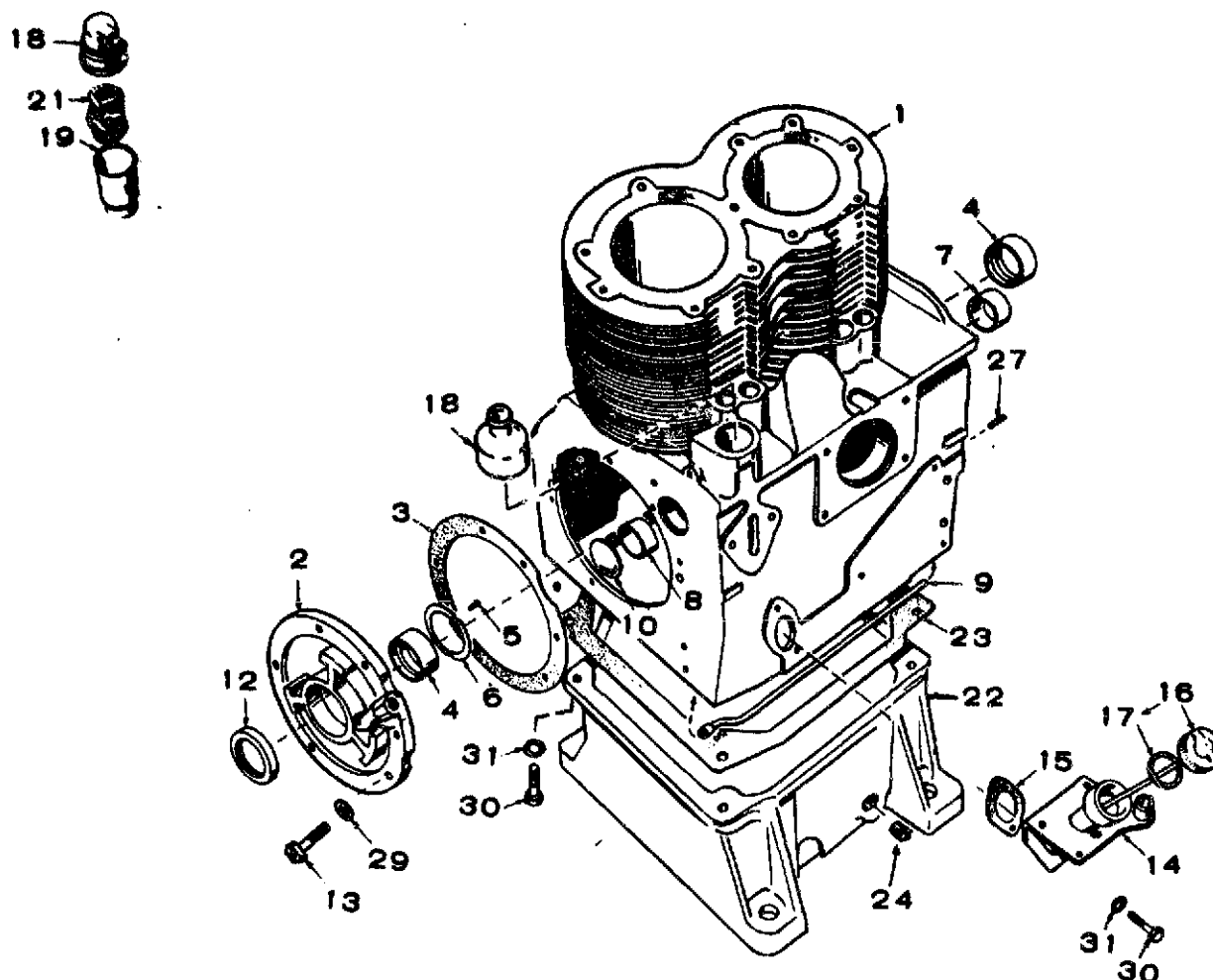
967-0423 (6-79)
DJBA ENGINE PARTS CATALOG

This parts catalog applies to the standard DJBA (formerly DJ60A) Series Industrial Engines.

Parts are arranged in groups of related items. Each illustrated part is identified by a reference number corresponding to the same reference number in the *parts list* for the group. Parts illustrations represent typical items and do not necessarily portray a particular part number.

Right and left sides are determined when *facing* the blower (front) end of the engine.

CYLINDER BLOCK AND OIL BASE

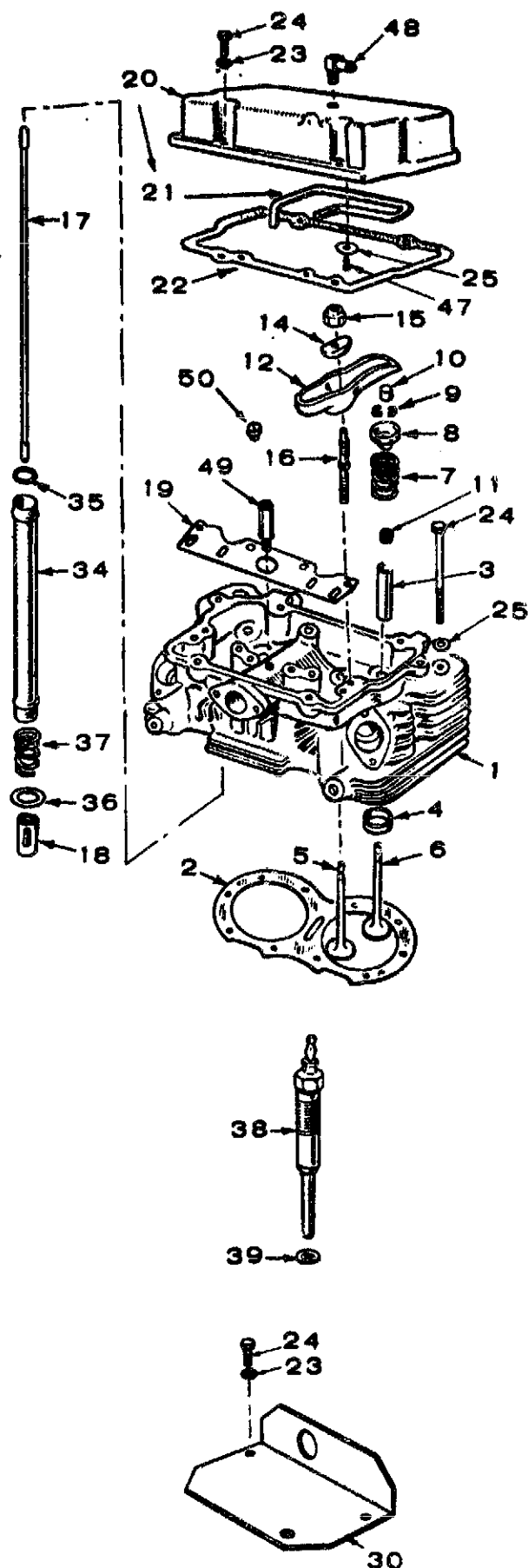


REF. NO.	PART NO.	QTY. USED	PART DESCRIPTION
1	110-1330	1	Block Assembly, Cylinder (Includes Parts Marked *)
2	101-0337	1	*Plate, Bearing (Less Bearing & Pins)
3	101-0386	1	*Gasket and Shim Kit, Bearing Plate
4	BEARING, PRECISION - CRANKSHAFT		
	101-0359	2	*Standard
	101-0359-02	2	.002" Undersize
	101-0359-10	2	.010" Undersize
	101-0359-20	2	.020" Undersize
	101-0359-30	2	.030" Undersize
5	516-0072	4	*Pin, Thrust Washer
6	104-0420	2	*Washer, Crankshaft Thrust
7	101-0363	1	*Bearing, Precision - Camshaft Front
8	101-0365	1	*Bearing, Precision - Camshaft Rear
9	120-0553	1	*Tube, Crankcase Oil
10	517-0053	1	*Plug, Camshaft Opening
12	509-0086	1	*Seal, Crankshaft Rear
13	805-0019	6	*Bolt, Place (3/8-16 x 1-1/4")
14	TUBE, OIL FILL		
	123-0681	1	Specs P and R
	123-1085	1	Begin Spec S
15	123-0667	1	Gasket, Oil Fill Tube
16	CAP AND INDICATOR, OIL FILL		
	123-0651	1	Specs P and R
	123-1058	1	Begin Spec S

REF. NO.	PART NO.	QTY. USED	PART DESCRIPTION
17	123-0191	1	Gasket, Cap
18	CAP, BREATHER TUBE		
	123-0787	1	Specs P through T
	123-1168	1	Begin Spec V
19	TUBE, BREATHER		
	123-0645	1	*Specs P through T
	123-0952	1	*Begin Spec V
21	123-1283	1	Filter, Breather - Specs P through T
22	102-0448	1	Base, Oil
23	102-0451	1	Gasket, Oil Base
24	505-0056	1	Plug, Pipe (1/2")
27	516-0141	2	*Pin, Dowel - Gear Cover Locating
18	123-1168	1	Cap, Breather - Begin Spec V
29	526-0245	6	Washer, Bearing Plate Mounting
30	SCREW, CAP - HEX HEAD		
	800-0026	2	Oil Fill Tube Mounting (5/16-18 x 3/4")
	800-0073	4	Oil Base Mounting (7/16-14 x 1-1/2")
31	WASHER, LOCK - SPRING		
	850-0045	2	Oil Fill Tube Mounting (5/16")
	850-0055	4	Oil Base Mounting (7/16")

* - Parts included in 110-1330 Cylinder Block Assembly.

CYLINDER HEAD, VALVE AND ROCKER BOX

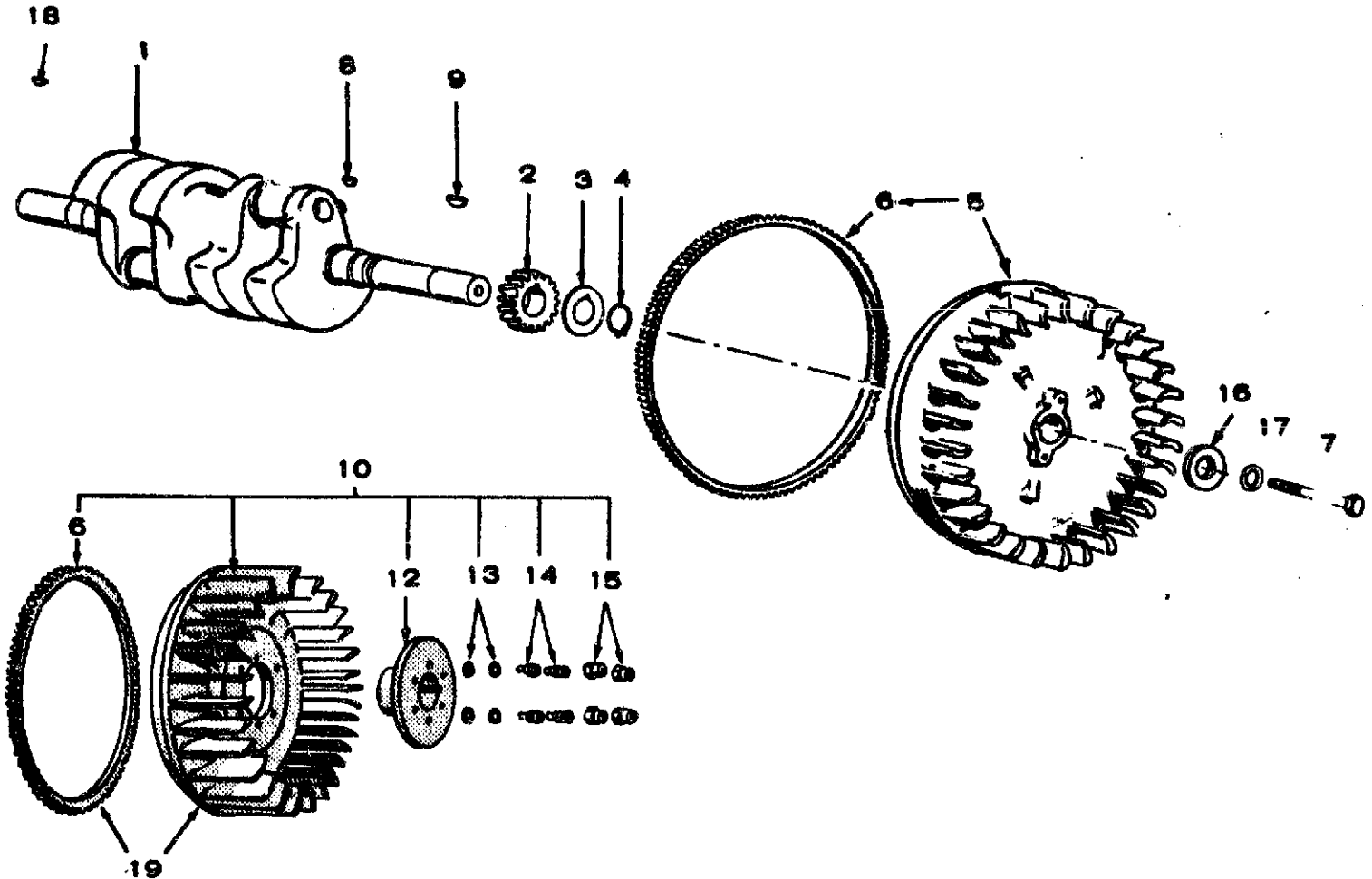


REF. NO.	PART NO.	QTY. USED	PART DESCRIPTION
	110-2940	1	Head Assembly, Cylinder (Includes Parts Marked *)
1	110-1853	1	*Head, Cylinder (Includes valve seats and valve guides)
2	110-1223	1	Gasket, Cylinder Head
3	GUIDE, VALVE		
	110-1501	4	*Standard
	110-1501-01	4	.001" Oversize
	110-1501-05	4	.005" Oversize
4	INSERT, VALVE SEAT, STELLITE		
	110-1268	4	*Standard
	110-1268-02	4	.002" Oversize
	110-1268-05	4	.005" Oversize
	110-1268-10	4	.010" Oversize
	110-1268-25	4	.025" Oversize
5	110-1320	2	*Valve, Intake
6	110-1278	2	*Valve, Exhaust
7	110-1221	4	*Spring, Valve
8	110-1220	4	*Retainer, Valve Spring
9	110-0858	8	*Lock, Valve Spring Retainer
10	110-0859	4	Cap, Valve Stem
11	509-0132	2	*Seal, Oil - Intake Valve (Includes Retainer Rings)
12	ARM, ROCKER		
	115-0128	2	Exhaust
	115-0129	2	Intake
14	115-0127	4	Ball, Rocker Arm
15	115-0150	4	Nut, Lock - Rocker Arm
16	115-0152	4	*Stud, Rocker Arm
17	115-0149	4	Rod, Push - Valve
18	115-0195	4	*Tappet, Valve
19	115-0196	1	Guide, Push Rod
20	COVER, ROCKER		
	115-0134	1	Specs P through T (Includes Oil Line)
	115-0199	1	Begin Spec V (Includes Oil Line)
21	120-0628	1	Line, Oil Rocker Cover
22	115-0130	1	Gasket, Rocker Cover
23	WASHER, LOCK - SPRING		
	850-0045	4	Rocker Cover Mounting (5/16")
	850-0060	1	Lifting Bracket Mounting (1/2")
24	SCREW, HEX CAP		
	800-0503	6	Cylinder Head Mounting (3/8-16 x 1-3/4")
	110-1264	5	Cylinder Head Mounting (3/8-16 x 4-1/4")
	800-0031	4	Rocker Cover Mounting (5/16-18 x 1-1/4")
	800-0091	1	Lifting Bracket Mounting (1/2-13 x 1-1/4")
25	WASHER, FLAT		
	526-0130	1	Oil Line Mounting
	526-0174	7	Cylinder Head Mounting
30	403-0660	1	Bracket, Lifting
34	115-0151	4	Shield, Push Rod
35	509-0084	8	O-Ring, Push Rod Shield
36	115-0155	4	Washer, Push Rod Shield
37	115-0146	4	Spring, Retaining - Push Rod Shield
38	333-0106	2	Kit, Glow Plug (Includes Gasket)
39	110-0546	2	Gasket, Glow Plug
47	809-0042	1	Screw, Oil Line Mounting - Rocker Cover
48	502-0304	1	Elbow, Breather - Begin Spec V
49	123-1140	1	*Standpipe, Breather - Begin Spec V
50	505-0008	1	*Plug, Pipe (1/8") - Specs P through T

* - Parts included in 110-2940 Cylinder Head Assembly.
- Included in 110-1330 Cylinder Block Assembly.

Redistribution or publication of this document by any means, is strictly prohibited.

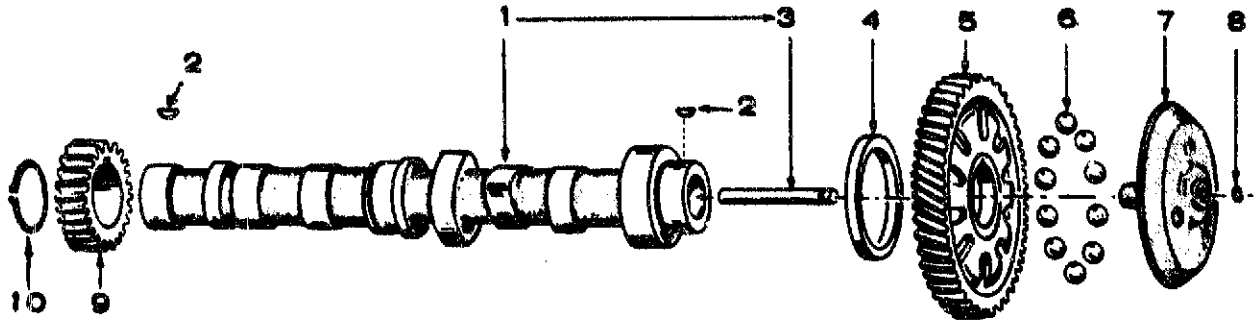
CRANKSHAFT AND FLYWHEEL



REF. NO.	PART NO.	QTY. USED	PART DESCRIPTION
1	CRANKSHAFT		
	104-0854	1	Standard
	104-0855	1	With Optional Clutch
2	104-0416	1	Gear
3	104-0416	1	Washer, Retainer
4	518-0188	1	Ring, Lock
5	FLYWHEEL (Includes Ring Gear) - SPEC P AND BEGIN SPEC T		
	104-0470	1	Standard
	191-0406	1	With Optional Flywheel Alternator
6	104-0423	1	Gear, Ring
7	800-0500	1	Screw, Flywheel (7/16-14 x 5-1/2")
8	515-0001	1	Key, Gear to Crankshaft
9	515-0153	1	Key, Flywheel to Crankshaft
10	FLYWHEEL (Includes Ring Gear and Hub Assembly) - SPEC R AND S		
	134-1406	1	Standard
	134-1556	1	With Optional Flywheel Alternator

REF. NO.	PART NO.	QTY. USED	PART DESCRIPTION
12	134-1401	1	Hub, Flywheel - Specs R and S
13	526-0187	4	Washer, Flat - Hub to Flywheel (Special) - Specs R and S
14	104-0543	4	Spacer & Washer Assembly, Hub to Flywheel - Specs R and S
15	115-0150	4	Nut, Hub to Flywheel - Specs R and S
16	526-0185	1	Washer, Flat - Flywheel Mounting
17	850-0055	1	Washer, Lock - Spring (7/16)
18	515-0003	1	Key, Crankshaft Stub
19	FLYWHEEL (Includes Ring Gear) Specs R and S		
	134-1404	1	Standard
	134-1475		With Optional Flywheel Alternator

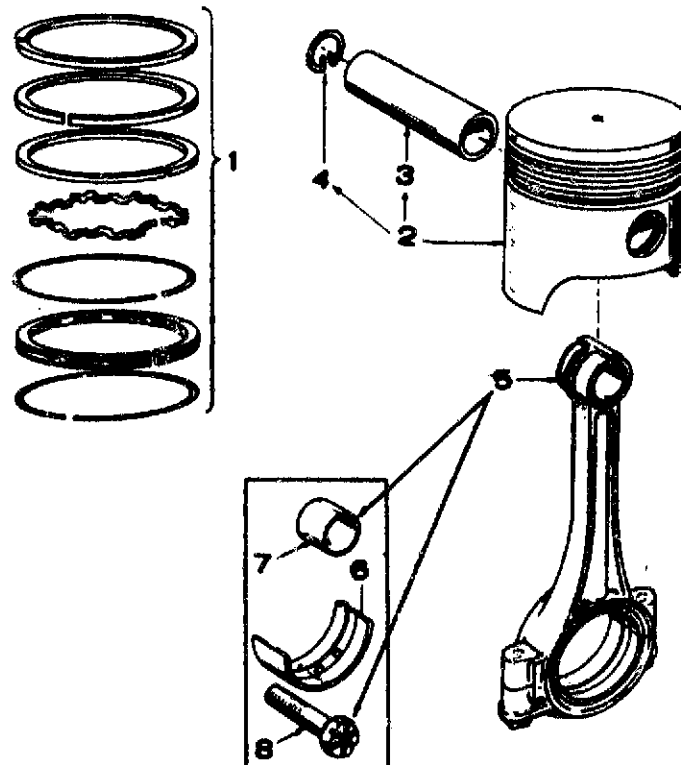
CAMSHAFT



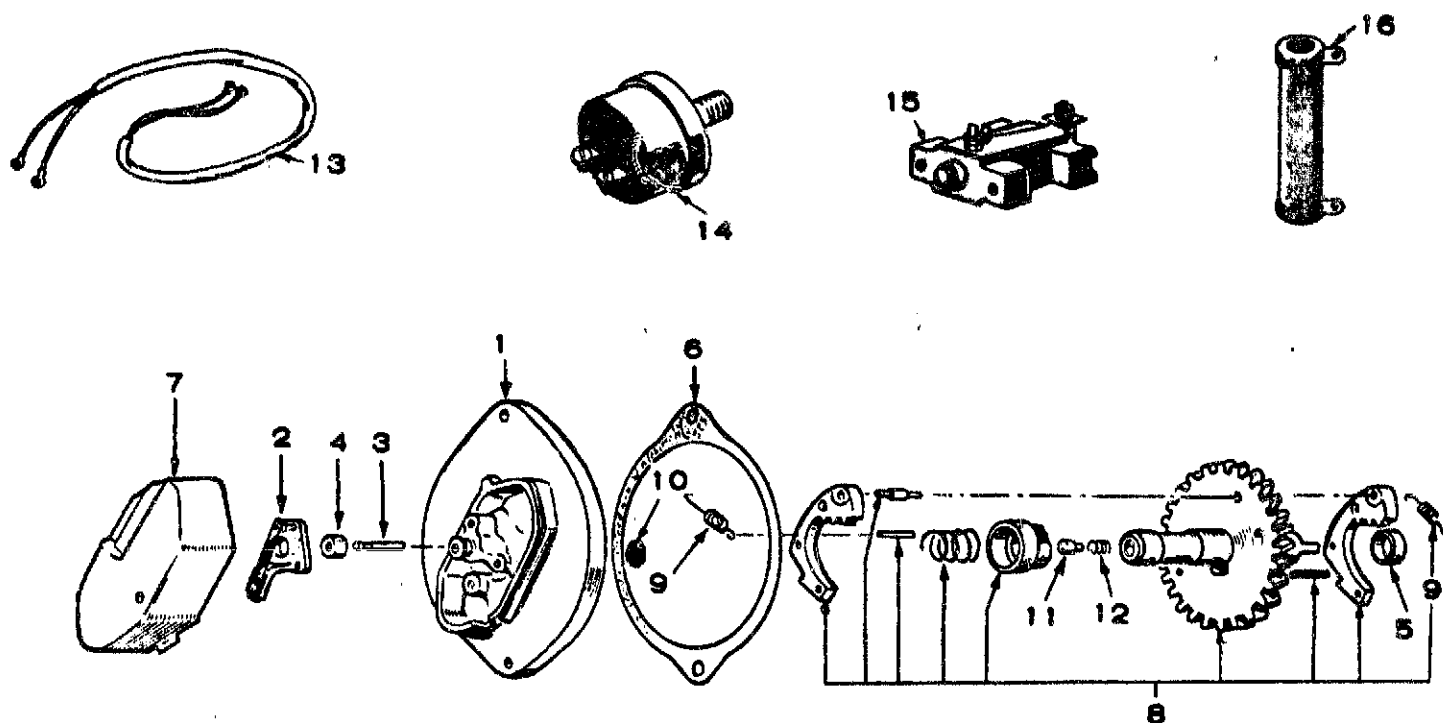
REF. NO.	PART NO.	QTY. USED	PART DESCRIPTION
1	105-0286	1	Camshaft (Includes Center Pin)
2	515-0001	2	Key, Cam
3	150-0075	1	Pin, Camshaft Center
4	105-0205	1	Washer, Camshaft Thrust
5	105-0218	1	Gear, Camshaft (Includes Flyball Spacer & Plate)
6	510-0046	10	Ball, Fly - Governor
7	150-0775	1	Cup, Governor
8	150-0078	1	Ring, Snap - Center Pin
9	147-0142	1	Gear, Drive - Injection Pump
10	518-0195	1	Ring, Snap - Injection Pump Drive Gear

PISTON AND ROD

REF. NO.	PART NO.	QTY. USED	PART DESCRIPTION
1	RING SET, PISTON		
	113-0130	2	Standard
	113-0130-05	2	.005" Oversize
	113-0130-10	2	.010" Oversize
	113-0130-20	2	.020" Oversize
	113-0130-30	2	.030" Oversize
	113-0130-40	2	.040" Oversize
2	PISTON AND PIN (Includes Retaining Rings)		
	112-0108	2	Standard
	112-0108-05	2	.005" Oversize
	112-0108-10	2	.010" Oversize
	112-0108-20	2	.020" Oversize
	112-0108-30	2	.030" Oversize
	112-0108-40	2	.040" Oversize
3	112-0093	2	Pin, Piston
4	112-0085	4	Ring, Retaining - Piston Pin
5	114-0168	2	Rod Assembly, Connecting (Forged)
6	BEARING HALF, CONNECTING ROD		
	114-0164	4	Standard
	114-0164-02	4	.002" Undersize
	114-0164-10	4	.010" Undersize
	114-0164-20	4	.020" Undersize
	114-0164-30	4	.030" Undersize
7	114-0170	4	Bushing, Piston Pin - Connecting Rod
8	805-0012	4	Bolt, Place - Special



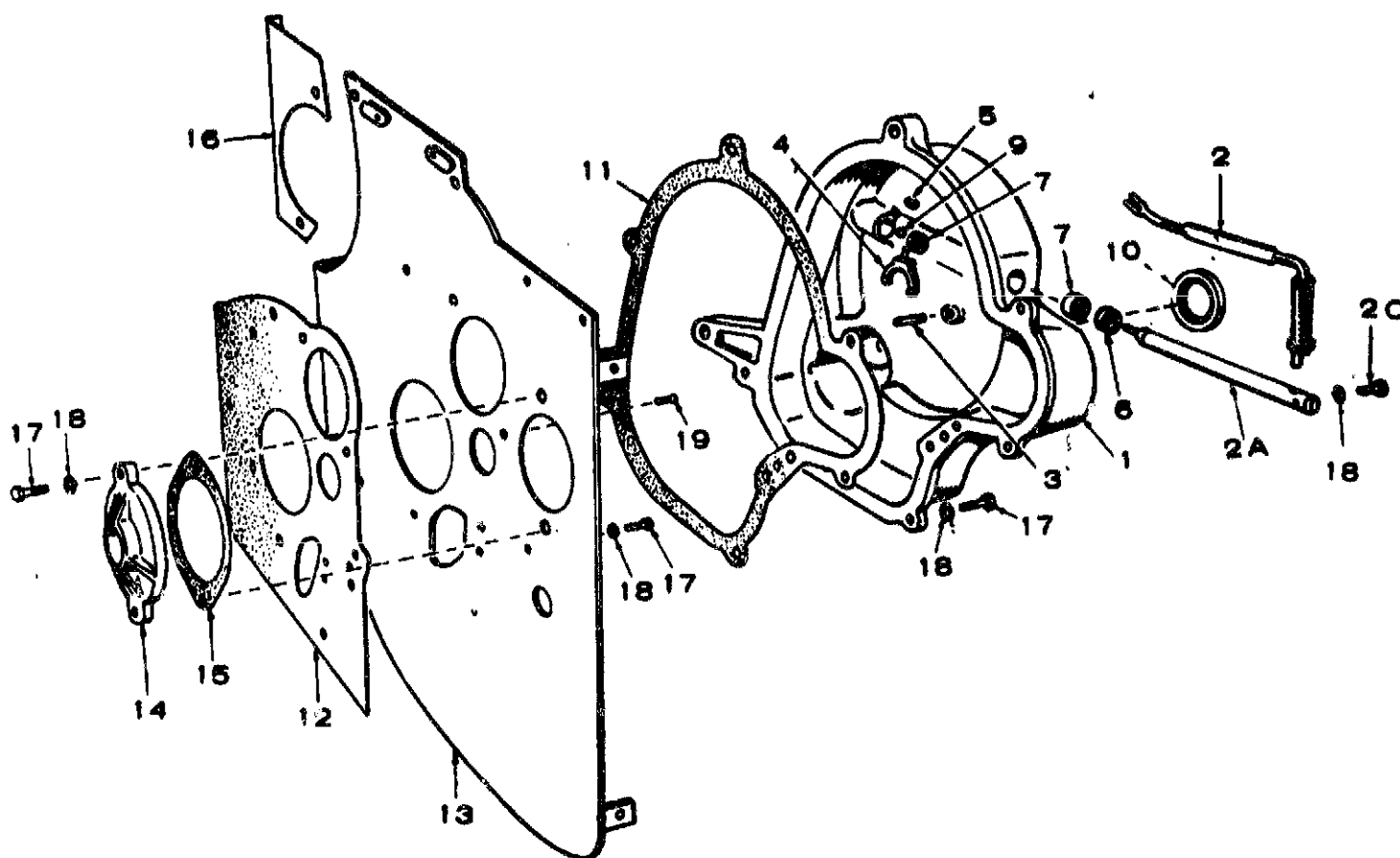
START DISCONNECT AND LOW OIL PRESSURE SWITCH (OPTIONAL)



REF. NO.	PART NO.	QTY. USED	PART DESCRIPTION
1	191-0496	1	Plate, Centrifugal Switch
2	309-0134	1	Switch Assembly, Centrifugal
3	309-0152	1	Plunger
4	160-0382	1	Diaphragm
5	160-0720	1	Spacer, Control Assembly
6	160-0721	1	Gasket, Switch Plate
7	191-0392	1	Cover, Switch Plate
8	191-0388	1	Control Assembly
9	160-0711	2	Spring, Weight
10	160-0806	1	Disc, Thrust Plunger
11	160-0774	1	Plunger

REF. NO.	PART NO.	QTY. USED	PART DESCRIPTION
12	160-0773	1	Spring
13	338-0258	1	Harness, Centrifugal Switch
14	SWITCH, LOW OIL PRESSURE CUT-OFF 309-0177	1	Engines with Factory Mounted Controls (2-Terminals)
	309-0169	1	Engines Without Factory Mounted Controls (1-Terminal)
15	320-0104	1	Relay, Emergency
16	304-0217	1	Resistor, Fixed (1-Ohm, 10-Watt)

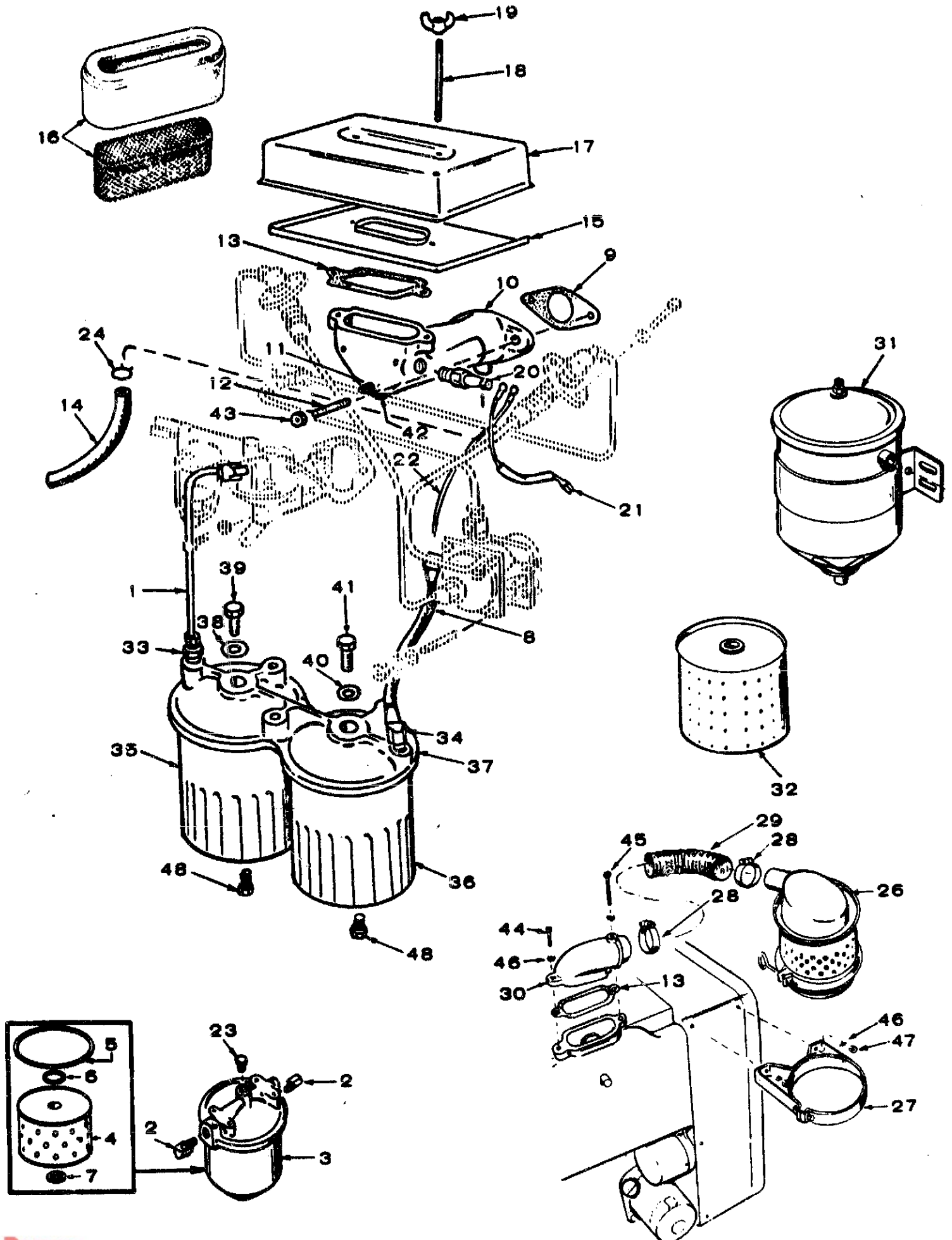
GEAR COVER



REF. NO.	PART NO.	QTY. USED	PART DESCRIPTION
1	COVER ASSEMBLY, GEAR (includes Parts Marked *)		
	103-0277	1	Standard Engine
	103-0366	1	With Optional Flywheel Alternator
2	ARM, GOVERNOR		
	150-0847	1	Standard - Spec P
	150-1096	1	Begin Spec R
	150-1099	1	Variable and Two Speed Governor - Begin Spec R
2A	150-0838	1	*Shaft, Governor
2C	815-0176	1	*Screw, Cap - Hex Head (8-32 x 1/2")
3	516-0111	1	*Pin, Roll - Governor Cup Stop
4	150-0777	1	*Yoke, Governor
5	518-0129	1	*Ring, Yoke
6	509-0088	1	*Seal, Oil
7	*BEARING, NEEDLE		
	510-0048	1	1/2" Governor Shaft
	510-0082	1	1/4" Governor Shaft
9	510-0043	1	*Bearing, Ball - Governor Shaft Thrust (5/16")
10	509-0087	1	*Seal, Oil
11	103-0251	1	Gasket, Gear Cover

REF. NO.	PART NO.	QTY. USED	PART DESCRIPTION
12	103-0218	1	Gasket, Backplate
13	103-0271	1	Backplate, Gear Cover
14	103-0221	1	Cover, Backplate Opening
15	160-0721	1	Gasket, Backplate Opening Cover
16	134-1532	1	Baffle, Backplate
17	SCREW, CAP - HEX HEAD		
	800-0052	2	Backplate Opening Cover Mounting (3/8-16 x 1-1/2")
	800-0026	1	Gear Cover Backplate Mounting (5/16-18 x 3/4")
	800-0028	1	Gear Cover Mounting (5/16-18 x 1")
	800-0030	4	Gear Cover Mounting (5/16-18 x 1-1/4")
18	WASHER, LOCK		
	850-0050	2	Backplate Opening Cover Mounting (3/8")
	850-0045	1	Gear Cover Backplate Mounting (5/16")
	850-0045	5	Gear Cover Mounting (5/16")
	850-0025	1	Governor Shaft (#8)
19	814-0148	2	Screw, Machine - Flat Head (1/4-20 x 1/2")

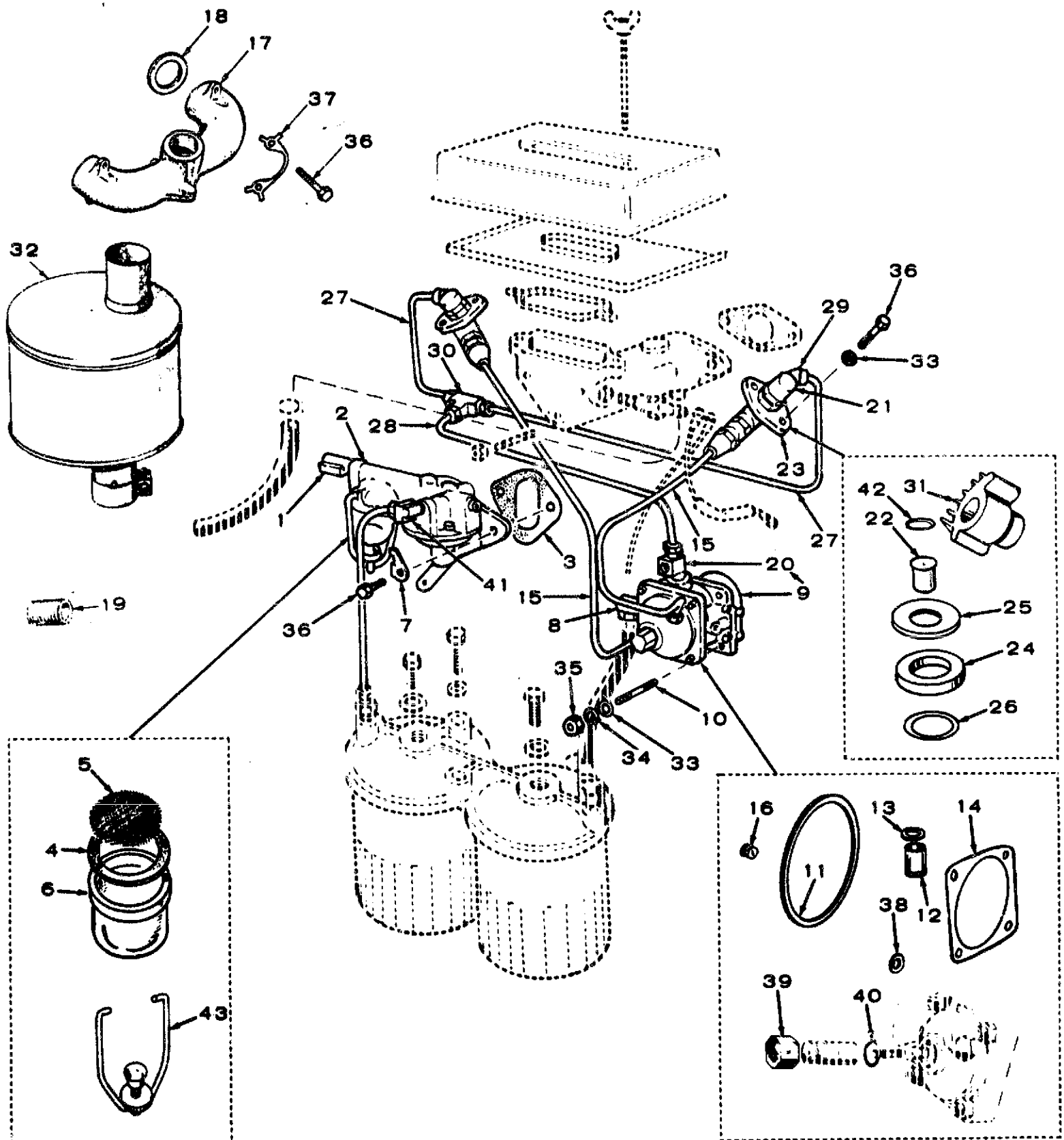
AIR CLEANER AND FUEL FILTERS



AIR CLEANER AND FUEL FILTER

REF. NO.	PART NO.	QTY. USED	PART DESCRIPTION	REF. NO.	PART NO.	QTY. USED	PART DESCRIPTION
1	LINE, FUEL PUMP TO SECONDARY FILTER			23	149-0789	1	Plug, Air Bleed, Secondary Filter
	149-0806	1	Specs P and R	24	503-0170	2	Clamp, Breather Hose
	149-1190	1	Begin Spec S	28	140-0500	1	Cleaner, Air, Oil Bath (Optional)
2	502-0041	2	Elbow, Inverted Male - Secondary Filter Inlet and Outlet - Specs P and R	27	140-0519	1	Band, Air Cleaner (Optional)
3	149-0408	1	Filter, Secondary Fuel (Includes Cartridge) - Specs P and R	28	503-0365	2	Clamp, Air Cleaner to Adapter (Optional)
4	149-0428	1	Cartridge, Secondary Fuel Filter - Specs P and R	29	503-0444	1	Hose, Air Cleaner to Adapter (Optional)
5	149-0456	1	Gasket, Secondary Filter, Bowl to Cover - Specs P and R	30	140-0645	1	Adapter, Oil Bath Air Cleaner (Optional)
6	149-0455	1	Gasket, Secondary Filter Cartridge to Head - Specs P and R	31	149-1078	1	Filter, Fuel - Mounted between Fuel Tank and Transfer Pump
7	149-0493	1	Gasket, Secondary Filter Cartridge to Retainer - Specs P and R	32	149-0848	1	Cartridge, For 149-1078 Filter
8	LINE, FUEL SECONDARY FILTER TO INJECTION PUMP			33	502-0003	1	Connector, Primary Fuel Filter Inlet - Begin Spec S
	501-0091	1	Specs P and R	34	502-0099	1	Elbow, Reducer - Secondary Fuel Filter Outlet - Begin Spec S
	501-0129	1	Begin Spec S	35	122-0325	1	Filter, Fuel - Primary - Begin Spec S
9	141-0281	1	Gasket, Air Cleaner Adapter to Cylinder Head	36	122-0326	1	Filter, Fuel - Secondary - Begin Spec S
10	140-0576	1	Adapter, Air Cleaner	37	149-1185	1	Adapter, Fuel Filters - Begin Spec S
11	505-0054	1	Plug, Pipe - Air Cleaner Adapter and Intake Manifold (1/4") - Used on some early models)	38	526-0068	1	Washer, Primary Fuel Filter Mounting - Begin Spec S
12	520-0011	2	Stud, Air Cleaner Adapter Mounting	39	801-0074	1	Screw, Cap - Hex Head (7/16-20 x 1-3/4")
13	140-0584	1	Gasket, Air Cleaner	40	526-0066	1	Washer, Secondary Fuel Filter Mounting - Begin Spec S
14	HOSE, BREATHER			41	801-0053	1	Screw, Cap - Hex Head (3/8-24 x 1-3/4")
	503-0462	1	Spec P through T	42	517-0067	1	Plug, Breather Hole in Adapter - Begin Spec V
	503-0600	1	Begin Spec V	43	870-0137	2	Nut, Hex - Air Cleaner Adapter Mounting (5/16-24)
15	140-0595	1	Pan, Air Cleaner	44	800-0007	1	Screw, Cap - Hex Head (1/4-20 x 1")
16	140-0636	1	Element and Retainer, Air Cleaner	45	800-0015	1	Screw, Cap - Hex Head (1/4-20 x 3")
17	140-0594	1	Cover, Air Cleaner	46	850-0040	4	Washer, Lock - Spring (1/4")
18	520-0621	2	Stud, Air Cleaner	47	860-0013	2	Nut, Hex (1/4-20)
19	865-0020	2	Nut, Self Locking - Air Cleaner (1/4-20)	48	502-0080	2	Plug, Drain - Fuel Filter
20	154-0712	1	Heater, Manifold (Includes Gasket)				
21	LEAD, GLOW PLUG TO AIR HEATER						
	336-1504	1	#1-Cylinder (12-1/4")				
	336-1505	1	#2-Cylinder (5-1/4")				
22	336-1346	1	Lead, Air Heater to Solenoid in Control				

FUEL PUMP, INJECTION SYSTEM AND EXHAUST

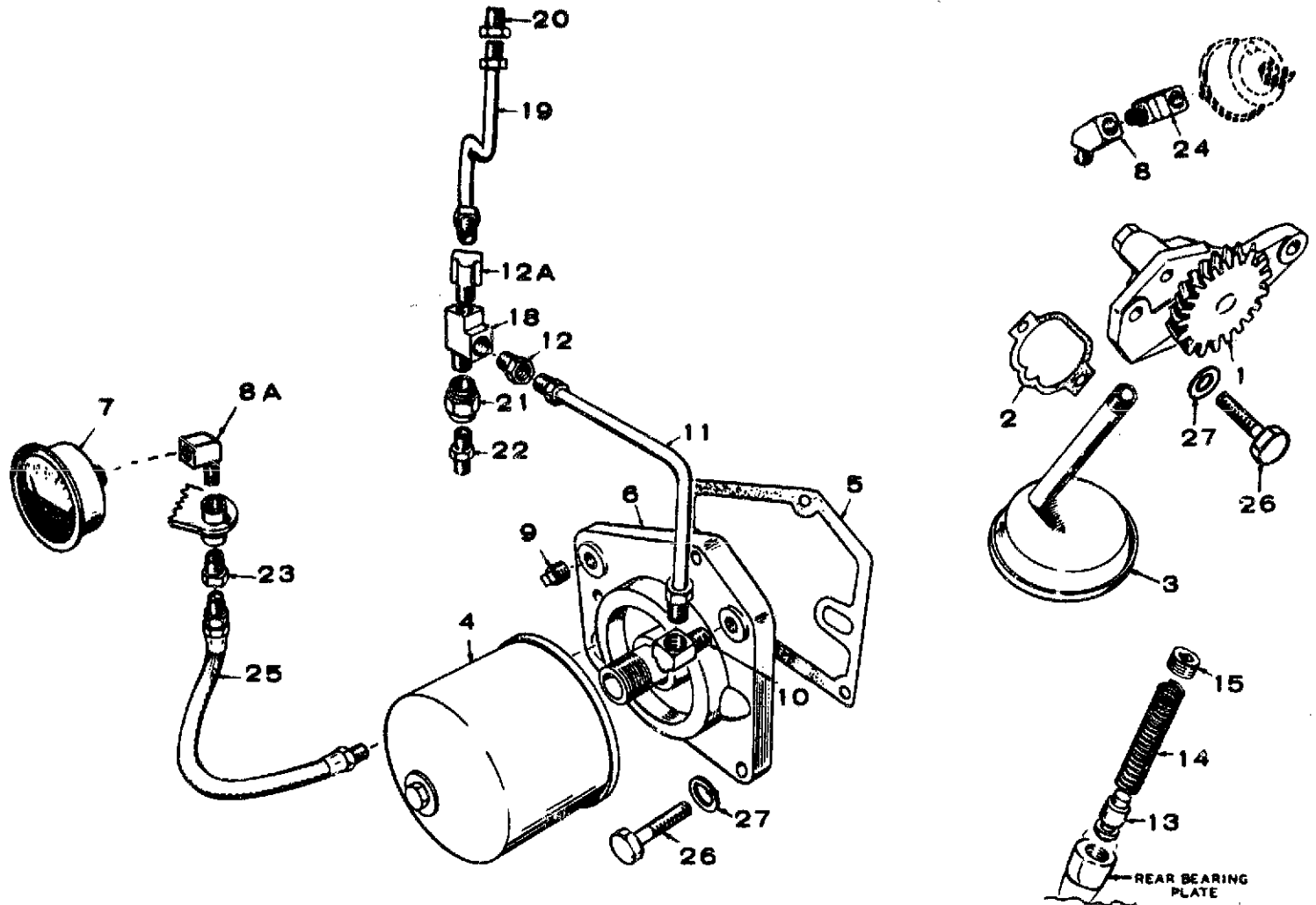


FUEL PUMP, INJECTION SYSTEM AND EXHAUST

REF. NO.	PART NO.	QTY. USED	PART DESCRIPTION	REF. NO.	PART NO.	QTY. USED	PART DESCRIPTION
	149-1046	1	Repair Kit, Fuel Pump (Includes Diaphragm and Gaskets)	17	154-0033	1	Manifold, Exhaust
1	502-0002	2	Elbow, Inverted Male - Fuel Pump Inlet	18	154-0463	2	Gasket, Exhaust Manifold
2	149-1020	1	Pump, Fuel Transfer	19	505-0177	1	Nipple, Exhaust (Optional)
3	149-0792	1	Gasket, Fuel Transfer Pump Mounting	20	147-0183	1	Valve, Bleeder - Injection Pump
4	149-0517	1	Gasket, Fuel Pump Bowl	21	147-0136	2	Nozzle and Holder Assembly
5	149-0463	1	Screen, Fuel Pump Filter	22	147-0134	2	Nozzle Only (Component of Nozzle and Holder Assembly)
6	+BOWL, FUEL PUMP SEDIMENT			23	147-0141	2	Flange, Injection Nozzle Hold-down
	149-0116	1	2-3/8" Long	24	147-0044	2	Shield, Nozzle Heat
	149-1168	1	1-5/8" Long	25	147-0043	2	Gasket, Nozzle Heat Shield (Asbestos)
7	149-1307	2	Washer, Flange - Fuel Pump Mounting	26	110-0419	2	Gasket, Shield to Head (Copper)
8	ELBOW, INJECTION PUMP INLET			27	LINE, NOZZLE FUEL RETURN		
	502-0054	1	Specs P and R		149-1056	1	No. 1 Cylinder (14-3/8")
	502-0039	1	Begin Spec S		149-1057	1	No. 2 Cylinder (10-1/8")
9	PUMP, FUEL INJECTION (Includes Ball Joint)			28	149-1058	1	Line, Injection Pump to Fuel Return Lines Tee
	147-0227	1	Spec P (Includes Buttons 2,4,11,12 and Parts Marked *)	29	502-0065	2	Elbow, Inverted - Nozzle Fuel Return Line (45°)
	147-0226	1	Begin Spec R (Includes Buttons 2,4,7,9,11,12)	30	502-0102	1	Tee, Return Lines
10	520-0129	4	Stud, Injection Pump Mounting	31	ADAPTER, INJECTION NOZZLE		
11	509-0094	1	Seal, O-Ring - Injection Pump to Crankcase		147-0133	1	No. 1 Cylinder
12	147-0182	1	Tappet, Injection Pump		147-0132	1	No. 2 Cylinder
13	147-0196	1	Gasket, O-Ring - Injection Pump Tappet	32	155-0824	1	Muffler, Exhaust (Optional)
14	147-0145	1	Shim Kit, Injection Pump Mounting	33	WASHER, FLAT		
15	LINE, INJECTION PUMP TO NOZZLE				526-0122	4	Nozzle and Holder Mounting
	149-0961	1	No. 1 Cylinder - Spec P		526-0022	4	Injection Pump Mounting
	149-1090	1	No. 2 Cylinder - Spec P	34	850-0045	4	Lockwashers, Injection Pump Mounting (5/16")
	149-1101	1	*No. 1 Cylinder - Begin Spec R	35	862-0015	4	Nut, Injection Pump Mounting (5/16-18)
	149-1118	1	*No. 2 Cylinder - Begin Spec R	36	SCREW, HEX CAP		
16	BUTTON, INJECTION PUMP PLUNGER				800-0508	4	Nozzle and Holder Mounting (5/16-18 x 2-3/4")
	147-0147	1	.119 - Marked 1 or A		800-0027	2	Transfer Pump Mounting (5/16-18 x 7/8")
	147-0148	1	.116 - Marked 2 or B		114-0022	4	Exhaust Manifold Mounting
	147-0149	1	.113 - Marked 3 or C	37	154-1665	2	Tab, Lock - Exhaust Manifold
	147-0150	1	.110 - Marked 4 or D	38	147-0259	1	Ring, Retainer - Timing Button
	147-0151	1	.107 - Marked 5 or E	39	147-0253	1	Cap, Delivery Valve
	147-0161	1	.104 - Standard, 11 or No Mark	40	147-0254	1	Gasket, Delivery Valve Cap
	147-0152	1	.101 - Marked 6 or F	41	502-0065	1	Elbow, Inverted - Fuel Pump Outlet
	147-0153	1	.098 - Marked 7 or H	42	147-0243	2	Gasket, Nozzle
	147-0154	1	.095 - Marked 8 or J	43	+BAIL, FUEL PUMP SEDIMENT BOWL		
	147-0155	1	.092 - Marked 9 or K		149-1006	1	3-5/8" Long
	147-0156	1	.089 - Marked 10 or L		149-1169	1	2-7/8" Long
	147-0190	1	.122 - Marked 12 or M				
	147-0189	1	.125 - Marked 13 or N				
	147-0188	1	.126 - Marked 14 or P				
	147-0187	1	.131 - Marked 15 or R				
	147-0186	1	.134 - Marked 16 or S				

* - Measure for correct length.

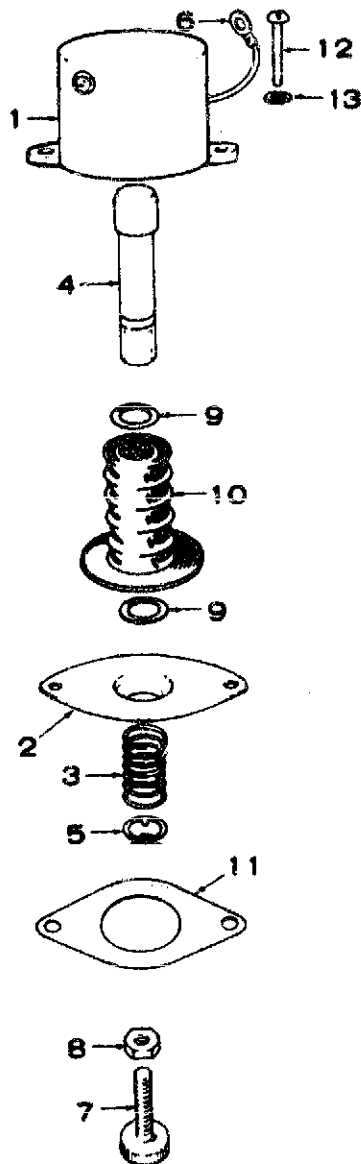
OIL SYSTEM



REF. NO.	PART NO.	QTY. USED	PART DESCRIPTION
1	120-0547	1	Pump Assembly, Oil
2	120-0580	1	Gasket Kit, Pump
3	120-0551	1	Cup, Oil Intake
4	122-0185	1	Filter, 3-1/2" Long (Standard)
4	122-0193	1	Filter, 5-1/2" Long (Optional)
5	122-0188	1	Gasket, Adapter
6	122-0182	1	Adapter, Oil Filter
7	193-0008	1	Gauge, Oil Pressure
8	502-0053	1	Elbow, Street - Oil Gauge Mounting (45°) - Specs P and R, Also (1) Optional Low Oil Pressure Switch Mounting
8A	502-0020	1	Elbow, Street - Oil Gauge Mounting (90°) - Begin Spec S
9	505-0057	1	Plug, Pipe (1/8")
10	502-0037	1	Elbow, Inverted Male - Oil Line to Filter Adapter
11	120-0814	1	Line, Adapter to Injection Pump Tee
12	CONNECTOR, INVERTED MALE, INJECTION PUMP LUBRICATION TEE		
	502-0097	2	Spec P
	502-0274	1	Begin Spec R
12A	502-0037	1	Elbow, injection Pump Lubrication Tee - Begin Spec R
13	120-0539	1	Valve, Oil By-Pass

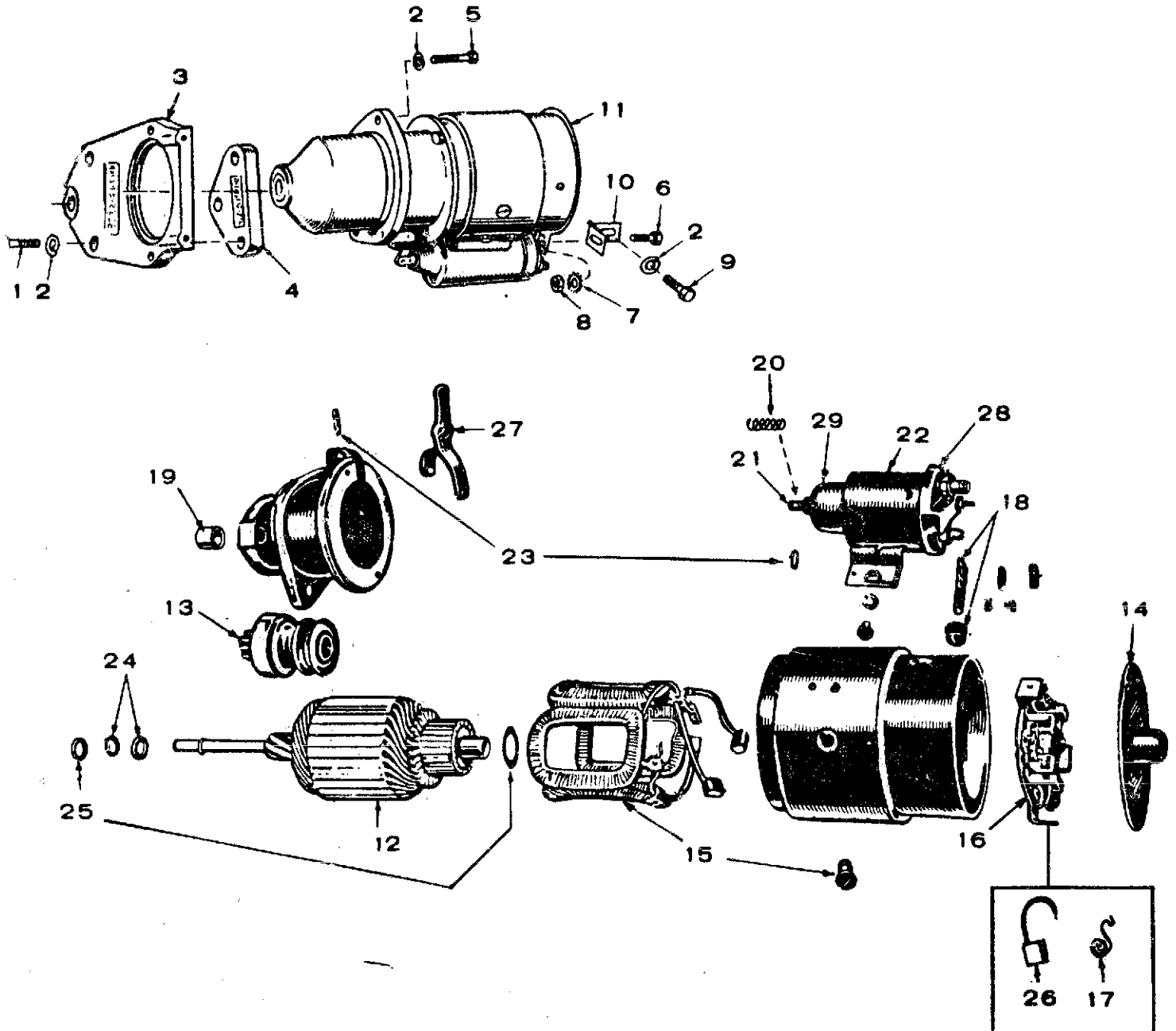
REF. NO.	PART NO.	QTY. USED	PART DESCRIPTION
14	120-0555	1	Spring, By-Pass Valve
15	505-0274	1	Plug, Pipe (1/8")
18	502-0242	1	Tee, Injection Pump Lubrication (Restricted)
19	120-0633	1	Line, Oil - Injection Pump Tee to Cylinder Head
20	CONNECTOR, RESTRICTED - OIL LINE TO CYLINDER HEAD		
	502-0274	1	Spec P
	502-0281	1	Begin Spec R
21	502-0051	1	Coupling, Tee to Injection Pump - Begin Spec P
22	502-0082	1	Nipple, Tee to Injection Pump - Begin Spec P
23	502-0003	1	Connector, Oil Fill Bracket to Oil Line - Begin Spec S
24	502-0058	1	Tee, Oil Fill Bracket to Gauge and Switch - Begin Spec S (Optional)
25	501-0003	1	Line, Oil - Begin Spec S
26	SCREW, HEX CAP		
	800-0028	3	Oil Filter Adapter Mounting (5/16-18 x 1")
	800-0030	2	Oil Pump Mounting (5/16-18 x 1-1/4")
27	WASHER, LOCK - SPRING		
	850-0045	3	Oil Filter Adapter Mounting (5/16")
	850-0045	2	Oil Pump Mounting (5/16")

STOP SOLENOID



REF. NO.	PART NO.	QTY. USED	PART DESCRIPTION
1	307-0628	1	Solenoid, Stopping
2	306-0162	1	Retainer, Plunger
3	306-0161	1	Spring, Plunger
4	306-0159	1	Plunger
5	518-0203	1	Ring, Snap - Spring Retaining
6	336-0706	1	Lead, Solenoid Ground
7	306-0242	1	Screw, Solenoid Adjusting
8	862-0001	1	Nut, Hex (1/4-20)
9	518-0218	2	Ring, Retaining - Spec P
10	306-0193	1	Cover, Solenoid Plunger - Spec P
11	150-0963	1	Gasket, Solenoid Mounting - Spec P and R
12	812-0148	2	Screw, Machine - Round Head (1/4-20 x 1/2")
13	850-0040	2	Washer, Lock - Spring (1/4")

STARTER

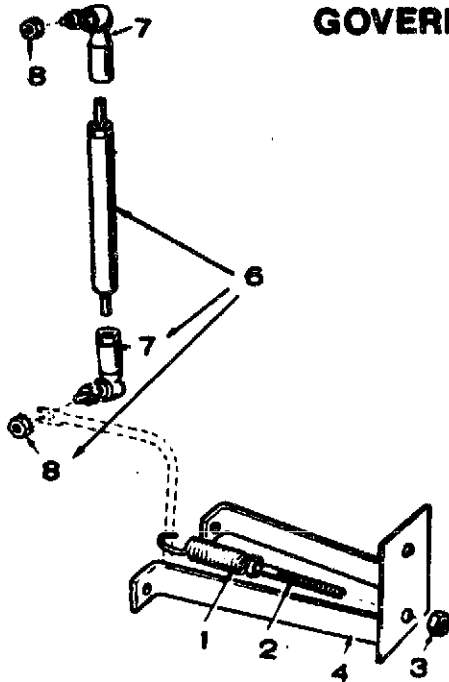


REF. NO.	PART NO.	QTY. USED	PART DESCRIPTION	REF. NO.	PART NO.	QTY. USED	PART DESCRIPTION
1	800-0054	3	Screw, Cap - Hex Head (3/8-16 x 2")	15	191-1024	1	Coil Package, Field
2	850-0050	7	Washer, Lock - Spring (3/8")	16	191-1025	1	Plate Assembly, Brush
3	191-0512	1	Flange, Mounting	17	191-1020	1	Spring Set, Brush (Set of 4)
4	191-0311	1	Spacer, Flange	18	191-1026	1	Connector Package
5	800-0051	2	Screw, Cap - Hex Head (3/8-16 x 1-1/4")	19	191-0497	1	Bearing, Drive End
6	800-0046	1	Screw, Cap - Hex Head (3/8-16 x 1/2")	20	191-1027	1	Spring, Plunger
7	856-0010	1	Washer, Lock - EIT (3/8")	21	191-1028	1	Core Assembly, Moving
8	864-0003	1	Nut, Hex (3/8-16)	22	191-0433	1	Switch, Solenoid (Includes Cover and Boot)
9	800-0052	2	Screw, Cap - Hex Head (3/8-16 x 1-1/2")	23	191-1029	1	Yoke Parts Package
10	191-0365	1	Bracket, Support	24	191-1030	1	Stop & Lock Ring Package
11	191-0324	1	Starter				Pinion
12	191-0712	1	Armature	25	191-1031	1	Thrust Washer Package, Armature
13	191-0432	1	Clutch	26	191-0434	1	Brush Set
14	191-1023	1	Head Assembly (Commutator End)	27	191-1032	1	Yoke
				28	191-0468	1	Cover, Solenoid
				29	191-1134	1	Boot Rubber, Solenoid

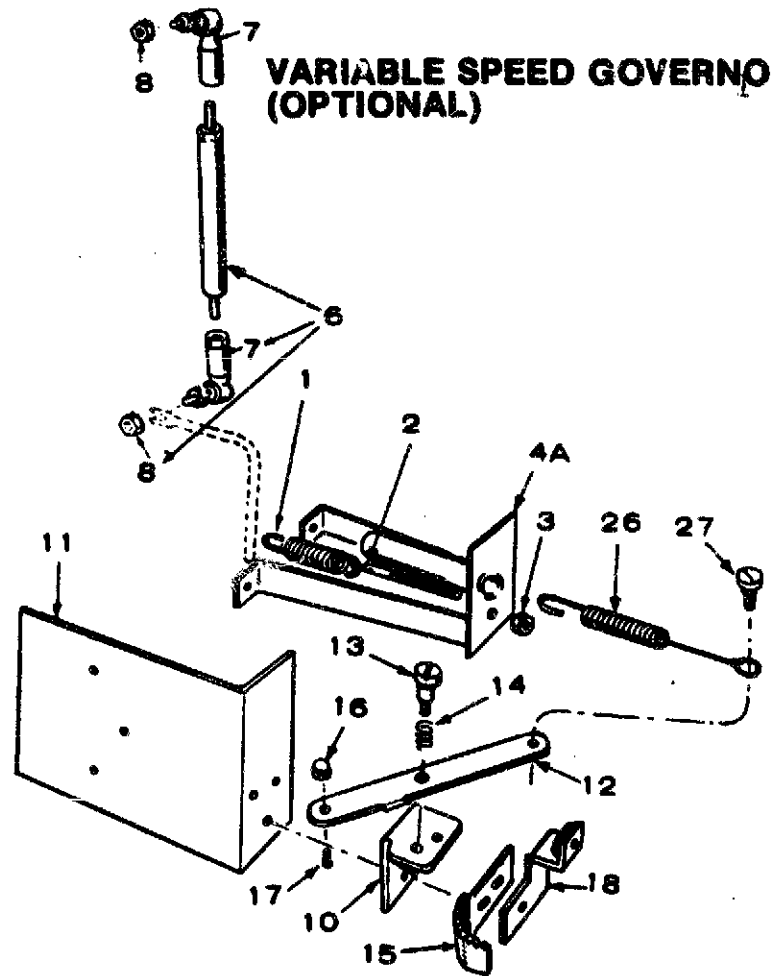
Redistribution or publication of this document by any means, is strictly prohibited.

GOVERNOR AND THROTTLE CONTROL

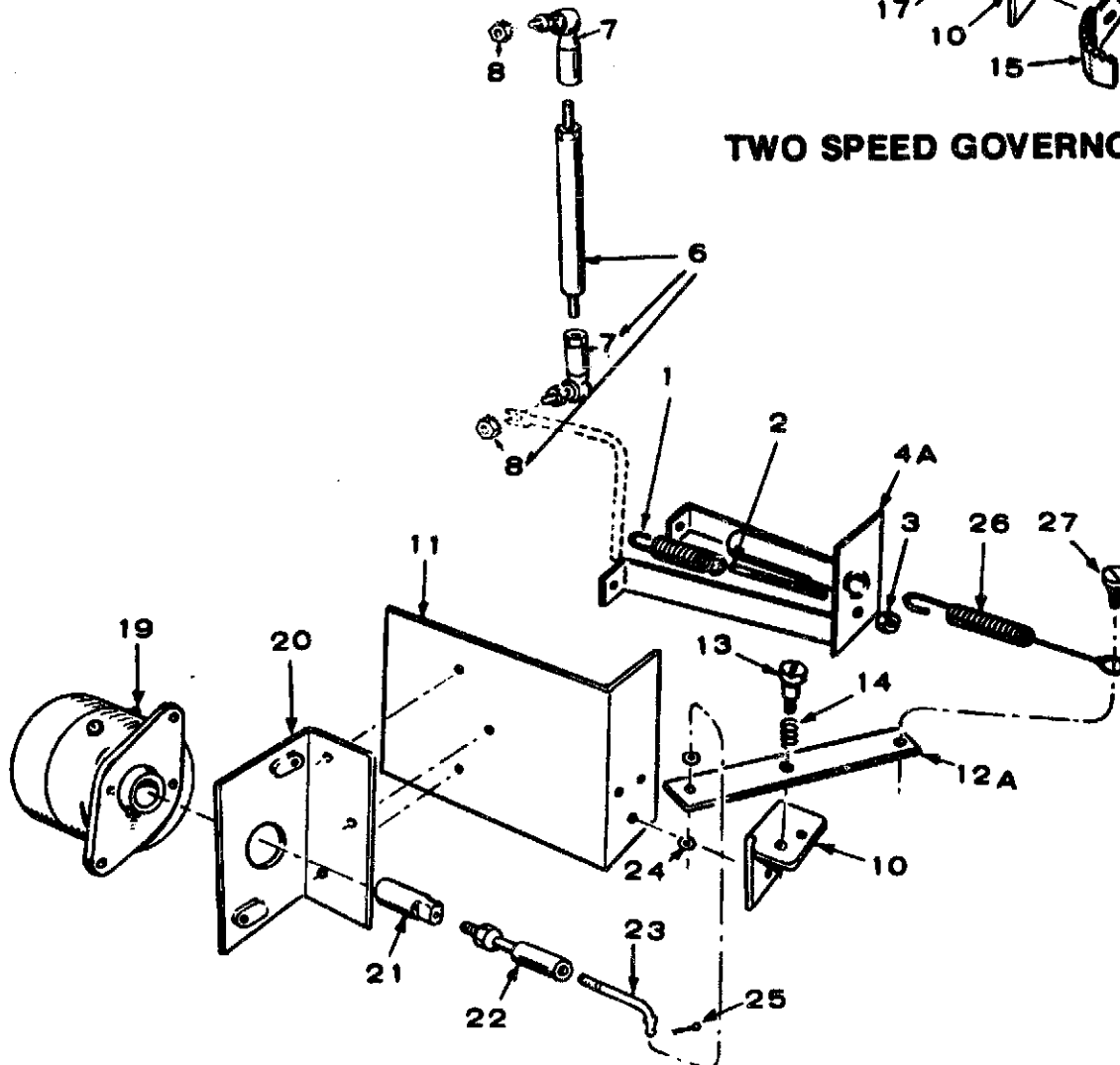
CONSTANT SPEED GOVERNOR



VARIABLE SPEED GOVERNOR (OPTIONAL)



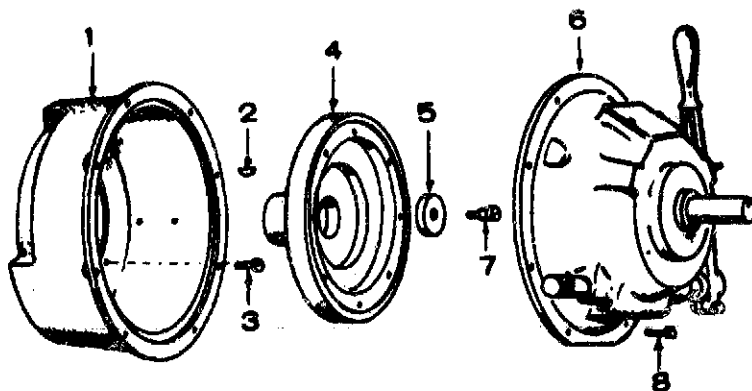
TWO SPEED GOVERNOR (OPTIONAL)



GOVERNOR

REF. NO.	PART NO.	QTY. USED	PART DESCRIPTION	REF. NO.	PART NO.	QTY. USED	PART DESCRIPTION
1	SPRING, GOVERNOR 150-0846	1	Spec P	14	150-0907	1	Spring, Speed Control Lever, Tension - Variable Speed and Two Speed Governor (Optional)
	150-1084	1	Begin Spec R	15	150-0914	1	Ratchet, Speed Control - Variable Speed Governor with Manual Control at Engine (Optional)
2	STUD, GOVERNOR ADJUSTING 150-0822	1	Spec P	16	153-0014	1	Nut, Cable - Variable Speed Governor with Cable Control (Optional)
	150-1083	1	Begin Spec R	17	810-0074	1	Screw, Cable - Variable Speed Governor with Cable Control (Optional)
3	NUT, GOVERNOR ADJUSTING 104-0091	1	Spec P	18	150-0978	1	Bracket, Stop - Variable Speed Governor (Optional)
	862-0003	1	Begin Spec R	19	307-0628	1	Solenoid, Governor Control - Two Speed Governor (Optional)
	BRACKET ASSEMBLY 150-0814	1	Constant Speed Governor - Spec P	20	150-0906	1	Bracket, Solenoid Mounting - Two Speed Governor (Optional)
4	150-1110	1	Constant Speed Governor - Begin Spec R	21	150-0905	1	Plunger, Solenoid - Two Speed Governor (Optional)
4A	150-0913	1	Variable and Two Speed Governor (Optional) - Spec P	22	150-0925	1	Joint, Ball - Two Speed Governor (Optional)
4A	150-1111	1	Variable and Two Speed Governor (Optional) - Begin Spec R	23	150-0923	1	Rod, Solenoid to Lever
6	LINKAGE ASSEMBLY, GOVERNOR TO INJECTION PUMP (Includes One Ball Joint) 152-0831	1	Spec P	24	526-0116	1	Washer, Solenoid Rod
	150-1132	1	Begin Spec R	25	516-0036	1	Key, Cotter (1/16 x 3/8") - Solenoid Rod - Two Speed Governor (Optional)
7	JOINT, BALL 150-0974	2	Spec P	26	SPRING, GOVERNOR CONTROL - TWO SPEED and VARIABLE SPEED GOVERNOR (Optional) 150-0922	1	Speed Range (200 to 1,800 RPM (1-5/16" Coil)
	150-0939	2	Begin Spec R		150-0921	1	Speed Range 1,200 to 2,400 RPM (1-13/32")
8	870-0131	2	Nut, Keps, Ball Joint to Governor Arm	27	150-0918	1	Screw, Spring to Lever - Variable Speed and Two Speed Governor (Optional)
10	150-0916	1	Bracket, Control Arm - Variable Speed and Two Speed Governor (Optional)				
11	150-0917	1	Bracket, Governor Control Mounting - Variable Speed and Two Speed Governor (Optional)				
12	150-0908	1	Lever, Speed Control - Variable Speed Governor (Optional)				
12A	150-0904	1	Lever, Solenoid Control - Two Speed Governor (Optional)				
13	150-0915	1	Screw, Speed Control Lever and Spring Mounting - Variable Speed and Two Speed Governor (Optional)				

CLUTCH (OPTIONAL)

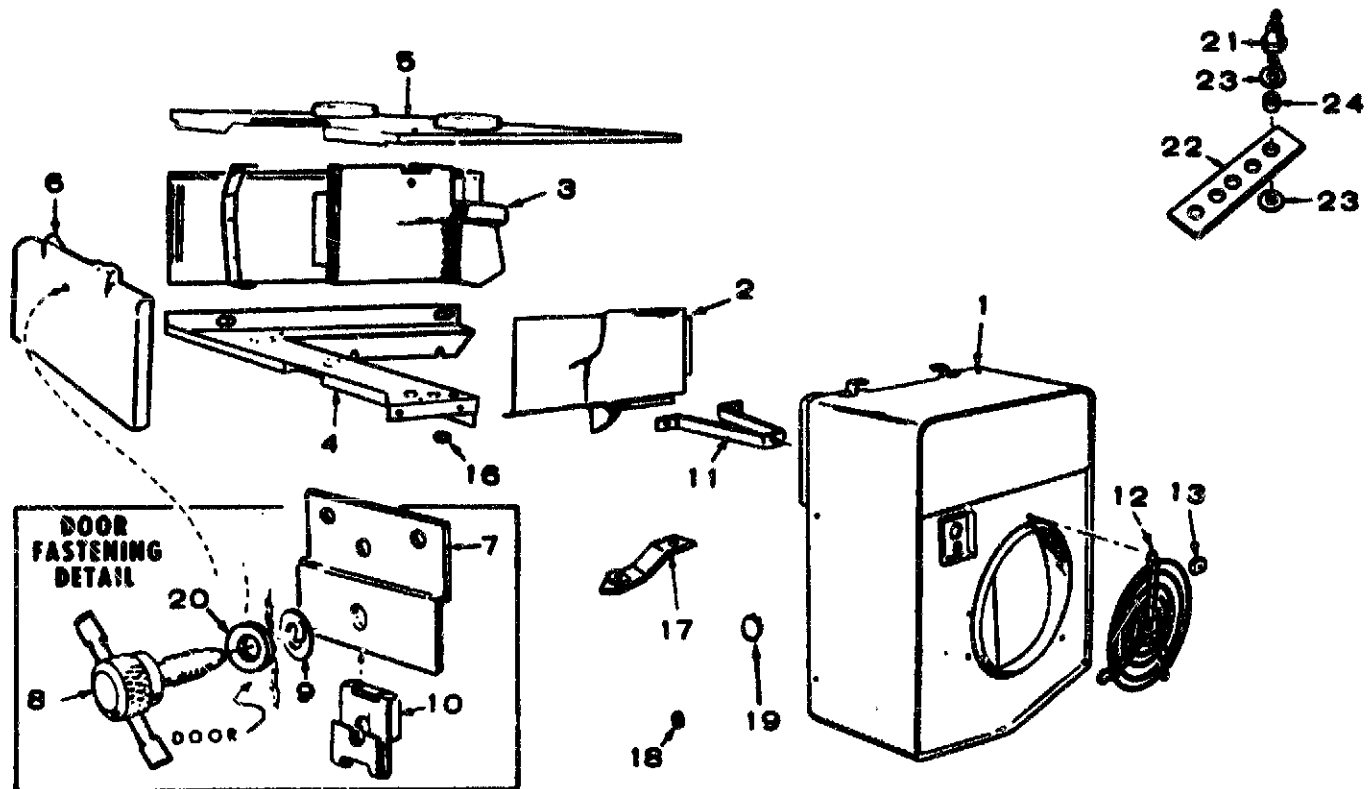


REF. NO.	PART NO.	QTY. USED	PART DESCRIPTION
1	190-0251	1	Housing, Clutch
2	515-0006	1	Key, Clutch
3	805-0019	4	Bolt, Place (3/8-16 x 1-1/4")
4	FLANGE, CLUTCH ADAPTER 190-0252	1	Rockford Clutch
	190-0253	1	Twin Disc Clutch
5	190-0254	1	Washer, Flat
6	CLUTCH 190-0258	1	*Rockford
	190-0325	1	**Twin Disc
7	150-0918	1	Screw, Flange
8	110-0879	8	Screw, Cap - Hex Head

* - For Components, contact your nearest Rockford Clutch dealer. Borg Warner Corporation
Rockford, Illinois 61100

** - For Components, contact your nearest Twin Disc Clutch dealer. Racine, Wisconsin 53403

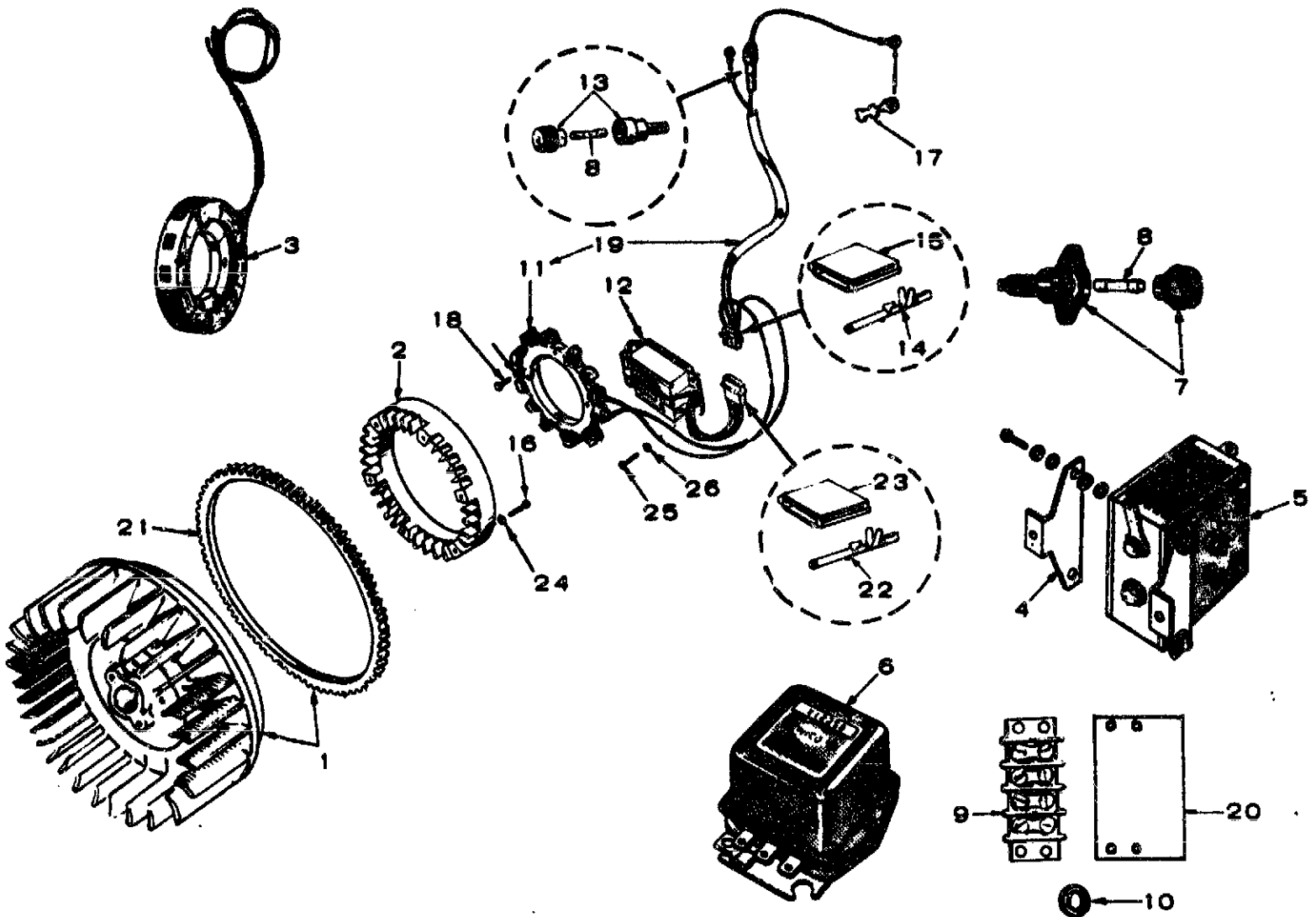
AIR HOUSING



REF. NO.	PART NO.	QTY. USED	PART DESCRIPTION
1	134-1087	1	Housing, Blower
2	134-1048	1	Housing, Cylinder Air - Front
3	HOUSING, CYLINDER AIR - REAR		
	134-1051	1	Standard
	134-1058	1	With Optional Factory Mounted Controls - Spec P through T
	134-2256	1	With Optional Factory Mounted Controls - Begin Spec V
4	134-1419	1	Pan, Cylinder Air Housing (Bottom)
5	COVER, NOZZLE and HOUSING		
	134-1125	1	Spec P through T
	134-2425	1	Begin Spec V
6	134-1039	1	Panel, Air Housing Door
7	134-1554	1	Bracket, Air Housing Door
8	134-1179	4	Screw, Top Cover (Use Hex Cap Screw)
8	134-1373	1	Screw, Door Panel
9	134-1180	1	Washer, Screw Retainer - Door Panel (Also 8 Used on Cover on Earlier Models)

REF. NO.	PART NO.	QTY. USED	PART DESCRIPTION
10	870-0194	5	Nut, Tinneman - Door Panel and Cover
11	134-1088	1	Support, Blower Housing and Grille
12	134-1178	1	Grille and Plate
13	134-1092	3	Retainer, Grille
16	508-0085	2	Grommet, Rubber - Housing (9/16" Hole)
17	BRACKET, BLOWER HOUSING AND CYLINDER SHROUD		
	134-1703	1	Front
	134-1704	1	Rear
18	508-0109	1	Grommet, Rubber - Housing Cover (1" Hole)
19	517-0108	2	Plug, Dot Button - Blower Housing and Grille (1-1/8" Hole)
20	526-0016	1	Washer, Flat - Door Panel Screw
21	309-0196	1	Switch, High Air Temperature
22	309-0195	1	Bracket, High Air Temperature Switch
23	503-0126	2	Washer, Insulating
24	508-0127	1	Sleeve, Insulating

FLYWHEEL ALTERNATOR - 12 VOLT (WICO) (OPTIONAL)

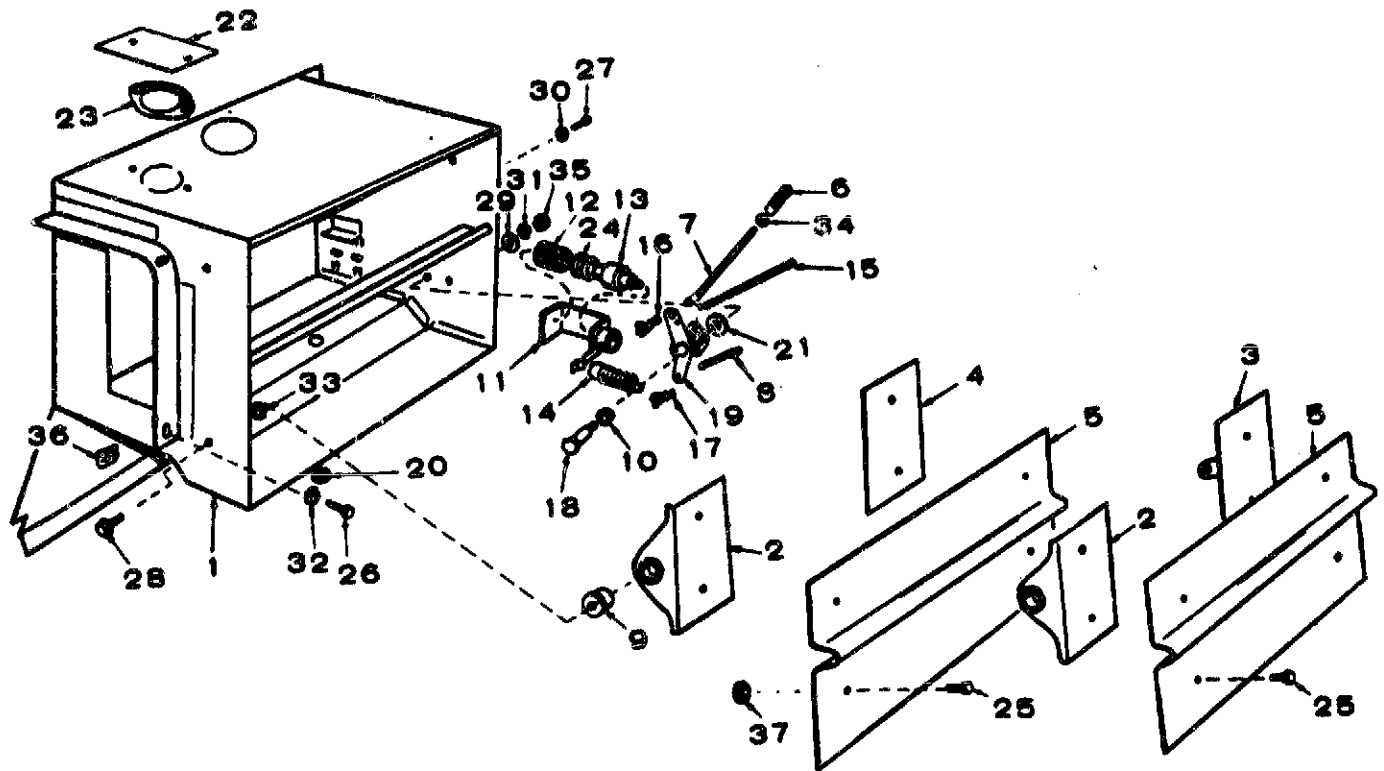


REF. NO.	PART NO.	QTY. USED	PART DESCRIPTION
1	FLYWHEEL (INCLUDING RING GEAR) - Also Listed in Crankshaft & Flywheel Group		
	191-0408	1	Spec P and Begin Spec T
	134-1477	1	Includes Hub Assembly - Specs R and S
2	181-0400	1	Rotor
3	191-0509	1	Stator - Spec P through T
4	305-0262	2	Bracket, Rectifier Mounting
5	305-0267	1	Rectifier Assembly (Includes Mounting Brackets)
6	305-0261	1	Regulator, Voltage (12 Volt, 2-Step) - Spec P through T
7	321-0103	1	Holder, Fuse - Spec P through T
8	FUSE		
	321-0128	1	Spec P through T (20 Amp)
	321-0182	1	Begin Spec V (30 Amp)
9	332-0537	1	Block, Terminal (4 Place)
10	508-0071	1	Grommet, Rubber
11	191-0724	1	*Stator - Begin Spec V
12	305-0478	1	Regulator, Voltage - Begin Spec V
13	321-0185	1	*Holder, Fuse - Begin Spec V
14	323-0488	4	*Socket, Connector - Begin Spec V

REF. NO.	PART NO.	QTY. USED	PART DESCRIPTION
15	323-0759	1	*Connector, Socket Housing - Begin Spec V
16	812-0133	6	Screw, Machine - Round Head (#12-24 x 1-1/2")
17	332-0325	2	*Terminal, Crimp (Eyelet) Begin Spec V
18	813-0107	4	Screw, Machine - Round Head (#10-32 x 1-1/4")
19	191-0877	1	Stator Assembly (Includes Parts Marked *)
20	332-0872	1	Strip, Marker - Spec P Through T
21	104-0423	1	Gear, Ring - Flywheel
22	323-0498	1	Pin, Connector (Male) Begin Spec V
23	323-0763	1	Connector, Socket Housing Begin Spec V
24	850-0035	6	Washer, Lock - Spring (#12)
25	800-0006	3	Screw, Cap - Hex Head (1/4-20 x 7/8")
26	850-0040	3	Washer, Lock - Spring (1/4")

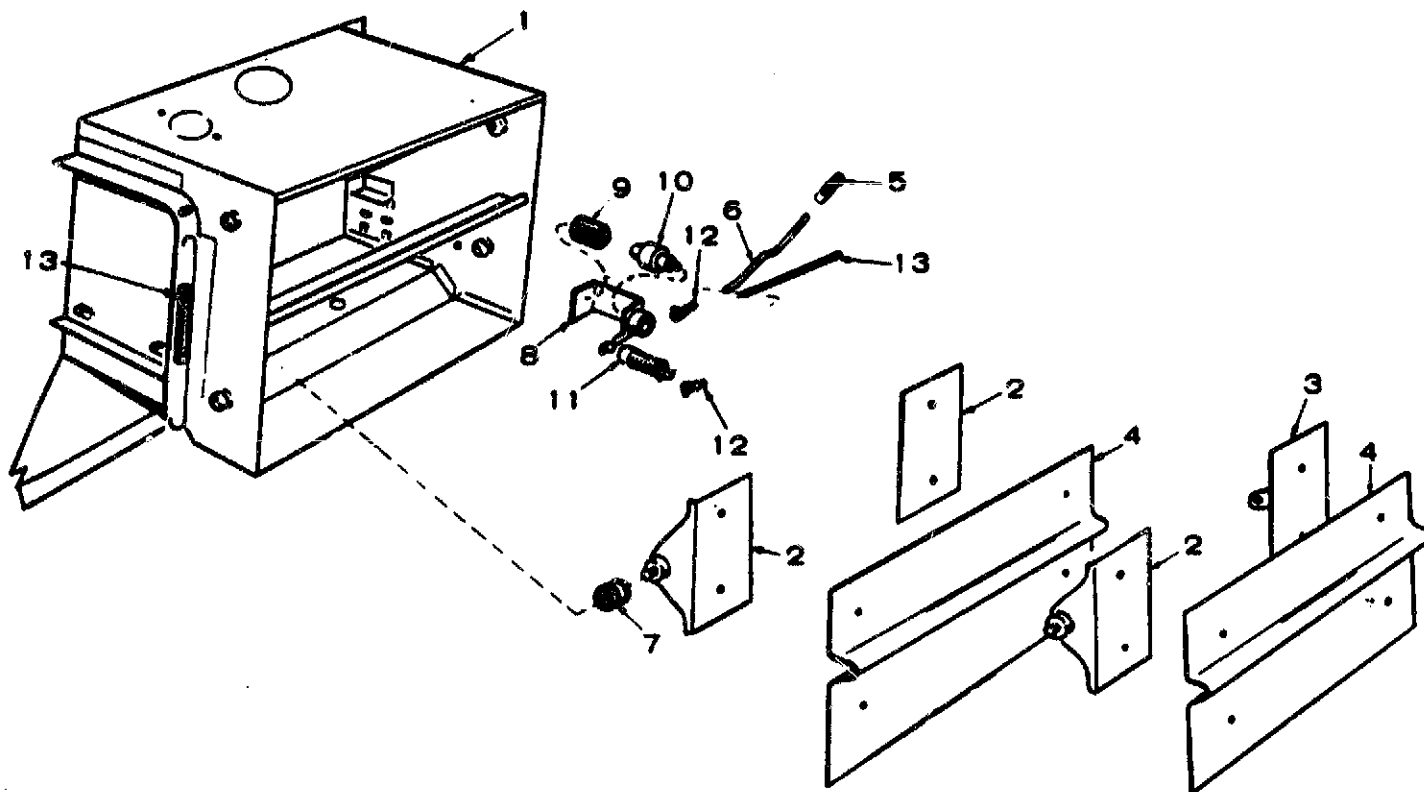
* - Parts included in 191-0877 Stator Assembly

AIR SHUTTER DISCHARGE (INTERNAL SPRINGS) - OPTIONAL



REF. NO.	PART NO.	QTY. USED	PART DESCRIPTION	REF. NO.	PART NO.	QTY. USED	PART DESCRIPTION
	134-1811	1	Shutter Assembly, Complete (Internal Springs)	20	508-0002	1	Grommet, Rubber
1	134-1804	1	Duct only, Air Outlet	21	526-0213	1	Washer, Actuating Shaft
2	134-2411	2	Bracket and Pivot, Shutter	22	134-1375	1	Plate, Exhaust Outlet Cover
3	134-1802	1	Bracket and Pivot, Shutter and Rod	23	154-0738	1	Gasket, Exhaust Outlet
4	134-1801	1	Bracket and Pivot, Shutter and Spring	24	526-0175	2	Washer, Flat (41/64" ID x 29/32" OD x 1/16" Thk)
5	134-1807	2	Shutter, Air Outlet	25	815-0194	8	Screw, Cap - Hex Head (#10-32 x 3/8")
6	150-1358	1	Joint, Ball	26	815-0235	3	Screw, Cap - Hex Head (1/4-20 x 5/8")
7	134-1808	1	Rod, Shutter Control - Upper	27	813-0097	2	Screw, Machine - Round Head (#10-32 x 5/16")
8	134-1807	1	Rod, Shutter Control - Lower	28	821-0010	4	Screw, Cap - Hex Head Locking (1/4-20 x 1/2")
9	134-2900	4	Bearing, Shutter	29	526-0113	1	Washer, Flat (11/32" ID x 1" OD x 3/32" Thk)
10	134-1248	2	Bearing, Actuating Arm	30	953-0008	2	Washer, Lock - ET (#8)
11	134-1610	1	Bracket and Guide Vernatherm	31	853-0016	1	Washer, Lock - ET (5/16")
12	134-0658	1	Spring, Vernatherm Element	32	853-0013	3	Washer, Lock - ET (1/4")
13	309-0085	1	Element, Vernatherm	33	856-0008	4	Washer, Lock - EIT (1/4")
14	134-0658	1	Spring, Shutter Return - Lower	34	870-0131	1	Nut, Hex - Locking (#10-32)
15	134-1817	1	Spring, Shutter Return - Upper	35	864-0002	1	Nut, Jam - Hex (5/16-18)
16	518-0004	1	Clip, Rod End - Right Side	36	870-0178	3	Nut, Clinch (1/4-20)
17	518-0006	2	Clip, Rod End - Left Side	37	870-0131	8	Nut, Lock (#10-32) Shutter Mounting
18	134-1805	1	Shaft, Actuating Arm				
19	134-1804	1	Arm, Actuating				

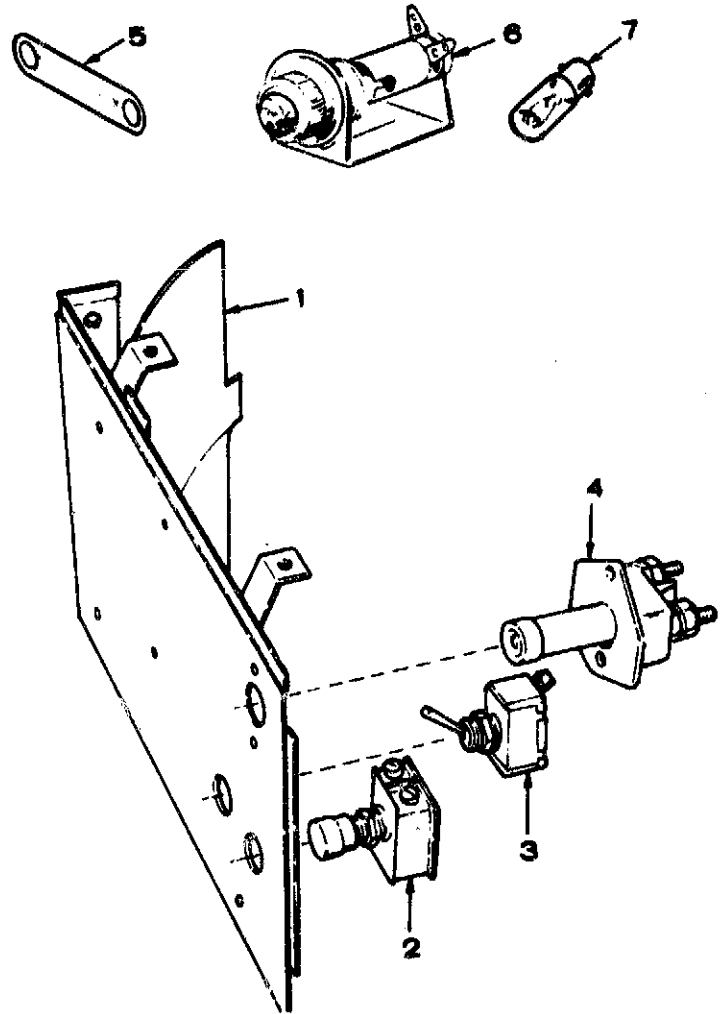
AIR SHUTTER DISCHARGE (EXTERNAL SPRINGS) - OPTIONAL



REF. NO.	PART NO.	QTY. USED	PART DESCRIPTION
	134-1737	1	Shutter Assembly, Complete (External Springs) For Complete Replacement order 134-1811 Shutter Assembly
1		1	Duct Only - Not Sold Separately
2	134-1242	3	Bracket and Pivot, Shutter
3	134-1238	1	Bracket, Shaft and Pin Shutter
4	134-1252	2	Shutter, Air Outlet
5	150-0998	1	Joint, Ball
6	134-1247	1	Rod, Shutter Control
7	134-1248	4	Bearing, Air Shutter
8	134-1244	1	Bracket and Guide Vernatherm
9	134-0658	1	Spring, Vernatherm Element
10	309-0085	1	Element, Vernatherm
11	134-0658	1	Spring, Shutter Return
12	518-0008	1	Clip, Rod End
13	134-1437	2	Spring, Shutter Pivot

CONTROL (ENGINE) - OPTIONAL

REF. NO.	PART NO.	QTY. USED	PART DESCRIPTION
1	HOUSING, CYLINDER AIR - REAR		
	134-1508	1	Spec P Through T
	134-2256	1	Begin Spec V
2	308-0198	1	Switch, Start
3	308-0007	1	Switch, Fuel Solenoid
4	308-0028	1	Switch, Glow Plug
5	332-0592	1	Jumper, Terminal (Start Switch on Engines with Oil Pressure Switch)
6	322-0089	1	Light, Pilot - Red (Engines with Charging Alternator)
7	322-0017	1	Lamp, Pilot Light (Engines with Charging Alternator)



SERVICE KITS AND MISCELLANEOUS

REF. NO.	PART NO.	QTY. USED	PART DESCRIPTION
	98-1100	1	Decal Kit, Engine
	168-0086	1	Gasket Kit, Engine
	522-0201	1	Overhaul Kit, Engine - Spec P through S
	522-0247	1	Overhaul Kit, Engine - Begin Spec S
	525-0137	As Req.	Paint, Touch-up (Pressurized Can) 16-oz. Green Enamel

NOTE: For other Kits, refer to the group for the part in question.

SPECIAL PARTS LIST FOR **MODEL** DJBA-MS **SPEC** 1W

FOR STANDARD PARTS REFER TO **CATALOG** 967-0423 **KEY NO.** -

OPTIONAL GROUPS IN CATALOG ARE LISTED BY GROUP NO. BELOW WHEN USED.

PART NO.	QTY.	DESCRIPTION	PART NO.	QTY.	DESCRIPTION
Standard Model					

SPECIAL PARTS LIST FOR **MODEL** DJBA-MS **SPEC** 1171T
 FOR STANDARD PARTS REFER TO **CATALOG** 967-0423 **KEY NO.** -
 OPTIONAL GROUPS IN CATALOG ARE LISTED BY GROUP NO. BELOW WHEN USED.

PART NO.	QTY.	DESCRIPTION	PART NO.	QTY.	DESCRIPTION
Flywheel Alternator Variable Speed Governor Control (1,200 To 2,400 RPM) Low Oil Pressure Cut Off 134-1371 1 Housing, Blower					

SPECIAL PARTS LIST FOR **MODEL** DJBA-MS **SPEC** 1498W
FOR STANDARD PARTS REFER TO **CATALOG** 967-0423 **KEY NO.** -
OPTIONAL GROUPS IN CATALOG ARE LISTED BY GROUP NO. BELOW WHEN USED.

PART NO.	QTY.	DESCRIPTION	PART NO.	QTY.	DESCRIPTION
Two Speed Governor Control (1,200 To 2,400 RPM)					
134-1357	1	Housing, Blower			

SPECIAL PARTS LIST FOR **MODEL** DJBA-MS **SPEC** 1557W
FOR STANDARD PARTS REFER TO **CATALOG** 967-0423 **KEY NO.** -
OPTIONAL GROUPS IN CATALOG ARE LISTED BY GROUP NO. BELOW WHEN USED.

PART NO.	QTY.	DESCRIPTION	PART NO.	QTY.	DESCRIPTION
Variable Speed Governor Control (1,200 To 2,400 RPM) Control (Engine)					
134-1357	1	Housing, Blower			

SPECIAL PARTS LIST FOR **MODEL** DJBA-MS **SPEC** 1832W

FOR STANDARD PARTS REFER TO **CATALOG** 967-0423 **KEY NO.** -

OPTIONAL GROUPS IN CATALOG ARE LISTED BY GROUP NO. BELOW WHEN USED.

PART NO.	QTY.	DESCRIPTION	PART NO.	QTY.	DESCRIPTION
		Flywheel Alternator - 12 Volt (Wico)			
134-2255	1	Housing, Blower			

SPECIAL PARTS LIST FOR MODEL DJBA-MS SPEC 2150V
 FOR STANDARD PARTS REFER TO CATALOG 967-0423 KEY NO. -
 OPTIONAL GROUPS IN CATALOG ARE LISTED BY GROUP NO. BELOW WHEN USED.

PART NO.	QTY.	DESCRIPTION	PART NO.	QTY.	DESCRIPTION
Flywheel Alternator - 12 Volt (Wico)					
Low Oil Pressure Cut Off					
102-0687	1	Base, Oil			
123-0826	1	Cap And Indicator, Oil Fill (Includes Gasket)			
123-0191	1	Gasket, Oil Fill Cap			
123-0787	1	Cap, Breather Tube			
503-0462	1	Hose, Breather			
123-0645	1	Tube, Breather			
123-1283	1	Filter, Breather			
115-0134	1	Cover, Rocker			
120-0579	1	Cup, Oil Pump Intake			
140-0645	1	Adapter, Remote Air Cleaner			
307-0794	1	Solenoid, Stopping			
306-0193	1	Cover, Solenoid Plunger			
518-0218	2	Ring, Retaining - Solenoid Plunger Cover			
134-2255	1	Housing, Blower			
134-2297	1	Housing, Cylinder Air - Rear			
134-2319	1	Pan, Cylinder Air Housing - Bottom			
331-0088	1	Bushing, Snap - Cylinder Air Housing Pan (Nylon, 1-3/32" Hole)			
332-0391	1	Block, Terminal (4 Place)			
332-0231	1	Block, Terminal (2 Place)			
Parts Not Furnished By Onan					
Air Cleaner					

SPECIAL PARTS LIST FOR MODEL DJBA-MS SPEC 2223V
 FOR STANDARD PARTS REFER TO CATALOG 967-0423 KEY NO. -
 OPTIONAL GROUPS IN CATALOG ARE LISTED BY GROUP NO. BELOW WHEN USED.

PART NO.	QTY.	DESCRIPTION	PART NO.	QTY.	DESCRIPTION
Flywheel Alternator - 12 Volt (Wico)					
Low Oil Pressure Cut Off					
102-0699	1	Base, Oil			
123-0826	1	Cap And Indicator, Oil Fill (Includes Gasket)			
123-0191	1	Gasket, Oil Fill Cap			
120-0579	1	Cup, Oil Pump Intake			
140-0645	1	Adapter, Remote Air Cleaner			
307-0794	1	Solenoid, Stopping			
306-0193	1	Cover, Solenoid Plunger			
518-0218	2	Ring, Retaining - Solenoid Plunger Cover			
134-2297	1	Housing, Cylinder Air - Rear			
134-2319	1	Pan, Cylinder Air Housing - Bottom			
331-0088	1	Bushing, Snap - Cylinder Air Housing Pan (Nylon, 1-3/32" Hole)			
332-0391	2	Block, Terminal (4 Place)			
332-0231	1	Block, Terminal (2 Place)			
508-0109	1	Grommet, Rubber - Housing Cover (1" Hole)			
134-2427	1	Housing, Blower			
508-0021	1	Grommet, Rubber - Blower Housing (3/4" Hole)			
305-0514	1	Regulator-Rectifier			
402-0409	3	Mount, Shock - Regulator (Rubber)			
150-1357	1	Bracket, Governor			
321-0165	1	Holder, Fuse (Includes Fuse)			
321-0162	1	Fuse (30 Amp, 250 Volt)			
Parts Not Furnished By Onan					
Air Cleaner					

SPECIAL PARTS LIST FOR **MODEL** DJBA-MS **SPEC** 2300V
 FOR STANDARD PARTS REFER TO **CATALOG** 967-0423 **KEY NO.** -
 OPTIONAL GROUPS IN CATALOG ARE LISTED BY GROUP NO. BELOW WHEN USED.

PART NO.	QTY.	DESCRIPTION	PART NO.	QTY.	DESCRIPTION
		Two Speed Governor Control (1,200 To 2,400 RPM)			
		Flywheel Alternator - 12 Volt (Wico)			
		Low Oil Pressure Cut Off Control (Engine)			
134-2253	1	Housing, Blower			

SPECIAL PARTS LIST FOR **MODEL** DJBA-MS **SPEC** 2319V
 FOR STANDARD PARTS REFER TO **CATALOG** 967-0423 **KEY NO.** -
 OPTIONAL GROUPS IN CATALOG ARE LISTED BY GROUP NO. BELOW WHEN USED.

PART NO.	QTY.	DESCRIPTION	PART NO.	QTY.	DESCRIPTION
		Variable Speed Governor Control (1,200 To 2,400 RPM)			
		Flywheel Alternator - 12 Volt (Wico)			
		Control (Engine)			
134-2253	1	Housing, Blower			

SPECIAL PARTS LIST FOR **MODEL** DJBA-MF **SPEC** 2320V
 FOR STANDARD PARTS REFER TO **CATALOG** 967-0423 **KEY NO.** -
 OPTIONAL GROUPS IN CATALOG ARE LISTED BY GROUP NO. BELOW WHEN USED.

PART NO.	QTY.	DESCRIPTION	PART NO.	QTY.	DESCRIPTION
Variable Speed Governor Control (1,200 To 2,400 RPM) Flywheel Alternator - 12 Volt (Wico) Clutch (Rockford) Control (Engine)					
134-2253	1	Housing, Blower			

SPECIAL PARTS LIST FOR MODEL DJBA-MS SPEC 2358W
 FOR STANDARD PARTS REFER TO CATALOG 967-0423 KEY NO. -
 OPTIONAL GROUPS IN CATALOG ARE LISTED BY GROUP NO. BELOW WHEN USED.

PART NO.	QTY.	DESCRIPTION	PART NO.	QTY.	DESCRIPTION
Flywheel Alternator - 12 Volt (Wico)					
Low Oil Pressure Cut Off					
102-0699	1	Base, Oil			
123-0826	1	Cap And Indicator, Oil Fill (Includes Gasket)			
123-0191	1	Gasket, Oil Fill Cap			
120-0579	1	Cup, Oil Pump Intake			
140-0645	1	Adapter, Remote Air Cleaner			
307-0794	1	Solenoid, Stopping			
306-0193	1	Cover, Solenoid Plunger			
518-0218	2	Ring, Retaining - Solenoid Plunger Cover			
150-1357	1	Bracket, Governor			
150-1372	1	Spring, Governor			
332-1471	2	Clamp, Cable (5/16")			
134-2297	1	Housing, Cylinder Air - Rear			
134-2319	1	Pan, Cylinder Air Housing - Bottom			
331-0088	1	Bushing, Snap - Cylinder Air Housing Pan (Nylon, 1-3/32" Hole)			
332-0391	2	Block, Terminal (4 Place)			
332-0231	1	Block, Terminal (2 Place)			
508-0109	1	Grommet, Rubber - Housing Cover (1" Hole)			
134-2427	1	Housing, Blower			
508-0021	1	Grommet, Rubber - Blower Housing (3/4" Hole)			
305-0514	1	Regulator-Rectifier			
402-0409	3	Mount, Shock - Regulator (Rubber)			
321-0165	1	Holder, Fuse (Includes Fuse)			
321-0162	1	Fuse (30 Amp, 250 Volt)			
Parts Not Furnished By Onan					
Air Cleaner					
Oil Pressure Gauge					

SPECIAL PARTS LIST FOR **MODEL** DJBA-MF **SPEC** 2359W
FOR STANDARD PARTS REFER TO **CATALOG** 967-0423 **KEY NO.** -
OPTIONAL GROUPS IN CATALOG ARE LISTED BY GROUP NO. BELOW WHEN USED.

PART NO.	QTY.	DESCRIPTION	PART NO.	QTY.	DESCRIPTION
		Flywheel Alternator - 12 Volt (Wico)			
		Clutch (Rockford)			
		Control (Engine)			
134-2253	1	Housing, Blower			

SPECIAL PARTS LIST FOR **MODEL** DJBA-MS **SPEC** 2401W
 FOR STANDARD PARTS REFER TO **CATALOG** 967-0423 **KEY NO.** -
 OPTIONAL GROUPS IN CATALOG ARE LISTED BY GROUP NO. BELOW WHEN USED.

PART NO.	QTY.	DESCRIPTION	PART NO.	QTY.	DESCRIPTION
Two Speed Governor Control (1,200 To 2,400 RPM) Flywheel Alternator - 12 Volt (Wico) Control (Engine)					
134-2253	1	Housing, Blower			

SPECIAL PARTS LIST FOR **MODEL** DJBA-MS **SPEC** 2422W
 FOR STANDARD PARTS REFER TO **CATALOG** 967-0423 **KEY NO.** -
 OPTIONAL GROUPS IN CATALOG ARE LISTED BY GROUP NO. BELOW WHEN USED.

PART NO.	QTY.	DESCRIPTION	PART NO.	QTY.	DESCRIPTION
Flywheel Alternator - 12 Volt (Wico) Control (Engine)					
134-2255	1	Housing, Blower			

SPECIAL PARTS LIST FOR **MODEL** DJBA-MS **SPEC** 2445W
FOR STANDARD PARTS REFER TO **CATALOG** 967-0423 **KEY NO.** -
OPTIONAL GROUPS IN CATALOG ARE LISTED BY GROUP NO. BELOW WHEN USED.

PART NO.	QTY.	DESCRIPTION	PART NO.	QTY.	DESCRIPTION
		Flywheel Alternator - 12 Volt (Wico)			
		Low Oil Pressure Cut Off			
		Start Disconnect			
134-2255	1	Housing, Blower			

SPECIAL PARTS LIST FOR **MODEL** DJBA-MS **SPEC** 2453W
 FOR STANDARD PARTS REFER TO **CATALOG** 967-0423 **KEY NO.** -
 OPTIONAL GROUPS IN CATALOG ARE LISTED BY GROUP NO. BELOW WHEN USED.

PART NO.	QTY.	DESCRIPTION	PART NO.	QTY.	DESCRIPTION
Variable Speed Governor Control (1,200 To 2,400 RPM) Low Oil Pressure Cut Off					
134-1357	1	Housing, Blower			

SPECIAL PARTS LIST FOR **MODEL** DJBA-MF **SPEC** 2465W
 FOR STANDARD PARTS REFER TO **CATALOG** 967-0423 **KEY NO.** -
 OPTIONAL GROUPS IN CATALOG ARE LISTED BY GROUP NO. BELOW WHEN USED.

PART NO.	QTY.	DESCRIPTION	PART NO.	QTY.	DESCRIPTION
Variable Speed Governor Control (1,200 To 2,400 RPM)					
Flywheel Alternator - 12 Volt (Wico)					
Low Oil Pressure Cut Off					
Clutch (Twin Disc)					
Control (Engine)					
102-0509	1	Base, Oil			
134-2253	1	Housing, Blower			

SPECIAL PARTS LIST FOR **MODEL** DJBA-MF **SPEC** 2466W
 FOR STANDARD PARTS REFER TO **CATALOG** 967-0423 **KEY NO.** -
 OPTIONAL GROUPS IN CATALOG ARE LISTED BY GROUP NO. BELOW WHEN USED.

PART NO.	QTY.	DESCRIPTION	PART NO.	QTY.	DESCRIPTION
Variable Speed Governor Control (1,200 To 2,400 RPM) Flywheel Alternator - 12 Volt (Wico) Clutch (Twin Disc) Control (Engine)					
134-2253	1	Housing, Blower			

SPECIAL PARTS LIST FOR MODEL DJBA-MF **SPEC** 2468W
FOR STANDARD PARTS REFER TO CATALOG 967-0423 **KEY NO.** -
OPTIONAL GROUPS IN CATALOG ARE LISTED BY GROUP NO. BELOW WHEN USED.

PART NO.	QTY.	DESCRIPTION	PART NO.	QTY.	DESCRIPTION
Flywheel Alternator - 12 Volt (Wico)			415-0266	1	Cap, Fuel Tank
Low Oil Pressure Cut Off			415-0269	1	Gasket, Fuel Tank Cap
Clutch (Twin Disc)			518-0253	1	Ring, Retaining - Fuel Adapter To Cap (External)
Control (Engine)			415-0263	1	Pipe, Fuel Tank Adapter
505-0050	1	Elbow, Street - Oil Base Drain (90°)	501-0115	1	Line, Fuel (25")
505-0078	1	Nipple, Pipe - Oil Base Drain (1/2" X 2-1/2")	501-0119	1	Line, Fuel
504-0011	1	Cock, Drain - Oil Base	155-0873	1	Muffler, Exhaust
505-0100	1	Nipple, Close - Oil Base Drain (1/2" X 1-1/8")	155-0985	1	Cap, Rain
503-0509	1	Hose, Oil Drain	416-0543	1	Tray, Battery
503-0197	1	Clamp, Hose - Oil Drain	416-0338	1	Hold-Down, Battery
103-0423	1	Cover Assembly, Gear (Refer To Standard Gear Cover For Components, Except Parts Marked #)	416-0545	1	Stud, Battery Hold-Dwon
150-0901	1	#Shaft, Governor	416-0549	2	Cable, Battery
150-0900	1	#Arm, Governor Spring	502-0312	1	Connector, Female - Return Fuel
518-0128	1	#Ring, Retaining - Governor Yoke	501-0107	1	Line, Fuel Return (7")
150-0847	1	Arm, Governor	134-2636	1	Housing, Blower
151-0206	1	Spring, Governor	134-1707	1	Cover, Shroud And Nozzle
150-0940	1	Bracket, Governor Spring	301-2634	1	Box, Control
150-0942	1	Clamp, Wire - Governor Bracket	301-2635	1	Panel, Control Box
152-0041	1	Washer, Governor Arm Tension	517-0022	1	Plug, Dot Button - Control Panel (3/4" Hole)
150-0973	1	Arm, Governor Stud Adjusting			
152-0155	1	Swivel, Governor Wire			
150-0945	1	Stud, Governor Adjusting			
152-0163	1	Bracket, Throttle Cable			
153-0382	1	Cable, Throttle Control			
153-0014	1	Nut, Throttle Control			
307-0891	1	Solenoid, Stop			
306-0193	1	Cover, Solenoid Plunger			
518-0218	2	Ring, Retaining - Solenoid Plunger Cover			
332-1113	1	Clamp, Loop - Blower Housing			
134-1708	1	Bracket, Fuel Adapter - Blower Housing			
159-0803	1	Tank, Fuel (5 Gallon)			
415-0267	1	Adapter, Fuel Tank			
504-0005	1	Valve, Shut-Off - Fuel Adapter			
502-0309	1	Elbow, Fuel Adapter			
502-0310	1	Connector, Fuel Adapter			
509-0116	2	O-Ring, Fuel Adapter			

SPECIAL PARTS LIST FOR MODEL DJBAM-MS SPEC 2484W
 FOR STANDARD PARTS REFER TO CATALOG 967-0423 KEY NO. -
 OPTIONAL GROUPS IN CATALOG ARE LISTED BY GROUP NO. BELOW WHEN USED.

PART NO.	QTY.	DESCRIPTION	PART NO.	QTY.	DESCRIPTION
Low Oil Pressure Cut Off			191-0713	1	*Armature, Starter Motor
High Air Temperature Cut Off			191-0432	1	*Clutch, Starter
104-0655	1	Crankshaft	191-1023	1	*Head Assembly, Starter (Commutator End)
333-0107	2	Plug, Glow (Includes Gasket)	191-0497	1	*Bearing, Drive End - Starter
110-0546	2	Gasket, Glow Plug	191-1028	1	*Core Assembly, Moving - Starter
140-0645	1	Adapter, Remote Air Cleaner	191-1079	1	*Switch, Solenoid - Starter
140-0734	1	Manifold, Carburetor Air Intake	191-1027	1	*Spring, Solenoid Plunger - Starter
154-0712	2	Heater, Manifold Air (Includes Gasket)	191-1031	1	*Thrust Washer Package, Armature - Starter
140-0705	1	Plate, Manifold Air Heater	191-1032	1	*Yoke, Starter
140-0706	1	Gasket, Manifold Air Heater Plate	191-1080	1	*Brush Set, Starter
508-0102	2	Washer, Insulating - Air Heater Plate Mounting (Mica)	307-0061	1	Solenoid, Start
508-0103	2	Sleeve, Insulating - Air Heater Plate Mounting (Mica)	307-0668	1	Solenoid, Stop
114-0023	2	Screw, Cap - Air Heater Plate (1/4 - 20 X 1-1/4")	309-0206	1	Switch, High Air Temperatu
336-1408	1	Jumper, Air Heater	134-2643	1	Pan, Cylinder Air Housing (Bottom)
122-0245	1	Adapter, Oil Filter	134-1447	1	Housing, Blower
122-0246	1	Gasket, Oil Filter Adapter	134-1449	1	Housing, Cylinder Air - Front
309-0130	1	Thermostat, Oil			
122-0242	1	Spring, Oil By-Pass			
122-0243	1	Gasket, Oil By-Pass Cover			
122-0244	1	Cover, Oil By-Pass			
505-0274	1	Plug, Pipe - Oil Filter Adapter (1/8")			
502-0053	1	Elbow, Street - Oil Pressure Gauge (45°)			
502-0277	2	Elbow, Male - Filter Adapter To Oil Cooler (90°)			
102-0615	1	Cooler, Oil			
102-0518	1	Plate, Oil Cooler Mounting			
501-0109	1	Line, Oil - Adapter To Cooler (17-3/8" Lg.)			
501-0110	1	Line, Oil - Cooler To Adapter (16" Lg.)			
103-0272	1	Backplate, Gear Cover			
191-0429	1	Motor, Starter (Includes Parts Marked *)			

Parts Not Furnished By Onan
Air Cleaner

SPECIAL PARTS LIST FOR MODEL DJBA-MF SPEC 2496W
 FOR STANDARD PARTS REFER TO CATALOG 967-0423 KEY NO. -
 OPTIONAL GROUPS IN CATALOG ARE LISTED BY GROUP NO. BELOW WHEN USED.

PART NO.	QTY.	DESCRIPTION	PART NO.	QTY.	DESCRIPTION
Variable Speed Governor Control (1,200 To 2,400 RPM)					
Flywheel Alternator - 12 Volt (Wico) Control (Engine)					
104-0655	1	Crankshaft			
134-1475	1	Flywheel (Includes Ring Gear)			
134-1504	1	Hub, Flywheel			
104-0543	1	Spacer And Washer Assembly, Hub To Flywheel			
190-0251	1	Housing, Clutch			
134-2253	1	Housing, Blower			

SPECIAL PARTS LIST FOR MODEL DJBMA-MS SPEC 2578W
 FOR STANDARD PARTS REFER TO CATALOG 967-0423 KEY NO. -
 OPTIONAL GROUPS IN CATALOG ARE LISTED BY GROUP NO. BELOW WHEN USED.

PART NO.	QTY.	DESCRIPTION	PART NO.	QTY.	DESCRIPTION
Low Oil Pressure Cut Off			191-0713	1	*Armature, Starter Motor
High Air Temperature Cut Off			191-0432	1	*Clutch, Starter
			191-1023	1	*Head Assembly, Starter (Commutator End)
104-0655	1	Crankshaft	191-0497	1	*Bearing, Drive End - Starter
333-0107	2	Plug, Glow (Includes Gasket)	191-1028	1	*Core Assembly, Moving - Starter
110-0546	2	Gasket, Glow Plug	191-1079	1	*Switch, Solenoid - Starter
149-1038	1	Pump, Fuel Transfer (Refer To Standard Fuel Pump For Components, Except Parts Marked #)	191-1027	1	*Spring, Solenoid Plunger - Starter
149-0662	1	#Bowl, Fuel Pump (Metal)	191-1031	1	*Thrust Washer Package, Armature - Starter
504-0093	2	Cock, Fuel Filter Drain	191-1032	1	*Yoke, Starter
140-0645	1	Adapter, Remote Air Cleaner	191-1080	1	*Brush Set, Starter
140-0734	1	Manifold, Carburetor Air Intake	307-0061	1	Solenoid, Start
154-0712	2	Heater, Manifold Air (Includes Gasket)	307-1281	1	Solenoid, Stop
140-0705	1	Plate, Manifold Air Heater	306-0193	1	Cover, Solenoid Plunger
140-0706	1	Gasket, Manifold Air Heater Plate	518-0218	2	Ring, Retaining - Solenoid Plunger Cover
508-0102	2	Washer, Insulating - Air Heater Plate Mounting (Mica)	309-0206	1	Switch, High Air Temperatur
508-0103	2	Sleeve, Insulating - Air Heater Plate Mounting (Mica)	134-2643	1	Pan, Cylinder Air Housing (Bottom)
114-0023	2	Screw, Cap - Air Heater Plate (1/4 - 20 X 1-1/4")	134-1447	1	Housing, Blower
336-1408	1	Jumper, Air Heater	134-1449	1	Housing, Cylinder Air - Front
122-0245	1	Adapter, Oil Filter	Parts Not Furnished By Onan Air Cleaner		
122-0246	1	Gasket, Oil Filter Adapter			
309-0130	1	Thermostat, Oil			
122-0242	1	Spring, Oil By-Pass			
122-0243	1	Gasket, Oil By-Pass Cover			
122-0244	1	Cover, Oil By-Pass			
505-0274	1	Plug, Pipe - Oil Filter Adapter (1/8")			
502-0053	1	Elbow, Street - Oil Pressure Gauge (45°)			
502-0277	2	Elbow, Male - Filter Adapter To Oil Cooler (90°)			
102-0615	1	Cooler, Oil			
102-0518	1	Plate, Oil Cooler Mounting			
501-0109	1	Line, Oil - Adapter To Cooler (17-3/8" Lg.)			
501-0110	1	Line, Oil - Cooler To Adapter (16" Lg.)			
103-0272	1	Backplate, Gear Cover			
191-0429	1	Motor, Starter (Includes Parts Marked *)			

SPECIAL PARTS LIST FOR **MODEL** DJBA-MS **SPEC** 2587W
 FOR STANDARD PARTS REFER TO **CATALOG** 967-0423 **KEY NO.** -
 OPTIONAL GROUPS IN CATALOG ARE LISTED BY GROUP NO. BELOW WHEN USED.

PART NO.	QTY.	DESCRIPTION	PART NO.	QTY.	DESCRIPTION
Variable Speed Governor Control (1,200 To 2,400 RPM)					
Flywheel Alternator - 12 Volt (Wico)					
Low Oil Pressure Cut Off Control (Engine)					
134-2253	1	Housing, Blower			

SPECIAL PARTS LIST FOR MODEL DJBA-MF SPEC 2605W

FOR STANDARD PARTS REFER TO CATALOG 967-0423 KEY NO. -

OPTIONAL GROUPS IN CATALOG ARE LISTED BY GROUP NO. BELOW WHEN USED.

PART NO.	QTY.	DESCRIPTION	PART NO.	QTY.	DESCRIPTION
		Variable Speed Governor Control (1,200 To 2,400 RPM)			
		Flywheel Alternator - 12 Volt (Wico)			
		Low Oil Pressure Cut Off			
		Clutch (Twin Disc)			
		Control (Engine)			
134-2253	1	Housing, Blower			

SPECIAL PARTS LIST FOR **MODEL** DJBA-MS **SPEC** 2637W

FOR STANDARD PARTS REFER TO **CATALOG** 967-0423 **KEY NO.** -

OPTIONAL GROUPS IN CATALOG ARE LISTED BY GROUP NO. BELOW WHEN USED.

PART NO.	QTY.	DESCRIPTION	PART NO.	QTY.	DESCRIPTION
		Flywheel Alternator - 12 Volt (Wico)			
		Low Oil Pressure Cut Off			
		Control (Engine)			
134-2255	1	Housing, Blower			

SPECIAL PARTS LIST FOR **MODEL** DJBA-MS **SPEC** 2844W
 FOR STANDARD PARTS REFER TO **CATALOG** 967-0423 **KEY NO.** -
 OPTIONAL GROUPS IN CATALOG ARE LISTED BY GROUP NO. BELOW WHEN USED.

PART NO.	QTY.	DESCRIPTION	PART NO.	QTY.	DESCRIPTION
Variable Speed Governor Control (1,200 To 2,400 RPM)					
Flywheel Alternator - 12 Volt (Wico)					
Low Oil Pressure Cut Off					
High Air Temperature Cut Off					
Control (Engine)					
134-2253	1	Housing, Blower			
140-0645	1	Adapter, Remote Air Cleaner			
Parts Not Furnished By Onan					
Air Cleaner					

SPECIAL PARTS LIST FOR **MODEL** DJBMA-MS **SPEC** 2892V
 FOR STANDARD PARTS REFER TO **CATALOG** 967-0423 **KEY NO.** -
 OPTIONAL GROUPS IN CATALOG ARE LISTED BY GROUP NO. BELOW WHEN USED.

PART NO.	QTY.	DESCRIPTION	PART NO.	QTY.	DESCRIPTION
Flywheel Alternator - 12 Volt (Wico) Low Oil Pressure Cut Off High Air Temperature Cut Off Air Shutter Variable Speed Governor Control (1,200 To 2,400 RPM)					
104-0655	1	Crankshaft			
115-0134	1	Cover, Rocker			
123-0952	1	Tube, Breather			
123-1203	1	Cap And Valve, Breather			
123-0958	1	Screen, Breather			
509-0117	1	O-Ring, Breather			
123-1153	1	Cup, Breather Baffle			
503-0557	1	Hose, Breather			
503-0170	2	Clamp, Breather Hose			
123-0998	2	Insulator, Breather			
518-0268	1	Clamp, Breather Insulator			
503-0559	1	Insulator, Breather Hose			
134-2253	1	Housing, Blower			
149-0979	1	Pump, Fuel Transfer (Refer To Standard Fuel Pump For Components)			
502-0020	1	Elbow, Street - Fuel Pump Outlet			
501-0003	1	Line, Flexible - Fuel Pump To Filter			

SPECIAL PARTS LIST FOR **MODEL** DJBA-MS **SPEC** 2926W
 FOR STANDARD PARTS REFER TO **CATALOG** 967-0423 **KEY NO.** -
 OPTIONAL GROUPS IN CATALOG ARE LISTED BY GROUP NO. BELOW WHEN USED.

PART NO.	QTY.	DESCRIPTION	PART NO.	QTY.	DESCRIPTION
Variable Speed Governor Control (1,200 To 2,400 RPM)					
Flywheel Alternator - 12 Volt (Wico)					
Control (Engine)					
140-0645	1	Adapter, Remote Air Cleaner			
134-2253	1	Housing, Blower			
Parts Not Furnished By Onan					
Air Cleaner					

SPECIAL PARTS LIST FOR MODEL DJBA-MF SPEC 3062W
 FOR STANDARD PARTS REFER TO CATALOG 967-0423 KEY NO. -
 OPTIONAL GROUPS IN CATALOG ARE LISTED BY GROUP NO. BELOW WHEN USED.

PART NO.	QTY.	DESCRIPTION	PART NO.	QTY.	DESCRIPTION
Variable Speed Governor Control (1,200 To 2,400 RPM)					
Flywheel Alternator - 12 Volt (Wico)					
Low Oil Pressure Cut Off					
Clutch (Twin Disc)					
Control (Engine)					
140-0645	1	Adapter, Remote Air Cleaner			
134-2253	1	Housing, Blower			
Parts Not Furnished By Onan					
Air Cleaner					

SPECIAL PARTS LIST FOR MODEL DJBA-MF SPEC 3172W

FOR STANDARD PARTS REFER TO CATALOG 967-0423 KEY NO. -

OPTIONAL GROUPS IN CATALOG ARE LISTED BY GROUP NO. BELOW WHEN USED.

PART NO.	QTY.	DESCRIPTION	PART NO.	QTY.	DESCRIPTION
----------	------	-------------	----------	------	-------------

Flywheel Alternator - 12 Volt (Wico)
Low Oil Pressure Cut Off
Clutch (Twin Disc)
Control (Engine)

134-2255 1 Housing, Blower

SPECIAL PARTS LIST FOR **MODEL** DJBA-MS **SPEC** 3225W
 FOR STANDARD PARTS REFER TO **CATALOG** 967-0423 **KEY NO.** -
 OPTIONAL GROUPS IN CATALOG ARE LISTED BY GROUP NO. BELOW WHEN USED.

PART NO.	QTY.	DESCRIPTION	PART NO.	QTY.	DESCRIPTION
Variable Speed Governor Control (1,200 To 2,400 RPM)					
Low Oil Pressure Cut Off					
High Air Temperature Cut Off Control (Engine)					
134-2253	1	Housing, Blower			

SPECIAL PARTS LIST FOR MODEL DJBMA-MS SPEC 3300W
 FOR STANDARD PARTS REFER TO CATALOG 967-0423 KEY NO. -
 OPTIONAL GROUPS IN CATALOG ARE LISTED BY GROUP NO. BELOW WHEN USED.

PART NO.	QTY.	DESCRIPTION	PART NO.	QTY.	DESCRIPTION
Low Oil Pressure Cut Off			502-0053	1	Elbow, Street - Oil Pressure Gauge (45°)
High Air Temperature Cut Off			502-0277	2	Elbow, Male - Filter Adapter To Oil Cooler (90°)
104-0655	1	Crankshaft	102-0615	1	Cooler, Oil
333-0107	2	Plug, Glow (Includes Gasket)	102-0518	1	Plate, Oil Cooler Mounting
110-0546	2	Gasket, Glow Plug	501-0109	1	Line, Oil - Adapter To Cooler (17-3/8" Lg.)
149-1038	1	Pump, Fuel Transfer (Refer To Standard Fuel Pump For Components, Except Parts Marked *)	501-0110	1	Line, Oil - Cooler To Adapter (16" Lg.)
149-0662	1	*Bowl, Fuel Pump (Metal)	103-0529	1	Backplate, Gear Cover
140-0645	1	Adapter, Remote Air Cleaner	306-0242	1	Screw, Brass - Start Solenoid Adjusting
140-0734	1	Manifold, Carburetor Air Intake	307-1562	1	Solenoid, Start
154-0712	2	Heater, Manifold Air (Includes Gasket)	307-1561	1	Solenoid, Stop
140-0705	1	Plate, Manifold Air Heater	309-0206	1	Switch, High Air Temperature
140-0706	1	Gasket, Manifold Air Heater Plate	134-2643	1	Pan, Cylinder Air Housing (Bottom)
508-0102	2	Washer, Insulating - Air Heater Plate Mounting (Mica)	134-1447	1	Housing, Blower
508-0103	2	Sleeve, Insulating - Air Heater Plate Mounting (Mica)	134-1449	1	Housing, Cylinder Air - Front
114-0023	2	Screw, Cap - Air Heater Plate (1/4 - 20 X 1-1/4")	Parts Not Furnished By Onan Air Cleaner Starter Motor		
336-1408	1	Jumper, Air Heater			
502-0054	1	Elbow, Street - Injection Pump Inlet			
501-0129	1	Line, Fuel - Filter To Injection Pump			
149-1189	1	Line, Fuel - Transfer Pump To Filter			
502-0002	2	Elbow, Inverted Male - Transfer Pump Inlet And Outlet			
123-1086	1	Tube, Oil Fill			
502-0246	1	Elbow, Inverted Flare - Primary Fuel Filter Inlet			
122-0245	1	Adapter, Oil Filter			
122-0246	1	Gasket, Oil Filter Adapter			
309-0130	1	Thermostat, Oil			
122-0242	1	Spring, Oil By-Pass			
122-0243	1	Gasket, Oil By-Pass Cover			
122-0244	1	Cover, Oil By-Pass			
505-0274	1	Plug, Pipe - Oil Filter Adapter (1/8")			

SPECIAL PARTS LIST FOR **MODEL** DJBA-MF **SPEC** 3502W
FOR STANDARD PARTS REFER TO **CATALOG** 967-0423 **KEY NO.** -
OPTIONAL GROUPS IN CATALOG ARE LISTED BY GROUP NO. BELOW WHEN USED.

PART NO.	QTY.	DESCRIPTION	PART NO.	QTY.	DESCRIPTION
		Low Oil Pressure Cut Off			
		Start Disconnect			
		Clutch (Twin Disc)			

SPECIAL PARTS LIST FOR **MODEL** DJBA-ME **SPEC** 3590W
 FOR STANDARD PARTS REFER TO **CATALOG** 967-0423 **KEY NO.** -
 OPTIONAL GROUPS IN CATALOG ARE LISTED BY GROUP NO. BELOW WHEN USED.

PART NO.	QTY.	DESCRIPTION	PART NO.	QTY.	DESCRIPTION
Flywheel Alternator - 12 Volt (Wico) Low Oil Pressure Cut Off Clutch (Rockford) Control (Engine)					
134-2255	1	Housing, Blower			

SPECIAL PARTS LIST FOR **MODEL** DJBA-MS **SPEC** 3652W
FOR STANDARD PARTS REFER TO **CATALOG** 967-0423 **KEY NO.** -
OPTIONAL GROUPS IN CATALOG ARE LISTED BY GROUP NO. BELOW WHEN USED.

PART NO.	QTY.	DESCRIPTION	PART NO.	QTY.	DESCRIPTION
		Flywheel Alternator - 12 Volt (Wico)			
		Low Oil Pressure Cut Off			
		High Air Temperature Cut Off			
134-2255	1	Housing, Blower			

SPECIAL PARTS LIST FOR MODEL DJBA-MS SPEC 3661W
 FOR STANDARD PARTS REFER TO CATALOG 967-0423 KEY NO. -
 OPTIONAL GROUPS IN CATALOG ARE LISTED BY GROUP NO. BELOW WHEN USED.

PART NO.	QTY.	DESCRIPTION	PART NO.	QTY.	DESCRIPTION
Flywheel Alternator - 12 Volt (Wico) Variable Speed Governor Control (1,200 To 2,400 RPM) Control (Engine) Air Outlet Duct					
110-2941	1	Head, Cylinder (Refer To Standard Cylinder Head For Components, Except Parts Marked *)			
110-1870	2	*Guide, Valve - Exhaust			
110-1869	2	*Guide, Valve - Intake			
509-0132	2	Seal, Oil - Intake Valve			
110-1871	2	Valve, Intake			
150-1697	1	Bracket, Governor Adjusting			
150-1702	1	Bracket, Governor Mounting			
134-2253	1	Housing, Blower			

SPECIAL PARTS LIST FOR MODEL DJBA-MS SPEC 3690W
 FOR STANDARD PARTS REFER TO CATALOG 967-0423 KEY NO. -
 OPTIONAL GROUPS IN CATALOG ARE LISTED BY GROUP NO. BELOW WHEN USED.

PART NO.	QTY.	DESCRIPTION	PART NO.	QTY.	DESCRIPTION
Flywheel Alternator - 12 Volt (Wico)					
Low Oil Pressure Cut Off					
Control (Engine)					
110-2941	1	Head, Cylinder (Refer To Standard Cylinder Head For Components, Except Parts Marked *)			
110-1870	2	*Guide, Valve - Exhaust			
110-1869	2	*Guide, Valve - Intake			
509-0132	2	Seal, Oil - Intake Valve			
110-1871	2	Valve, Intake			
134-2255	1	Housing, Blower			

SPECIAL PARTS LIST FOR MODEL DJBA-MS SPEC 3705W
 FOR STANDARD PARTS REFER TO CATALOG 967-0423 KEY NO. -
 OPTIONAL GROUPS IN CATALOG ARE LISTED BY GROUP NO. BELOW WHEN USED.

PART NO.	QTY.	DESCRIPTION	PART NO.	QTY.	DESCRIPTION
----------	------	-------------	----------	------	-------------

Flywheel Alternator - 12 Volt (Wico)
 Control (Engine)

110-2941	1	Head, Cylinder (Refer To Standard Cylinder Head For Components, Except Parts Marked *)
110-1870	2	*Guide, Valve - Exhaust
110-1869	2	*Guide, Valve - Intake
509-0132	2	Seal, Oil - Intake Valve
110-1871	2	Valve, Intake
134-2255	1	Housing, Blower
140-0645	1	Adapter, Remote Air Cleaner

Parts Not Furnished By Onan
 Air Cleaner

SPECIAL PARTS LIST FOR MODEL DJBA-MF SPEC 3732W
 FOR STANDARD PARTS REFER TO CATALOG 967-0423 KEY NO. -
 OPTIONAL GROUPS IN CATALOG ARE LISTED BY GROUP NO. BELOW WHEN USED.

PART NO.	QTY.	DESCRIPTION	PART NO.	QTY.	DESCRIPTION
Flywheel Alternator - 12 Volt (Wico) Low Oil Pressure Cut Off High Air Temperature Cut Off Clutch (Twin Disc) Control (Engine)					
110-2941	1	Head, Cylinder (Refer To Standard Cylinder Head For Components, Except Parts Marked *)			
110-1870	2	*Guide, Valve - Exhaust			
110-1869	2	*Guide, Valve - Intake			
509-0132	2	Seal, Oil - Intake Valve			
110-1871	2	Valve, Intake			
510-0046	5	Ball, Fly - Governor			
134-2255	1	Housing, Blower			

SPECIAL PARTS LIST FOR MODEL DJBA-MS SPEC 3732W
 FOR STANDARD PARTS REFER TO CATALOG 967-0423 KEY NO. -
 OPTIONAL GROUPS IN CATALOG ARE LISTED BY GROUP NO. BELOW WHEN USED.

PART NO.	QTY.	DESCRIPTION	PART NO.	QTY.	DESCRIPTION
Flywheel Alternator - 12 Volt (Wico)					
Low Oil Pressure Cut Off					
High Air Temperature Cut Off					
Control (Engine)					
110-2941	1	Head, Cylinder (Refer To Standard Cylinder Head For Components, Except Parts Marked *)			
110-1870	2	*Guide, Valve - Exhaust			
110-1869	2	*Guide, Valve - Intake			
509-0132	2	Seal, Oil - Intake Valve			
110-1871	2	Valve, Intake			
510-0046	5	Ball, Fly - Governor			
134-2255	1	Housing, Blower			
190-0251	1	Housing, Clutch			
515-0006	1	Key, Crankshaft Stub			
190-0253	1	Flange, Clutch Adapter			
190-0254	1	Washer, Flat - Clutch Adapter			

SPECIAL PARTS LIST FOR **MODEL** DJBA-MS **SPEC** 3750W
 FOR STANDARD PARTS REFER TO **CATALOG** 967-0423 **KEY NO.** -
 OPTIONAL GROUPS IN CATALOG ARE LISTED BY GROUP NO. BELOW WHEN USED.

PART NO.	QTY.	DESCRIPTION	PART NO.	QTY.	DESCRIPTION
Two Speed Governor Control (1,200 To 2,400 RPM)					
Low Oil Pressure Cut Off					
Flywheel Alternator (12 Volt, Wico)					
Control (Engine)					
110-2941	2	Head Assembly, Cylinder (Refer To Standard Cylinder Head For Components, Except Parts Marked *)			
110-1869	4	*Guide, Valve - Intake			
110-1870	4	*Guide, Valve - Exhaust			
509-0132	4	Seal, Oil - Intake Valve			
110-1871	4	Valve, Intake			
150-1697	1	Bracket, Governor Adjusting			
150-1702	1	Bracket, Governor Mounting			
134-2253	1	Housing, Blower			

SPECIAL PARTS LIST FOR **MODEL** DJBA-MS **SPEC** 3766W
 FOR STANDARD PARTS REFER TO **CATALOG** 967-0423 **KEY NO.** -
 OPTIONAL GROUPS IN CATALOG ARE LISTED BY GROUP NO. BELOW WHEN USED.

PART NO.	QTY.	DESCRIPTION	PART NO.	QTY.	DESCRIPTION
Two Speed Governor Control (1,200 To 2,500 RPM) Low Oil Pressure Cut Off Flywheel Alternator (12 Volt, Wico) Control (Engine)					
110-2941	2	Head Assembly, Cylinder (Refer To Standard Cylinder Head For Components, Except Parts Marked *)			
110-1869	4	*Guide, Valve - Intake			
110-1870	4	*Guide, Valve - Exhaust			
509-0132	4	Seal, Oil - Intake Valve			
110-1871	4	Valve, Intake			
134-1804	1	Duct, Air Outlet			
134-2253	1	Housing, Blower			

SPECIAL PARTS LIST FOR **MODEL** DJBA-MF **SPEC** 3772W
 FOR STANDARD PARTS REFER TO **CATALOG** 967-0423 **KEY NO.** -
 OPTIONAL GROUPS IN CATALOG ARE LISTED BY GROUP NO. BELOW WHEN USED.

PART NO.	QTY.	DESCRIPTION	PART NO.	QTY.	DESCRIPTION
----------	------	-------------	----------	------	-------------

Clutch (Twin Disc)
 Control (Engine)

110-2941	2	Head Assembly, Cylinder (Refer To Standard Cylinder Head For Components, Except Parts Marked *)
110-1869	4	*Guide, Valve - Intake
110-1870	4	*Guide, Valve - Exhaust
509-0132	4	Seal, Oil - Intake Valve
110-1871	4	Valve, Intake

SPECIAL PARTS LIST FOR MODEL DJBA-MF SPEC 3774W

FOR STANDARD PARTS REFER TO CATALOG 967-0423 KEY NO. -

OPTIONAL GROUPS IN CATALOG ARE LISTED BY GROUP NO. BELOW WHEN USED.

PART NO.	QTY.	DESCRIPTION	PART NO.	QTY.	DESCRIPTION
----------	------	-------------	----------	------	-------------

Clutch (Twin Disc)

Flywheel Alternator (12 Volt, Wico)

110-2941	2	Head Assembly, Cylinder (Refer To Standard Cylinder Head For Components, Except Parts Marked *)
110-1869	4	*Guide, Valve - Intake
110-1870	4	*Guide, Valve - Exhaust
509-0132	4	Seal, Oil - Intake Valve
110-1871	4	Valve, Intake
134-2255	1	Housing, Blower