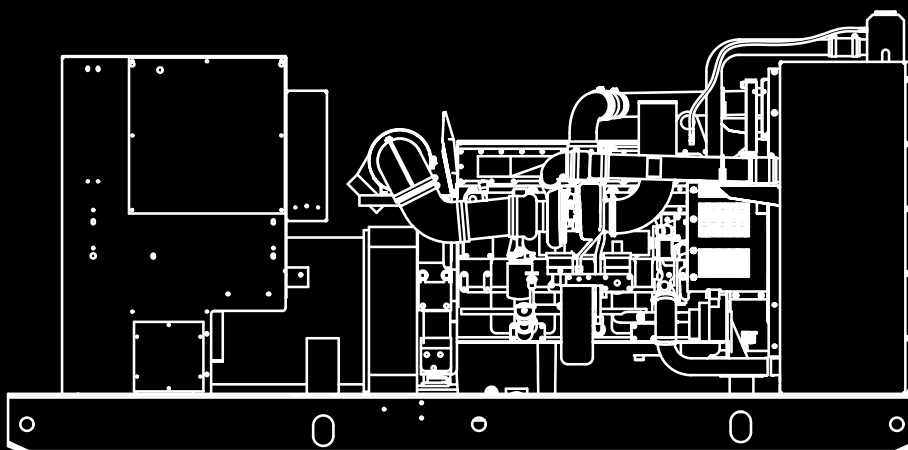


Caution: This document contains mixed page sizes (8.5 x 11 or 11 x 17), which may affect printing. Please adjust your printer settings according to the size of each page you wish to print.

Installation Manual

PowerCommand® Control
3100 Series
Generator Sets



Models
DQAD. DQAE. DQAF

Table of Contents

SECTION	TITLE	PAGE
	IMPORTANT SAFETY INSTRUCTIONS	iii
1	INTRODUCTION	
	About this Manual	1-1
	Installation Overview	1-2
2	SPECIFICATIONS	2-1
3	MOUNTING THE GENERATOR SET	
	General	3-1
	Location	3-1
	Mounting	3-2
	Access to Set	3-2
	Vibration Isolators	3-4
4	MECHANICAL CONNECTIONS	
	General	4-1
	Fuel System	4-1
	Exhaust System	4-4
	Ventilation and Cooling	4-6
5	DC CONTROL WIRING	
	Control Wiring	5-1
	TB1 Remote Monitor/Control Connections	5-1
	Run Relays (K11, K12, K13)	5-3
	Alarm Relay (K14)	5-4

California

Proposition 65 Warning

Diesel engine exhaust and some of its constituents are known to the State of California to cause cancer, birth defects, and other reproductive harm.

6	AC ELECTRICAL CONNECTIONS	
	General	6-1
	Transfer Switch	6-2
	AC Wiring	6-3
	Control Heater (Optional)	6-5
	Coolant Heater	6-6
	Generator Heater	6-7
	Fuel Transfer Pump	6-8
	Ground Fault Alarm Relay (Optional)	6-9
7	ENCLOSURE ELECTRICAL CONNECTIONS	
	General	7-1
	Optional AC Distribution Panel	7-2
	Optional Motorized Inlet/Outlet Louvers	7-3
	Optional Transfer Fuel Pump	7-4
8	PRESTART PREPARATION	
	General	8-1
	PCC Power On/Standby Mode	8-1
	Electrical System	8-2
	PCC Options Prestart Checks	8-3
	Starting	8-5
9	INSTALLATION CHECKLIST	
	General	9-1
	Generator Set Support	9-1
	Cooling Air Flow	9-1
	Diesel Fuel System	9-1
	Exhaust System	9-2
	AC and DC Wiring	9-2
	Genset Prestart	9-2
10	WIRING DIAGRAMS	
	General	10-1

IMPORTANT SAFETY INSTRUCTIONS

SAVE THESE INSTRUCTIONS – This manual contains important instructions that should be followed during installation and maintenance of the generator and batteries.

Before operating the generator set (genset), read the Operator's Manual and become familiar with it and the equipment. **Safe and efficient operation can be achieved only if the equipment is properly operated and maintained.** Many accidents are caused by failure to follow fundamental rules and precautions.

The following symbols, found throughout this manual, alert you to potentially dangerous conditions to the operator, service personnel, or the equipment.

⚠ DANGER *This symbol warns of immediate hazards which will result in severe personal injury or death.*

⚠ WARNING *This symbol refers to a hazard or unsafe practice which can result in severe personal injury or death.*

⚠ CAUTION *This symbol refers to a hazard or unsafe practice which can result in personal injury or product or property damage.*

FUEL AND FUMES ARE FLAMMABLE

Fire, explosion, and personal injury or death can result from improper practices.

- DO NOT fill fuel tanks while engine is running, unless tanks are outside the engine compartment. Fuel contact with hot engine or exhaust is a potential fire hazard.
- DO NOT permit any flame, cigarette, pilot light, spark, arcing equipment, or other ignition source near the generator set or fuel tank.
- Fuel lines must be adequately secured and free of leaks. Fuel connection at the engine should be made with an approved flexible line. Do not use zinc coated or copper fuel lines with diesel fuel.
- Be sure all fuel supplies have a positive shutoff valve.
- Be sure battery area has been well-ventilated prior to servicing near it. Lead-acid batteries emit a highly explosive hydrogen gas that can be ignited by arcing, sparking, smoking, etc.

EXHAUST GASES ARE DEADLY

- Provide an adequate exhaust system to properly expel discharged gases away from enclosed or sheltered areas and areas where individuals are likely to congregate. Visually and audibly inspect the exhaust daily for leaks per the maintenance schedule. Make sure that exhaust manifolds are secured and not warped. Do not use exhaust gases to heat a compartment.
- Be sure the unit is well ventilated.
- Engine exhaust and some of its constituents are known to the state of California to cause cancer, birth defects, and other reproductive harm.

MOVING PARTS CAN CAUSE SEVERE PERSONAL INJURY OR DEATH

- Keep your hands, clothing, and jewelry away from moving parts.
- Before starting work on the generator set, disconnect battery charger from its AC source, then disconnect starting batteries, negative (–) cable first. This will prevent accidental starting.
- Make sure that fasteners on the generator set are secure. Tighten supports and clamps, keep guards in position over fans, drive belts, etc.
- Do not wear loose clothing or jewelry in the vicinity of moving parts, or while working on electrical equipment. Loose clothing and jewelry can become caught in moving parts.
- If adjustment must be made while the unit is running, use extreme caution around hot manifolds, moving parts, etc.

DO NOT OPERATE IN FLAMMABLE AND EXPLOSIVE ENVIRONMENTS

Flammable vapor can cause an engine to overspeed and become difficult to stop, resulting in possible fire, explosion, severe personal injury and death. Do not operate a genset where a flammable vapor environment can be created by fuel spill, leak, etc., unless the genset is equipped with an automatic safety device to block the air intake and stop the engine. The owners and operators of the genset are solely responsible for operating the genset safely. Contact your authorized Cummins Power Generation distributor for more information.

ELECTRICAL SHOCK CAN CAUSE SEVERE PERSONAL INJURY OR DEATH

- Remove electric power before removing protective shields or touching electrical equipment. Use rubber insulative mats placed on dry wood platforms over floors that are metal or concrete when around electrical equipment. Do not wear damp clothing (particularly wet shoes) or allow skin surface to be damp when handling electrical equipment. Do not wear jewelry. Jewelry can short out electrical contacts and cause shock or burning.
- Use extreme caution when working on electrical components. High voltages can cause injury or death. DO NOT tamper with interlocks.
- Follow all applicable state and local electrical codes. Have all electrical installations performed by a qualified licensed electrician. Tag and lock open switches to avoid accidental closure.
- DO NOT CONNECT GENERATOR SET DIRECTLY TO ANY BUILDING ELECTRICAL SYSTEM. Hazardous voltages can flow from the generator set into the utility line. This creates a potential for electrocution or property damage. Connect only through an approved isolation switch or an approved paralleling device.

GENERAL SAFETY PRECAUTIONS

- Coolants under pressure have a higher boiling point than water. DO NOT open a radiator or heat exchanger pressure cap while the engine is running. Allow the generator set to cool and bleed the system pressure first.
- Used engine oils have been identified by some state or federal agencies as causing cancer or reproductive toxicity. When checking or changing engine oil, take care not to ingest, breathe the fumes, or contact used oil.
- Keep multi-class ABC fire extinguishers handy. Class A fires involve ordinary combustible materials such as wood and cloth; Class B fires, combustible and flammable liquid fuels and gaseous fuels; Class C fires, live electrical equipment. (ref. NFPA No. 10).
- Make sure that rags are not left on or near the engine.
- Make sure generator set is mounted in a manner to prevent combustible materials from accumulating under the unit.
- Remove all unnecessary grease and oil from the unit. Accumulated grease and oil can cause overheating and engine damage which present a potential fire hazard.
- Keep the generator set and the surrounding area clean and free from obstructions. Remove any debris from the set and keep the floor clean and dry.
- Do not work on this equipment when mentally or physically fatigued, or after consuming any alcohol or drug that makes the operation of equipment unsafe.
- Substances in exhaust gases have been identified by some state or federal agencies as causing cancer or reproductive toxicity. Take care not to breathe or ingest or come into contact with exhaust gases.
- Do not store any flammable liquids, such as fuel, cleaners, oil, etc., near the generator set. A fire or explosion could result.
- Wear hearing protection when going near an operating generator set.
- To prevent serious burns, avoid contact with hot metal parts such as radiator, turbo charger and exhaust system.

KEEP THIS MANUAL NEAR THE GENSET FOR EASY REFERENCE

1. Introduction

ABOUT THIS MANUAL

This manual provides installation instructions for the generator set models listed on the front cover. This manual includes the following information:

Mounting Recommendations - for fastening generator set to base and space requirements for normal operation and service.

Mechanical and Electrical Connections - covers most aspects of the generator set installation.

Optional Enclosure Electrical Connections - covers installation of enclosure optional features.

Prestart – checklist of items or procedures needed to prepare generator set for operation.

Initial Startup – test complete system to ensure proper installation, satisfactory performance, and safe operation. Refer to Operators Manual for troubleshooting information.

Installation Checklist – reference checks upon completion of installation.

This manual DOES NOT provide application information for selecting a generator set or designing the complete installation. If it is necessary to design the various integrated systems (fuel, exhaust, cooling, etc.), additional information is required. Review standard installation practices. For engineering data specific to the generator set, refer to the *Specification* and *Data Sheets*. For application information, refer to Application Manual T-030, "Liquid Cooled Generator Sets".

INSTALLATION OVERVIEW

These installation recommendations apply to typical installations with standard model generator sets. Whenever possible, these recommendations also cover factory designed options or modifications. However, because of the many variables in any installation, it is not possible to provide specific recommendations for every situation. If there are any questions not answered by this manual, contact your nearest Cummins Power Generation distributor for assistance.

Application and Installation

A standby power system must be carefully planned and correctly installed for proper operation. This involves two essential elements: application and installation.

Application (as it applies to generator set installations) refers to the design of the complete standby power system that usually includes power distribution equipment, transfer switches, ventilation equipment, mounting pads, and cooling, exhaust, and fuel systems. Each component must be correctly designed so the complete system will function as intended. Application and design is an engineering function generally done by specifying engineers or other trained specialists. Specifying engineers or other trained specialists are responsible for the design of the complete standby system and for selecting the materials and products required.

Installation refers to the actual set-up and assembly of the standby power system. The installers set up and connect the various components of the system as specified in the system design plan. The complexity of the standby system normally requires the special skills of qualified electricians, plumbers, sheetmetal workers, etc. to complete the various segments of the installation. This is necessary so all components are assembled using standard methods and practices.

Safety Considerations

The generator set has been carefully designed to provide safe and efficient service when properly

installed, maintained, and operated. However, the overall safety and reliability of the complete system is dependent on many factors outside the control of the generator set manufacturer. To avoid possible safety hazards, make all mechanical and electrical connections to the generator set exactly as specified in this manual. All systems external to the generator (fuel, exhaust, electrical, etc.) must comply with all applicable codes. Make certain all required inspections and tests have been completed and all code requirements have been satisfied before certifying the installation is complete and ready for service.

Standby Heating Devices

In accordance with NFPA 110, Cummins Power Generation recommends installing diesel standby generator sets (life safety systems) equipped with engine jacket water coolant heaters in locations where the minimum ambient temperature is above 40°F (4°C). NFPA also requires that the engine jacket water coolant be maintained at a minimum of 90°F (32°C) and, for most applications, accept the emergency load in 10 seconds or less. Although most Cummins Power Generation generator sets will start in temperatures down to -25°F (-32°C) when equipped with engine jacket water coolant heaters, it might take more than 10 seconds to warm the engine up before a load can be applied when ambient temperatures are below 40°F (4°C).

The **LOW COOLANT TEMP (Code 210)** message, in conjunction with illumination of the Warning LED, is provided to meet the requirements of NFPA 110. The engine cold sensing logic initiates a warning when the engine jacket water coolant temperature falls below 70°F (21°C). In applications where the ambient temperature falls below 40°F (4°C), a cold engine may be indicated even though the coolant heaters are connected. Under these conditions, although the generator set may start, it may not be able to accept load within 10 seconds. When this condition occurs, check the coolant heaters for proper operation. If the coolant heaters are operating properly, other precautions may be necessary to warm the engine before applying a load.

2. Specifications

MODEL	DQAD/DQAE/DQAF
Cummins Diesel Series	QSM11
Generator kW Rating	See Genset Nameplate for rating information.
Cooling System Capacity with Standard Radiator	10.5 Gal (40 L)
Oil Capacity*	9.7 Gal (36.7 L)
Engine Fuel Connection Inlet/Outlet Thread Size	Refer to Generator Outline Drawing
Fuel Flow Max. Fuel Inlet Pressure Max. Fuel Inlet Restriction Max. Fuel Return Restriction	10 PSI (69 kPa) 4 in. Hg. (13.5 kPa) 2.5 in. Hg. (8.5 kPa)
Exhaust Outlet Size Maximum Allowable Back Pres.	5 in. NPT 41 in. H ₂ O (10.2 kPa)
Electrical System Starting Voltage Battery Group Number Cold Cranking Amps (minimum) Cold Soak @ 0° F (-18° C)	24 Volts DC Two, 12 Volt 8D 900
* Refer to Cummins engine <i>Operation and Maintenance Manual</i> for lubricating oil recommendations/specifications.	

FUEL CONSUMPTION (STANDBY/FULL LOAD/60Hz)

MODEL	DQAD	DQAE	DQAF
US gph (L/hr)	17.3 (65.5)	19.4 (73.4)	21.4 (81.0)

THIS PAGE LEFT INTENTIONALLY BLANK

3. Mounting the Generator Set

GENERAL

Generator set installations must be engineered so the generator set will function properly under the expected load conditions. Use these instructions as a general guide only. Follow the instructions of the consulting engineer when locating or installing any components. The complete installation must comply with all local and state building codes, fire ordinances, and other applicable regulations. Consider these requirements before installation:

Requirements to be considered prior to installation:

- Level mounting surface
- Adequate cooling air
- Adequate fresh induction air
- Discharge of generator set air
- Non-combustible mounting surface.

- Discharge of exhaust gases
- Electrical connections
- Accessibility for operation and servicing
- Noise levels
- Vibration isolation

LOCATION

Generator set location is decided mainly by related systems such as ventilation, wiring, fuel, and exhaust. The set should be located as near as possible to the main power service entrance. Exhaust must not be able to enter or accumulate around inhabited areas.

Provide a location away from extreme ambient temperatures and protect the generator set from adverse weather conditions.

WARNING

INCORRECT INSTALLATION, SERVICE OR PARTS REPLACEMENT CAN RESULT IN SEVERE PERSONAL INJURY, DEATH, AND/OR EQUIPMENT DAMAGE. SERVICE PERSONNEL MUST BE TRAINED AND EXPERIENCED TO PERFORM ELECTRICAL AND MECHANICAL COMPONENT INSTALLATION.

IMPORTANT

DEPENDING ON YOUR LOCATION AND INTENDED USE, FEDERAL, STATE OR LOCAL LAWS AND REGULATIONS MAY REQUIRE YOU TO OBTAIN AN AIR QUALITY EMISSIONS PERMIT BEFORE BEGINNING INSTALLATION OF YOUR GENSET. BE SURE TO CONSULT LOCAL POLLUTION CONTROL OR AIR QUALITY AUTHORITIES BEFORE COMPLETING YOUR CONSTRUCTION PLANS.

MOUNTING

Generator sets are mounted on a steel skid or fuel tank that provides proper support. The engine-generator assembly is isolated from the skid frame by rubber mounts that provide adequate vibration isolation for normal installations. Where required by building codes or special isolation needs, generator sets may be mounted on rubber pads or mechanical spring isolators. The use of unapproved isolators may result in harmful resonances and may void the genset warranty.

For fuel tank mounted generator sets, it is required that the tank be mounted such that an air space is provided between the bottom of the tank and the floor underneath to reduce corrosion and permit visual inspections for leaks.

Mount the generator set on a substantial and level base such as a concrete pad. A non-combustible material must be used for the pad.

Use 5/8 inch or 16 mm anchored mounting bolts to secure the vibration isolators to the base. Secure the vibration isolators using flat or bevel washer and hexagonal nut for each bolt (see Figure 3-1). The 1-1/2 x 6 inch pipe inserted over the mounting bolts allows minor adjustment of the bolts to align them to the holes in the subbase or vibration isolator.

Locate the isolators as shown on the generator set *Outline Drawing* referenced in the *Data Sheet*.

ACCESS TO SET

Generally, at least 1 meter (3 feet) of clearance should be provided on all sides of the generator set for maintenance and service access. A raised foundation or slab of 150 mm (6 inches) or more above floor level will make servicing easier.

Lighting should be adequate for operation, maintenance and service operations and should be connected on the load side of the transfer switch so that it is available at all times.

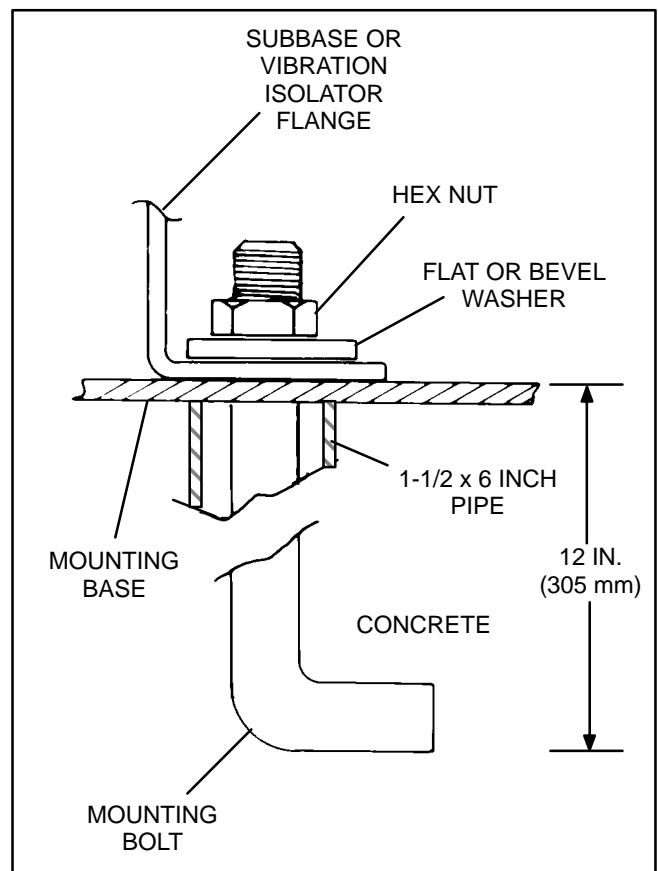


FIGURE 3-1. BOLT DIAGRAM

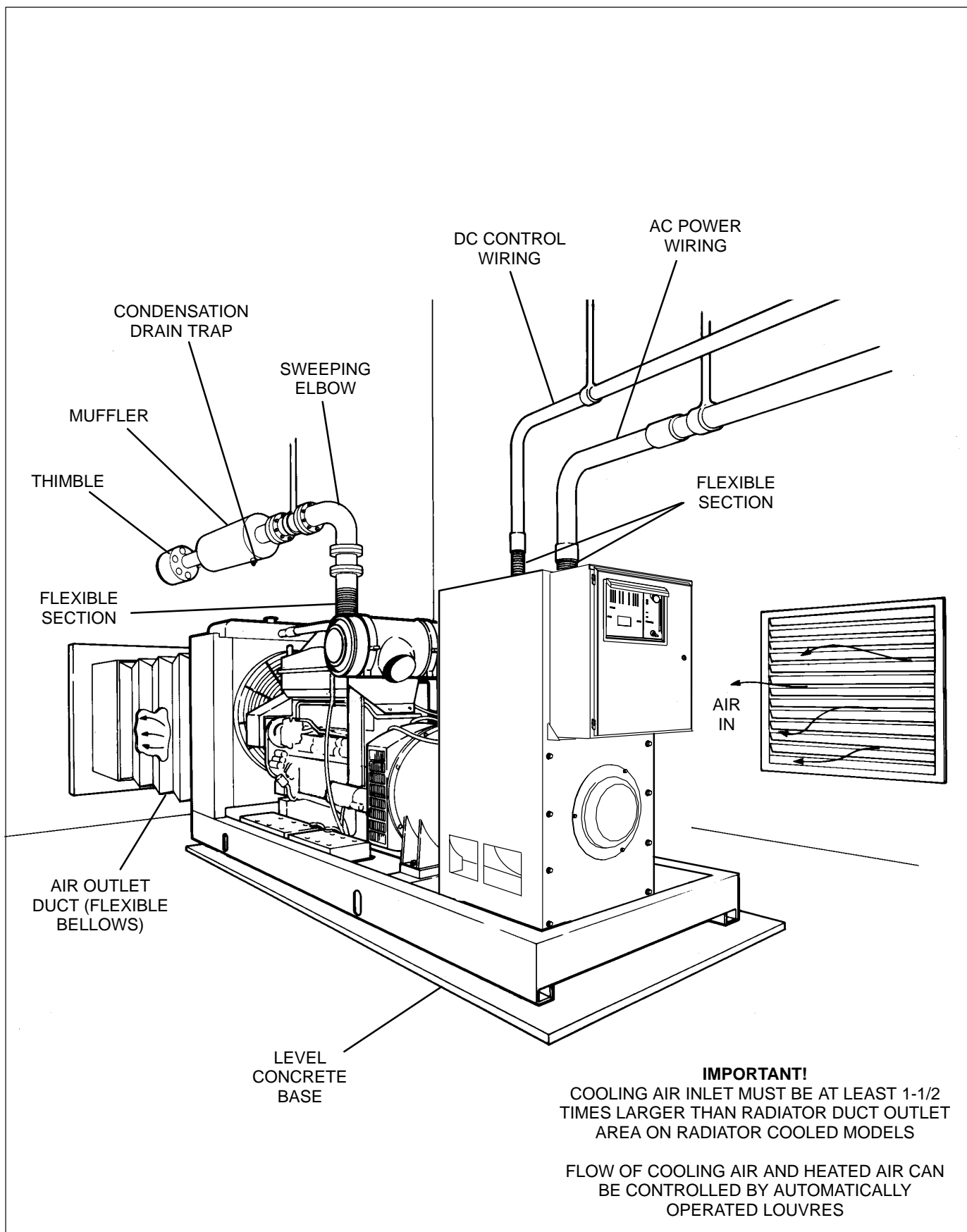


FIGURE 3-2. TYPICAL INSTALLATION

VIBRATION ISOLATORS

Installation and Adjustment Procedure

1. Place the vibration isolators (Figure 3-3) on the genset support structure. The isolators should be shimmed or grouted to ensure that all of the isolator bases are within 0.25 inch (6 mm) elevation of each other. The surface that the isolator bases rest on must also be flat and level.
2. Loosen the side snubber lock nuts so that the top plate of the isolator is free to move vertically and horizontally. Be sure that the top plate is correctly aligned with the base and springs.
3. Place the genset onto the isolators while aligning the skid's mounting with the threaded isolator hole. The top plates will move down and approach the base of the isolator as load is applied.
4. Once the genset is in position, the isolators may require adjusting so that the set is level.

The isolators are adjusted by inserting the leveling bolt through the skid and into the isolator (the leveling bolt's locking nut should be threaded up towards the bolt head).

The leveling bolt will adjust the clearance between the top plate and the isolator base. A nominal clearance of 0.25 inch (6 mm) or greater is desired. This will provide sufficient clearance for the rocking that occurs during startup and shutdown. If the 0.25 inch (6 mm) clearance is not present, turn the leveling bolt until the desired clearance is achieved.

5. The genset may not be level yet; therefore, adjust the leveling bolts until the set is level and sufficient clearance still remains. (Clearance on all isolators should be roughly equal). Once all isolators have been set, lock the leveling bolt in place with the lock nut.
6. The snubber nuts may remain loose and therefore provide better isolation between the genset and support structure.

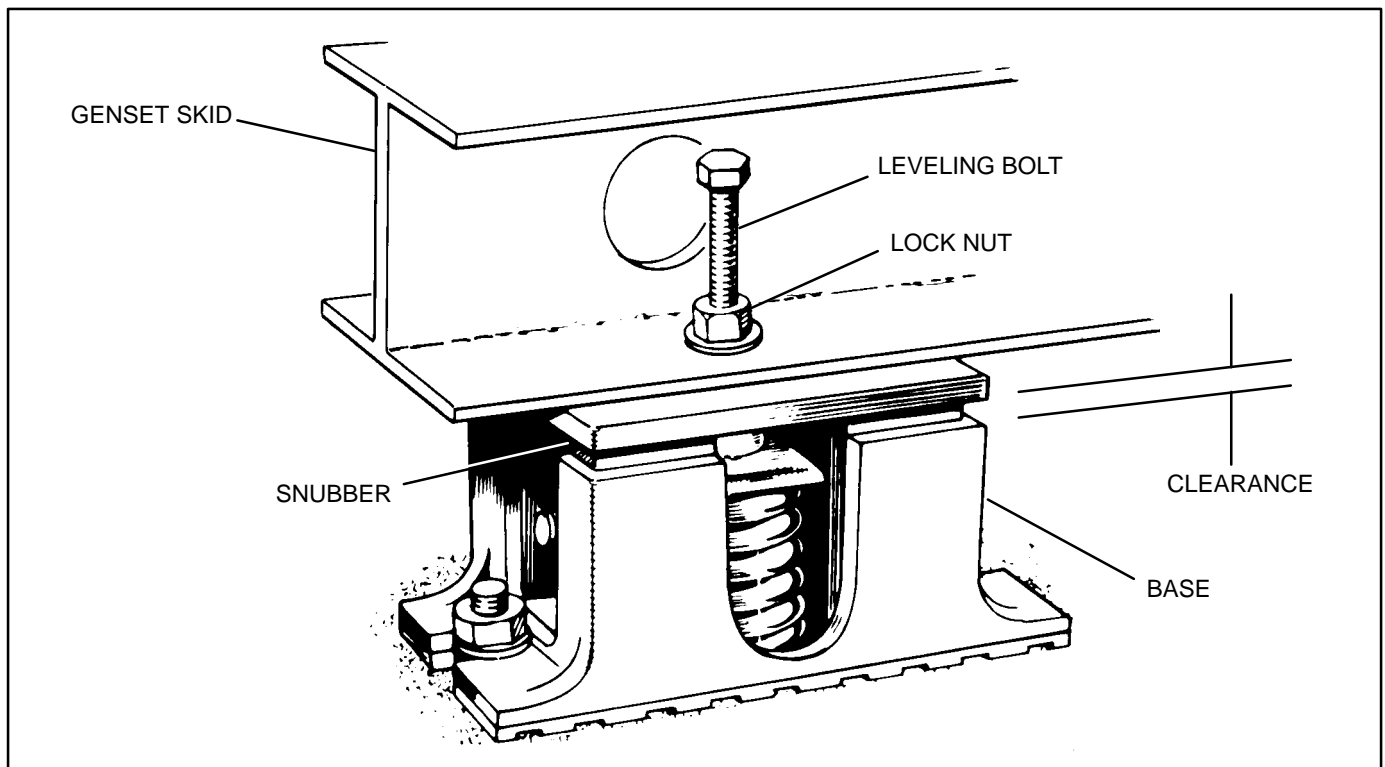


FIGURE 3-3. VIBRATION ISOLATORS

4. Mechanical Connections

GENERAL

The generator set mechanical system installation includes connecting the fuel, exhaust, ventilation and cooling systems. Before starting any type of fuel installation, all pertinent state and local codes must be complied with and the installation must be inspected before the unit is put in service.

FUEL SYSTEM

Cummins engines normally use ASTM No. 2 diesel fuel. They will, however, operate on alternate diesel fuels within the specifications shown in the Cummins engine *Operation and Maintenance Manual*.

In all fuel system installations, cleanliness is of the upmost importance. Make every effort to prevent entrance of moisture, dirt or contaminants of any kind into the fuel system. Clean all fuel system components before installing.

A fuel filter/strainer/water separator of 100-120 mesh or equivalent (approximately 150 microns nominal) must be fitted between either the main tank and day tank or between the main tank and the engine.

Use only compatible metal fuel lines to avoid electrolysis when fuel lines must be buried. Buried fuel lines must be protected from corrosion.

⚠ CAUTION *Never use galvanized or copper fuel lines, fittings or fuel tanks. Condensation in the tank and lines combines with the sulfur in diesel fuel to produce sulfuric acid. The molecular structure of the copper or galvanized lines or tanks reacts with the acid and contaminates the fuel.*

An electric solenoid valve in the supply line is recommended for all installations and required for indoor automatic or remote starting installations. Connect the solenoid wires to the genset "Switched B+" circuit to open the valve during generator set operation.

Separate fuel return lines to the day tank or supply tank must be provided for each generator set in a multiple-set installation to prevent the return lines of idle sets from being pressurized. Fuel return lines must not contain a shutoff device. Engine damage will occur if the engine is run with the return fuel lines blocked or restricted.

⚠ CAUTION *Never install shutoff device in fuel return line(s). If fuel return line(s) is blocked or exceeds fuel restriction limit, engine damage will occur.*

Fuel Return Restriction (or Pressure) Limit: Fuel return drain restriction (consisting of friction head and static head) between the engine injector return line connection and the fuel tank must not exceed the limit stated in the *Specification* section.

Fuel Lines – Routing

A flexible fuel hose(s) or section of flexible fuel hose(s) must be used between the engine's fuel system and fuel supply and return line(s) to protect the fuel system from damage caused by vibration, expansion and contraction. Flexible lines for connecting between the engine and the stationary fuel lines are supplied as standard equipment.

Installation of the fuel hose must be done according to all applicable codes and standards, and installation recommendations provided by the manufacturer. The supplied flexible hose is approved by the

Engine Fuel Connections

Identification tags are attached to the fuel supply line and fuel return line connections.

Supply Tank

Locate the fuel tank as close as possible to the generator set and within the restriction limitations of the fuel pump.

Install a fuel tank that has sufficient capacity to supply the genset operating continuously at full rated load for the planned period of operation or power outage. Refer to the *Specification* section for fuel consumption data.

⚠ WARNING *Fuel leaks create fire and explosion hazards which can result in severe personal injury or death. Always use flexible tubing between engine and fuel supply and return to avoid line failure and leaks due to vibration. The fuel system must meet applicable codes.*

If the fuel inlet restriction exceeds the defined limit due to the distance/customer-supplied plumbing

hose manufacture for use with the genset fuel type and product application.

Support fuel lines to restrain movement and prevent chaffing or contact with sharp edges, electrical wiring and hot exhaust parts.

⚠ WARNING *Sparks and hot surfaces can ignite fuel, leading to severe personal injury or death. Do not route fuel lines near electrical wiring or hot exhaust parts.*

Fuel lines must be routed and secured to maintain a 1/2 inch (12.7 mm) minimum clearance from electrical wiring and a 2 inch (51 mm) minimum clearance from hot exhaust parts.

between the genset and the main fuel tank, a transfer tank (referred to as a day tank) and auxiliary pump will also be required. If an overhead main fuel tank is installed, a transfer tank and float valve will be required to prevent fuel head pressures from being placed on the fuel system components.

For critical start applications, where generator sets are paralleled or must satisfy emergency start-time requirements, it is recommended that a fuel tank or reservoir be located such that the lowest possible fuel level is not less than 6 inches (150 mm) above the fuel pump inlet. This will prevent air from accumulating in the fuel line while the set is in standby, eliminating the period during startup when it has to be purged.

Fuel Inlet Pressure/Restriction Limit:: Engine performance and fuel system durability will be compromised if the fuel inlet pressure or restriction limits are not adhered to. Fuel inlet pressure or restriction must not exceed the limits stated in the *Specification* section.

Day Tank (If Used)

Fuel day tanks are used when fuel inlet restriction limits can not be met, or the supply tank is overhead and presents problems of high fuel head pressure for the fuel inlet and return lines.

Supply Tank Lower Than Engine: With this installation, the day tank is installed near the generator set, below the fuel injection system and within the fuel inlet restriction limit. Install an auxiliary fuel pump, to pump fuel from the supply tank to the day tank. A float switch in the day tank controls operation of the auxiliary fuel pump.

The supply tank top must be below the day tank top to prevent siphoning from the fuel supply to the day tank.

Provide a return line from the engine injection system return connection to the day tank. Plumb the re-

turn line to the bottom of day tank as shown in Figure 4-1. Provide a day tank overflow line to the supply tank in case the float switch fails to shut off the fuel transfer pump. Also, the overflow line should be one pipe diameter larger than the supply line.

⚠ WARNING *Spilled fuel presents the hazard of fire or explosion which can result in severe personal injury or death. Provide an overflow line to the supply tank from the day tank.*

Supply Tank Higher Than Engine: Install the day tank near the generator set, but below the fuel injection system. Use fuel line at least as large as the fuel pump inlet. The engine fuel return line must enter the day tank.

Include a shutoff valve in the fuel line between the fuel supply tank and the day tank to stop fuel flow when the generator set is off.

⚠ WARNING *Spilled fuel can create environmental hazards. Check local requirements for containment and prevention of draining to sewer and ground water.*

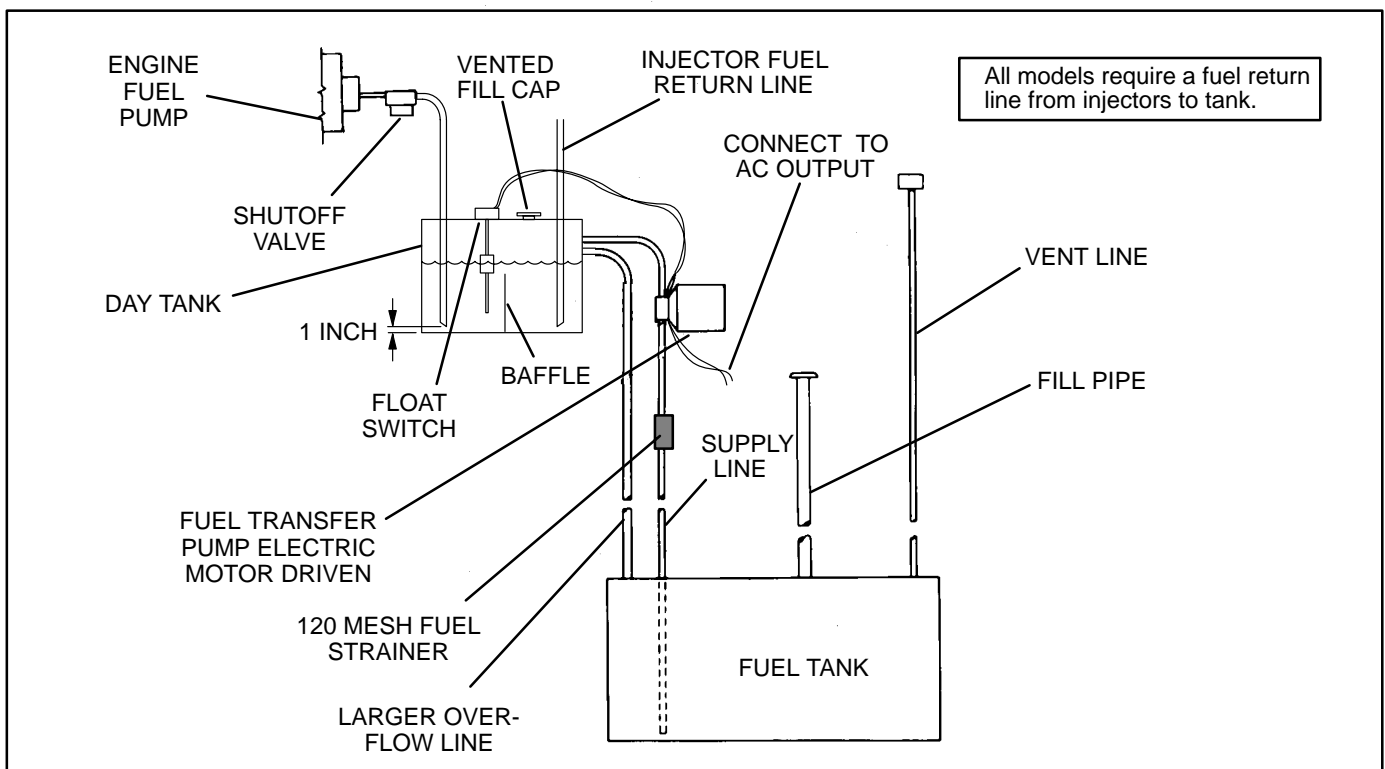


FIGURE 4-1 TYPICAL FUEL SUPPLY INSTALLATION

EXHAUST SYSTEM

Pipe exhaust gases to the outside of any enclosure. Locate the exhaust outlets away from any air inlets to avoid gases re-entering the enclosure. Exhaust installations are subject to various detrimental conditions such as extreme heat, infrequent operation and light loads. Regularly inspect the exhaust system both visually and audibly to see that the entire system remains fume tight and safe for operation.

⚠️WARNING *Inhalation of exhaust gases can result in severe personal injury or death. Use extreme care during installation to provide a tight exhaust system. Terminate exhaust pipe away from enclosed or sheltered areas, windows, doors and vents.*

For indoor installation, the exhaust system must use sealed joint type fittings, (for example NPT fittings) to provide a tighter exhaust system. Use of slip type fittings (secured with a muffler clamp) may allow leakage of exhaust gases into the building.

⚠️WARNING *Inhalation of exhaust gases can result in severe personal injury or death. Use extreme care during installation to provide a tight exhaust system. Use NPT or equivalent type fittings for all indoor installations.*

Use an approved thimble (Figure 4-2) where exhaust pipes pass through wall or partitions. Insulated wall/roof thimbles are used where exhaust pipes pass through a combustible roof or wall. This includes structures, such as wood framing or insulated steel decking, etc. Uninsulated wall/roof thimbles are used where exhaust pipes pass through a non-combustible wall or roof, such as concrete. Refer to NFPA 37, Section 6-3. "Stationary Combustion Engines and Gas Turbines" for ac-

cepted design practices. Build according to the code requirements in effect at the installation site.

⚠️WARNING *Hot exhaust pipes can start a fire and cause severe injury or death if improperly routed through walls. Use an approved thimble where exhaust pipes pass through walls or partitions.*

⚠️WARNING *Inhalation of exhaust gases can result in severe personal injury or death. Do not use exhaust heat to warm a room, compartment or storage area.*

Rain caps are available for the discharge end of vertical exhaust pipes. The rain cap clamps onto the end of the pipe and opens due to exhaust discharge force from the generator set. When the generator set is stopped, the rain cap automatically closes, protecting the exhaust system from rain, snow, etc.

Use a section of flexible exhaust pipe between the engine and remainder of exhaust system. Support exhaust system to prevent weight from being applied to engine exhaust outlet elbow/turbocharger connection.

⚠️CAUTION *Weight applied to the engine manifold can result in turbocharger damage. Support the muffler and exhaust piping so no weight or stress is applied to engine exhaust elbow.*

The exhaust system design should meet local code requirements.

Liability for injury, death, damage, and warranty expense due to use of unapproved mufflers or modifications to the exhaust system becomes the responsibility of the person installing the unapproved muffler or performing the modification. Contact a Cummins Power Generation distributor for approved exhaust system parts.

Avoid sharp bends by using sweeping, long radius elbows and provide adequate support for muffler and tailpipe. Pitch a horizontal run of exhaust pipe **DOWNWARD** (away from engine) to allow any moisture condensation to drain away from the engine. If an exhaust pipe must be turned upward, install a condensation trap at the point where the rise begins (Figure 4-3).

Shield or insulate exhaust lines if there is danger of personal contact. Allow at least 12 inches (305 mm) of clearance if the pipes pass close to a combustible wall or partition. Before installing insulation on exhaust system components, check the exhaust system for leaks while operating the genset under full load and correct all leaks.

⚠ WARNING *Exhaust pipes are very hot and they can cause severe personal injury or death from direct contact or from fire hazard. Shield or insulate exhaust pipes if there is danger of personal contact or when routed through walls or near other combustible materials.*

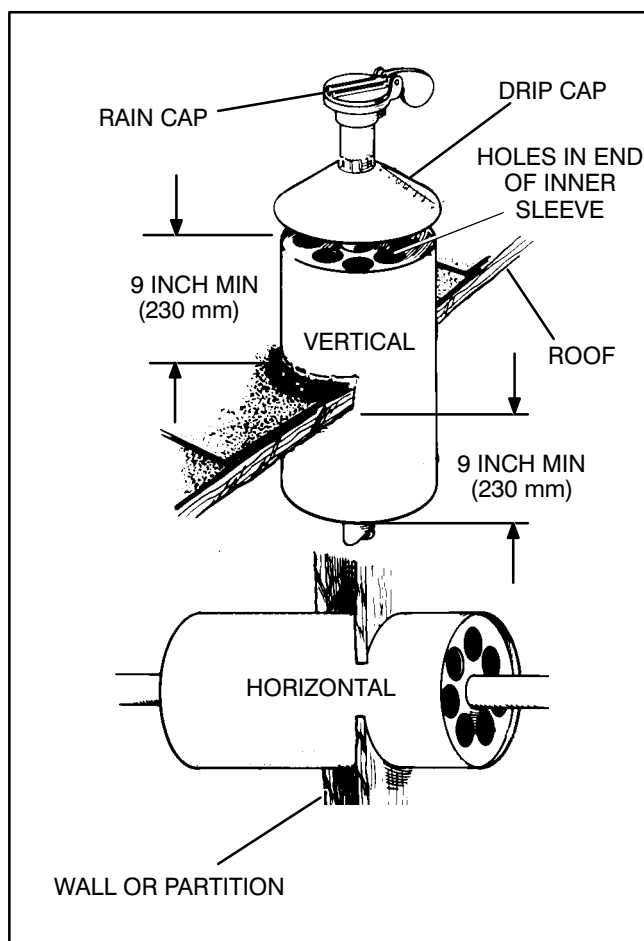


FIGURE 4-2. MOUNTING EXHAUST THIMBLE

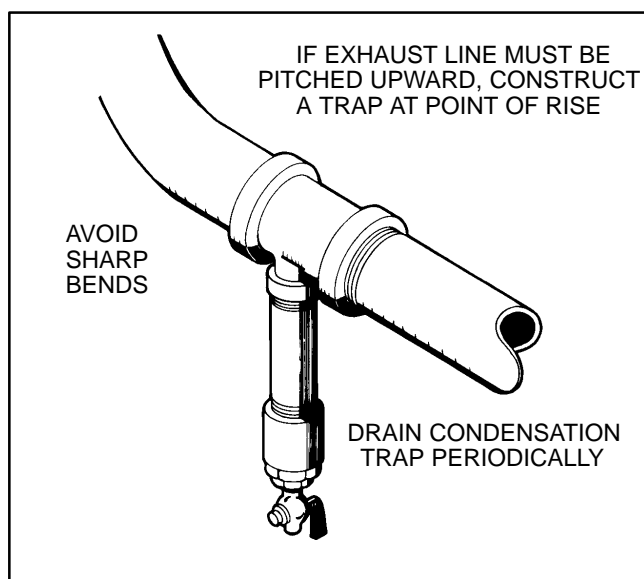


FIGURE 4-3. CONDENSATION TRAP

VENTILATION AND COOLING

Generator sets create considerable heat that must be removed by proper ventilation. Outdoor installations normally rely on natural air circulation but indoor installations need properly sized and positioned vents for required airflow.

Vents and Ducts

For indoor installations, locate vents so incoming air passes through the immediate area of the installation before exhausting. Install the air outlet higher than the air inlet to allow for convection air movement.

Size the vents and ducts so they are large enough to allow the required flow rate of air. The "free area" of ducts must be as large as the exposed area of the radiator. Refer to the model-specific Specification Sheet for the airflow requirements and allowed airflow restriction.

Wind will restrict free airflow if it blows directly into the air outlet vent. Locate the outlet vent so the effects of wind are eliminated. See Figure 4-4.

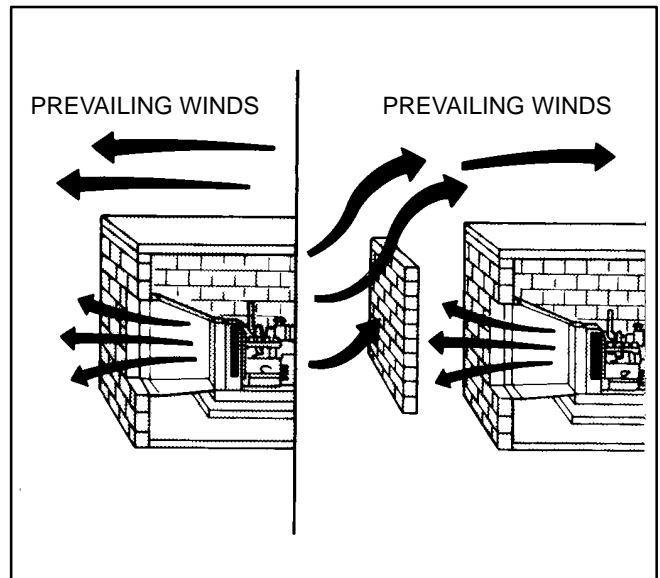


FIGURE 4-4. WIND BARRIER

Dampers

Dampers or louvers protect the genset and equipment room from the outside environment. Their operation of opening and closing should be controlled by operation of the genset.

In cooler climates movable or discharge dampers are used. These dampers allow the air to be recirculated back to the equipment room. This enables the equipment room to be heated while the genset engine is still cold, increasing the engine efficiency.

Radiator Set Requirements

Radiator set cooling air is drawn past the control end of the set by a pusher fan that blows air through the radiator (Figure 4-5). Locate the air inlet to the rear of the set. Make the inlet vent opening 1-1/2 to 2 times larger than the radiator area.

Louvers and screens over air inlet and outlet openings restrict air flow and vary widely in performance. A louver assembly with narrow vanes, for example, tends to be more restrictive than one with wide vanes. The effective open area specified by the louver or screen manufacturer should be used.

Locate the cooling air outlet directly in front of the radiator and as close as possible. The outlet opening must be at least as large as the radiator area. Length and shape of the air outlet duct should offer minimum restriction to airflow.

Attach a canvas or sheet metal duct to the flange and the air outlet opening using screws and nuts so duct can be removed for maintenance purposes. The duct prevents circulation of heated air. Before installing the duct, remove the radiator core guard.

Standard Radiator Cooling uses a set mounted radiator and engine pusher fan to cool the engine. Air travels from the generator end of the set, across the engine and out through the radiator. An integral discharge duct adapter flange surrounds the radiator grille.

Engine Coolant Heater (Optional)

An optional engine coolant heater is available to keep the engine warm for starting under adverse weather conditions. Connect the heater to a power source that will be energized when the engine is NOT running.

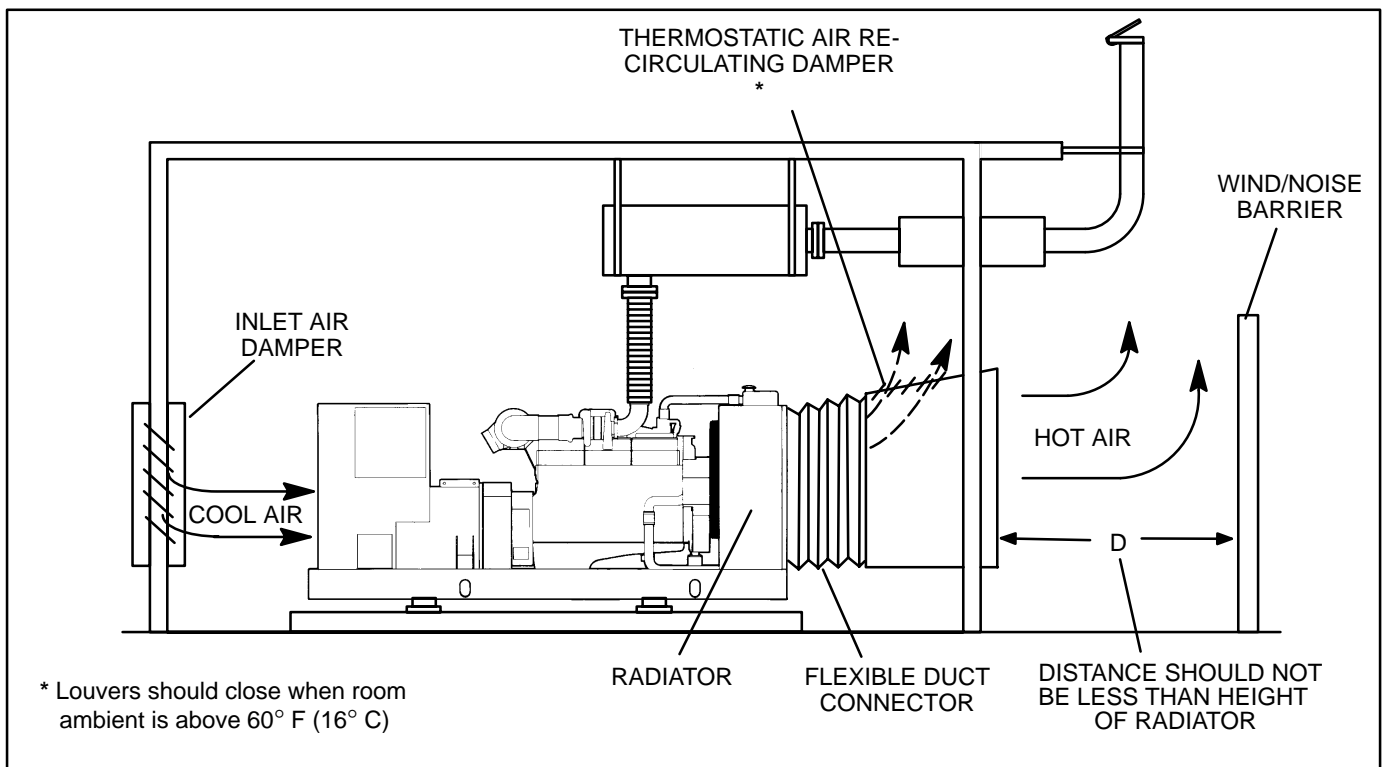


FIGURE 4-5. TYPICAL RADIATOR SET INSTALLATION

THIS PAGE LEFT INTENTIONALLY BLANK

5. DC Control Wiring

CONTROL WIRING

The generator set accessory box (Figure 5-1), which is located on the backside of the control housing, contains connection points for remote control and monitor options.

⚠ CAUTION *Stranded copper wire must be used for all customer connections to the Accessory Box. Solid copper wire may break due to genset vibration.*

TB1 REMOTE MONITOR/CONTROL CONNECTIONS

Customer monitor/control connections are attached to terminal block TB1 (Figure 5-1). Optional equipment such as sensing devices used to monitor genset operation, remote start/stop switches, control box heater, battery charger and etc. are attached to TB1. Refer to PCC Customer Connections diagram in Section 10.

TB1 Wiring

⚠ CAUTION *Always run control circuit wiring in a separate metal conduit from AC power cables to avoid inducing currents that could cause problems within the control.*

Digital Connections: Connection points, other than relayed outputs, network, switched B+ and B+ are considered digital connections to terminal strip TB1. The type/gauge wire to use for these connections are:

- Less than 1000 feet (305m), use 20 gauge stranded copper wire.
- 1000 to 2000 feet (305 to 610m), use 18 gauge stranded copper wire.

Relay Connections: Due to the wide variety of devices that can be attached to the relay outputs of TB1, the electrical contractor must determine the gauge of the **stranded copper** wire that is used at this installation site. Refer to Customer Connections diagram in Section 10 for the relay specifications.

Network Connections: Refer to 900-0366 *Power-Command Network Installation and Operation* manual for the type/gauge wire to use for these connections.

Switched B+: (Fused at 10 amps.) Same as Relay Connection description.

B+: (Fused at 20 amps.) Same as Relay Connection description.

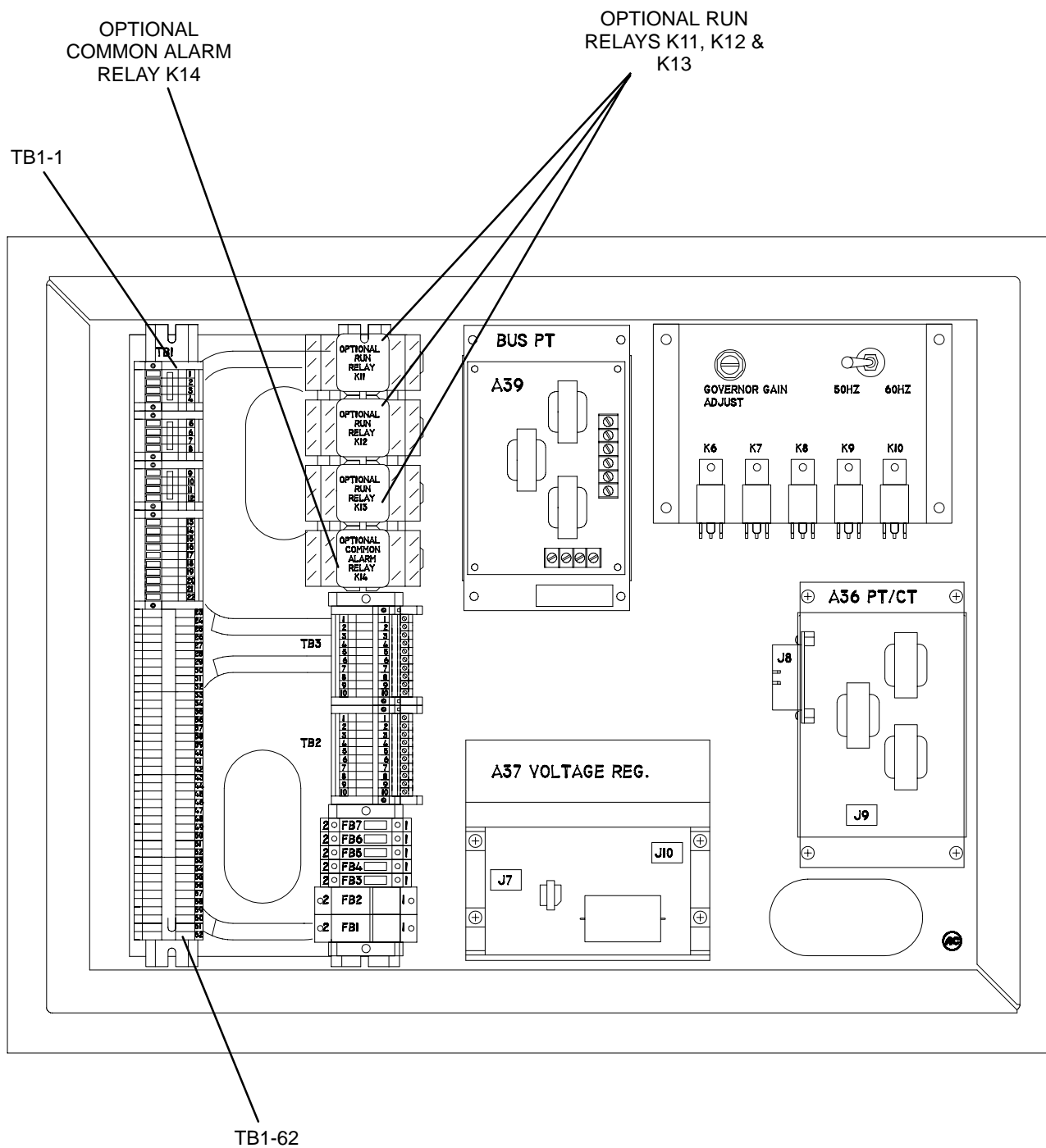


FIGURE 5-1. ACCESSORY BOX

RUN RELAYS (K11, K12, 13)

The optional run relays are rail mounted inside the accessory box (Figure 5-1). The rail mount allows you to easily remove and replace the snap-on relays. The generator set can be equipped with one, two or three run relays.

The three-pole, double-throw run relays (Figure 5-2) are used to control auxiliary equipment such as

fans, pumps and motorized air dampers. The run relays are energized when the generator set control receives a start signal.

The contacts are rated:

- 10 amps at 28 VDC or 120 VAC, 80%PF
- 6 amps at 240 VAC, 80%PF
- 3 amps at 480/600 VAC, 80%PF

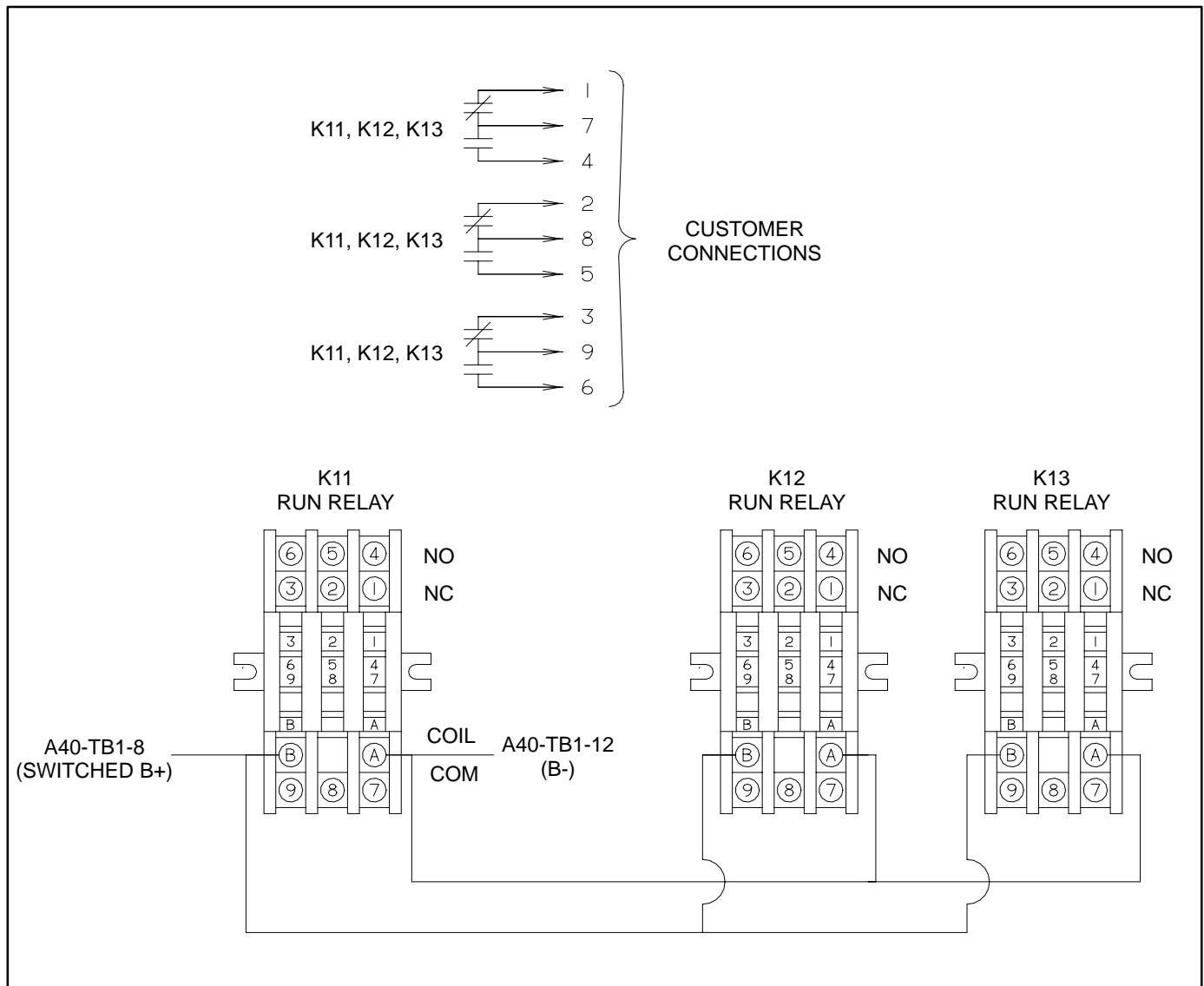


FIGURE 5-2. OPTIONAL RUN RELAYS (K11, K12, K13)

ALARM RELAY (K14)

The optional alarm relay is rail mounted inside the accessory box (Figure 5-1). The rail mount allows you to easily remove and replace the snap-on relay.

The three-pole, double-throw alarm relay (Figure 5-3) is often used to energize warning devices such

as audible alarms. Any generator set warning or shutdown will energize the alarm relay.

The contacts are rated:

- 10 amps at 28 VDC or 120 VAC, 80%PF
- 6 amps at 240 VAC, 80%PF
- 3 amps at 480/600 VAC, 80%PF

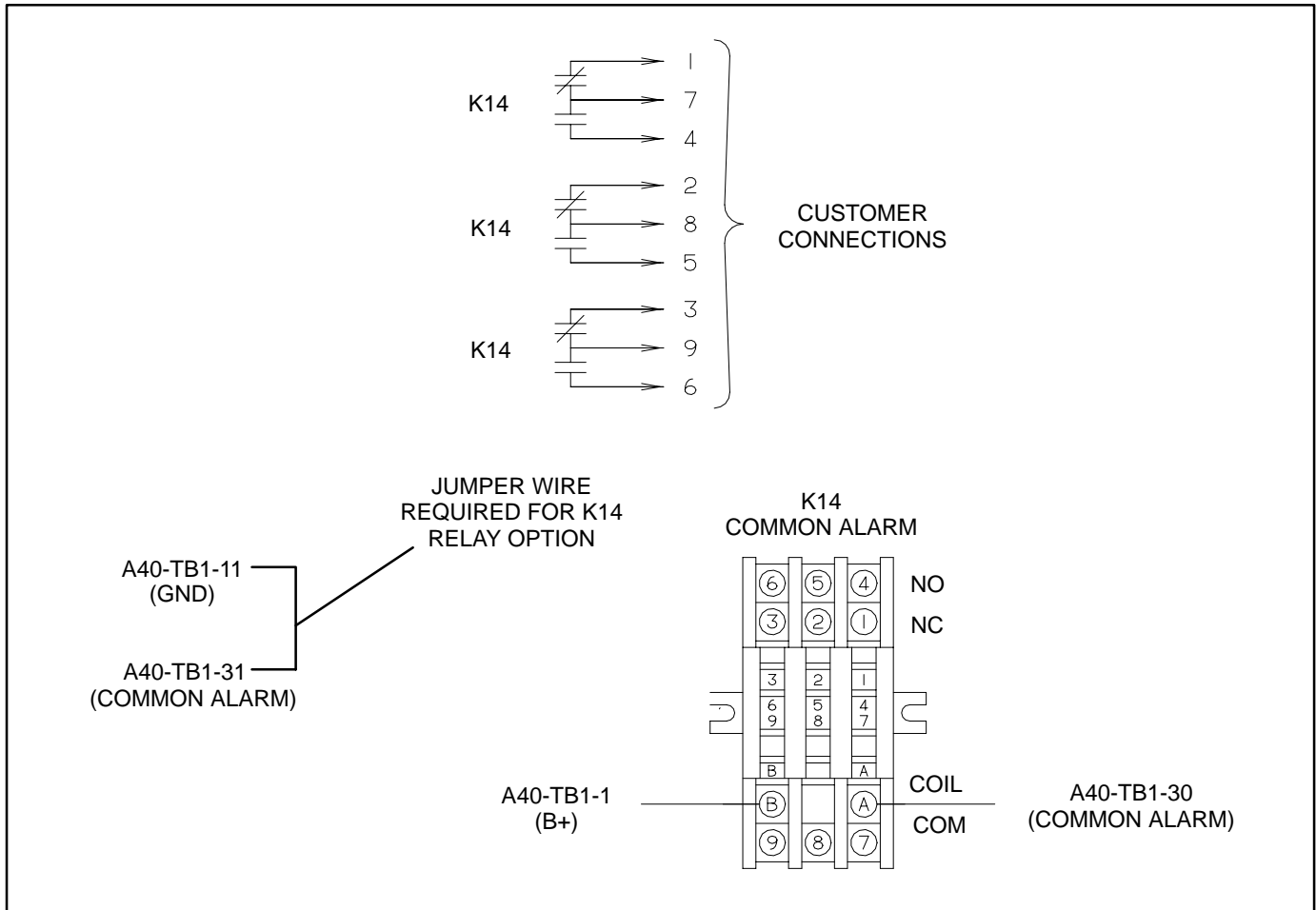


FIGURE 5-3. OPTIONAL ALARM RELAY (K14)

6. AC Electrical Connections

GENERAL

This section provides the procedure that is used to connect the AC electrical system of the genset.

⚠ CAUTION *Before disconnecting battery cable(s), press the Emergency Stop button and wait at least 30 seconds. Engine performance may be affected (e.g., engine dying or hard starting) if battery cable(s) is removed during the 30 second waiting period. Service personnel may be required to correct fault.*

⚠ WARNING *Ignition of explosive battery gases can cause severe personal injury or death. Arcing at battery terminals, light switch or other equipment, flame, pilot lights and sparks can ignite battery gas. Do not smoke, or switch trouble light ON or OFF near battery. Discharge static electricity from body before touching batteries by first touching a grounded metal surface.*

Ventilate battery area before working on or near battery—Wear goggles—Stop genset and disconnect charger before disconnecting battery cables—Disconnect negative (–) cable first and reconnect last.

⚠ CAUTION *Disconnect battery charger from AC source before disconnecting battery cables. Otherwise, disconnecting cables can result in voltage spikes damaging to DC control circuits of the set.*

⚠ WARNING *Accidental starting of the generator set can cause severe personal injury or death. Prevent accidental starting by disconnecting the negative (–) cable from the battery terminal.*

Before making any AC electrical connections, make certain the generator set cannot be accidentally started as follows:

1. Move the Run/Off/Auto switch on the control panel to the OFF position.

2. Press the Emergency Stop button and wait at least 30 seconds before completing Step 3.
3. Turn off or remove AC power from the battery charger.
4. Remove the negative (–) battery cable from the generator set starting battery.

Connecting the genset AC electrical system involves:

- Installation of transfer switch
- Generator output voltage selection
- Load cable connection
- Standard and optional AC equipment connections (e.g., control box heater, coolant heater, etc.
- Optional enclosure electrical connections (refer to Section 7).

Local regulations often require that wiring connections be made by a licensed electrician, and that the installation be inspected and approved before operation. All connections, wire sizes, materials used, etc. must conform to the requirements of electrical codes in effect at the installation site.

⚠ WARNING *Improper wiring can cause a fire or electrocution, resulting in severe personal injury or death and/or property and equipment damage.*

Before starting the genset, check to make sure that all electrical connections are secure, and that all wiring is complete. Replace and secure any access panels that have been removed during installation. Check that the load cables from the genset are properly connected.

⚠ WARNING *Backfeed to utility system can cause electrocution or property damage. Do not connect to any building electrical system except through an approved device and after building main switch is opened.*

TRANSFER SWITCH

If the installation is for standby service, a transfer switch must be used for switching the load from the normal power source to the genset (see Figure 6-1). Follow the installation instructions provided with the transfer switch when connecting the load and control wiring.

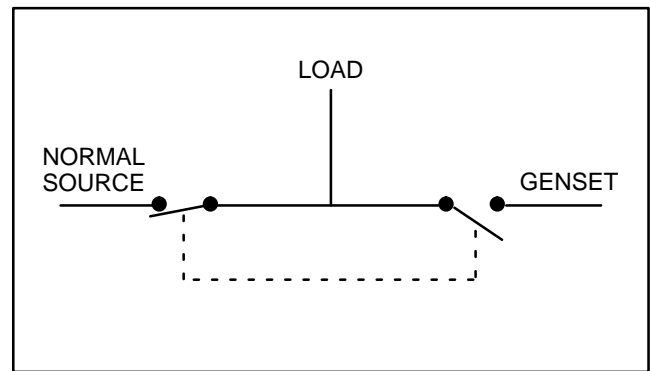


FIGURE 6-1. TYPICAL LOAD TRANSFER FUNCTION

AC WIRING

Generator Voltage Connections

The available generator output voltages and maximum current ratings are specified on the generator set nameplate. Line-to-neutral voltage is always the lower voltage shown and line-to-line voltage is the higher rating.

These generators can be configured to the nameplate voltages as shown on the Reconnection Diagram located on the side access cover of the control housing. Many of the voltages listed will require reconfiguration of the generator output leads on the connection terminal block. This reconfiguration must only be done by service personnel that are trained and experienced to perform electrical installation. The generator set was adjusted to produce a specified voltage during production verification testing prior to shipment. The installer must always check the stator lead terminal block connections and perform any necessary reconnect to obtain the voltage required.

Some generator sets are capable of producing a wide range of voltages and connection configurations, others have specific limited capabilities. Refer to wiring diagram and generator voltages (from the nameplate) when reviewing the voltage connection information and use the wiring diagram supplied with your generator set when actually performing load connections.

⚠ CAUTION *Reconfiguring generator sets to higher voltages can exceed the voltage capability of the specific generator windings and damage the generator and also decrease line current, rendering line circuit breakers too large. Consult with your distributor before performing reconnection for a different voltage.*

⚠ CAUTION *Reconfiguring generator sets to lower voltages can reduce generator set ratings, and also increase line current, rendering line circuit breakers too small. Consult with your distributor before performing reconnection for a different voltage.*

Load Connections

Flexible conduit and stranded conductors must be used for connections to take up movement of the generator set.

All loads are connected to the generator by bolting **stranded** load wires to the appropriate terminals on the generator reconnection terminal block or circuit breaker lugs. The terminals are stamped U, V, W and N to indicate the line and neutral connections. (Reference: U, V, and W correspond with L1, L2 and L3; and N with L0 respectively).

Load Balancing

When connecting loads to the generator set, balance the loads so the current flow from each line terminal (L1, L2 and L3) is about the same. This is especially important if both single phase and three phase loads are connected. Any combination of single phase and three phase loading can be used as long as each line current is about the same, within 10 percent of median value and no line current exceeds the nameplate rating of the generator. Check the current flow from each line after connections by observing the control panel ammeter.

Current Transformers

Current transformers (CT's) are required on gensets that contain AC meters. The CT's must be installed as noted in the following CT Installation Requirements.

Refer to the Reconnection Diagram to identify the output leads/phase that must be routed through each CT, and also appropriate transformer post selection for meter sensing leads. The transformers are labeled CT21, CT22 and CT23 on the reconnection wiring diagram. (The Reconnection Diagram is located on the upper side cover of the control housing.)

CT Installation Requirements:

- A. The CT has a dot on one side. This dot must be facing toward the generator (conventional current flowing into the dot). A dot is also used to indicate pin 1 of the CT.
- B. CT21 – U load leads (A phase),
CT22 – V load leads (B phase)
CT23 – W load leads (C phase)
- C. Route the appropriate load wires through each CT.
- D. The CT's have dual secondaries (3 pins). The CT secondary wire marked 1 is connected to pin 1 of the CT. CT secondary wire marked 2/3 is connected to pin 2 for high voltage gensets or to pin 3 for low voltage gensets. (Refer to Reconnection Diagram.)

Grounding

The following is a brief description of system and equipment grounding of permanently installed AC generators within a facility wiring system. It is important to follow the requirements of the local electrical code.

Figure 6-2 illustrates typical system grounding for a 3-pole and a 4-pole automatic transfer switch (ATS). In the 3-pole ATS, note that the generator neutral is connected to the ATS and is NOT bonded to ground at the generator. In the 4-pole ATS system, a grounding electrode conductor and a bonding jumper are used to connect the generator neutral to ground.

Make sure the genset is grounded to earth in one location only. On generators without a circuit breaker, ground to the point indicated on the top of the generator. On gensets with circuit breakers, use the ground lug provided in the circuit breaker box.

⚠WARNING *Electric current can cause severe personal injury or death. Bonding and grounding must be done properly. All metallic parts that could become energized under abnormal conditions must be properly grounded.*

Typical requirements for bonding and grounding are given in the National Electrical Code, Article 250. All connections, wire sizes, etc. must conform to the requirements of the electrical codes in effect at the installation site.

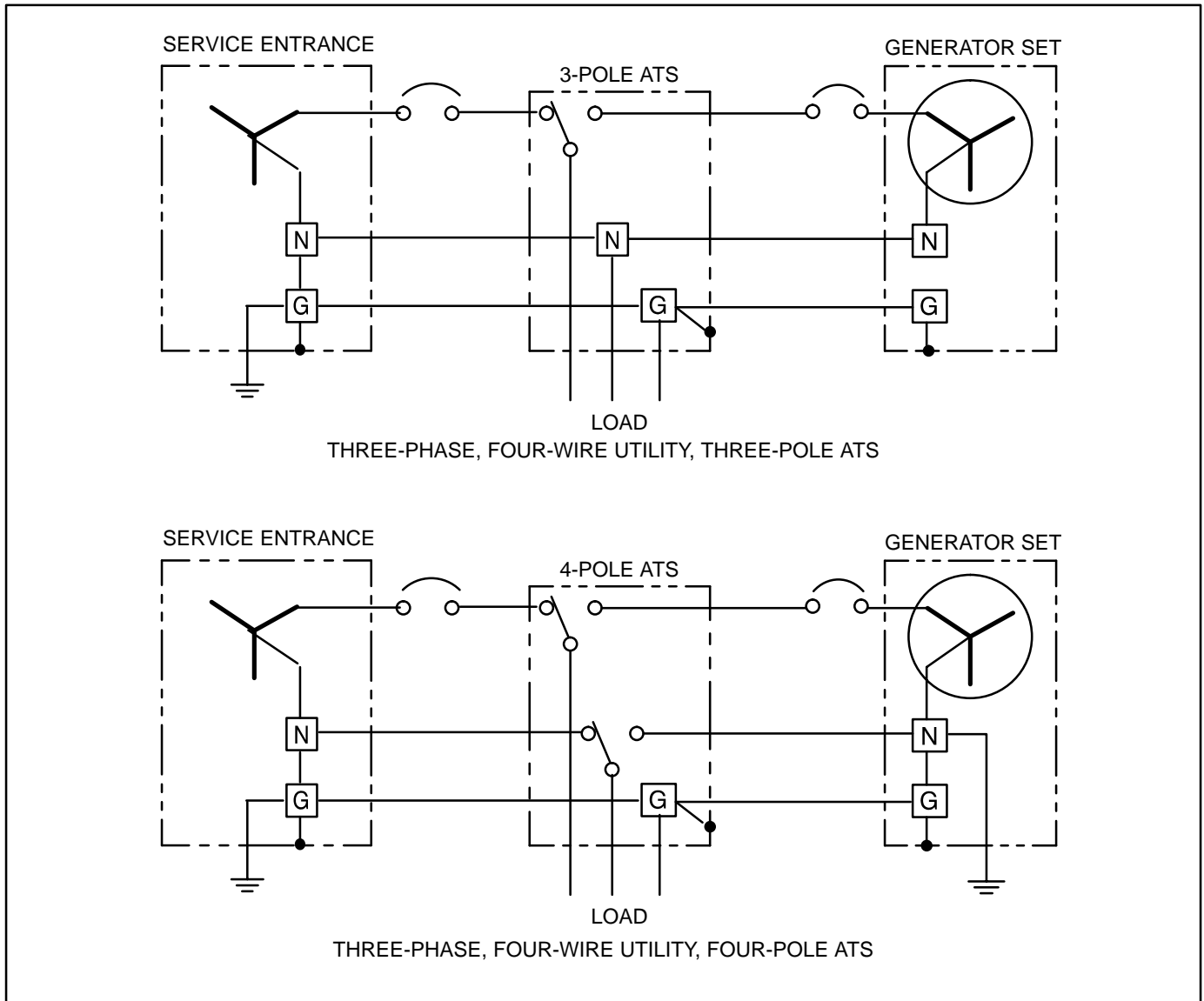


FIGURE 6-2. TYPICAL SYSTEM GROUNDING ONE-LINE DIAGRAMS

CONTROL HEATER (OPTIONAL)

A control heater (Figure 6-3) provides a means of humidity /temperature control of the control box in-

terior. It protects the components when the generator set is subjected to varying ambient air conditions during extended periods of non-use.

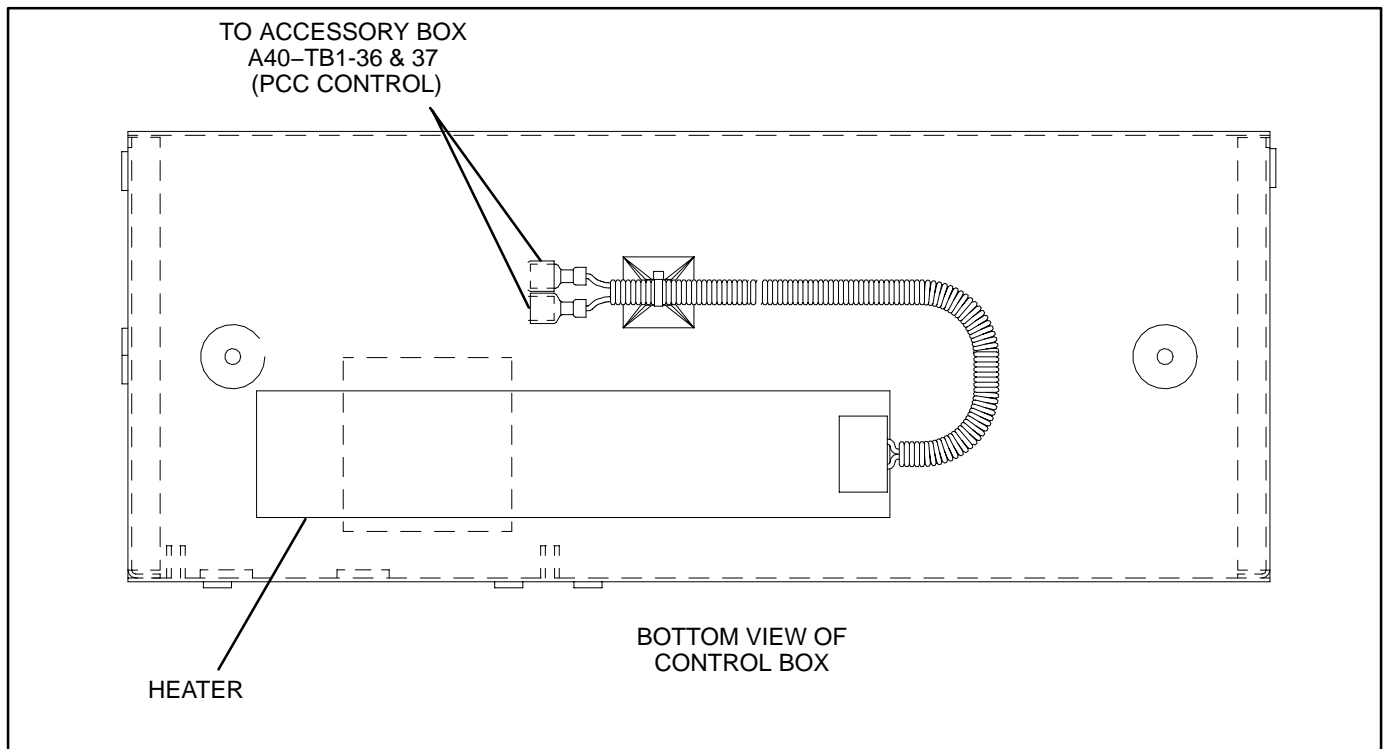


FIGURE 6-3. OPTIONAL CONTROL HEATER

COOLANT HEATER

The coolant heater keeps engine coolant warm when the engine is shut down. It heats and circulates the coolant within the engine. This reduces startup time and lessens engine wear caused by cold starts. It is electrically operated and thermostatically controlled.

⚠ CAUTION *The coolant heater must not be operated while the cooling system is empty or damage to the heater will occur.*

Figure 6-4 shows a typical coolant heater. Connect the heater to a source of power that will be on during the time the engine is not running. Be sure the sup-

ply voltage and circuit amperage is correct for the heater element rating.

Refer to the electrical diagram located inside the AC electrical connection box cover (Figure 6-4) for coolant heater power connections/voltage selections.

A battery charger is required to prevent battery discharge. The heater control relay draws 83 mA of current when the heater(s) is off. The heater is off when the engine has reached the proper temperature or the engine is running.

⚠ CAUTION *Do not connect AC power to the heater before connecting battery cables. Heater will run continuously without DC power and can overheat and damage heater.*

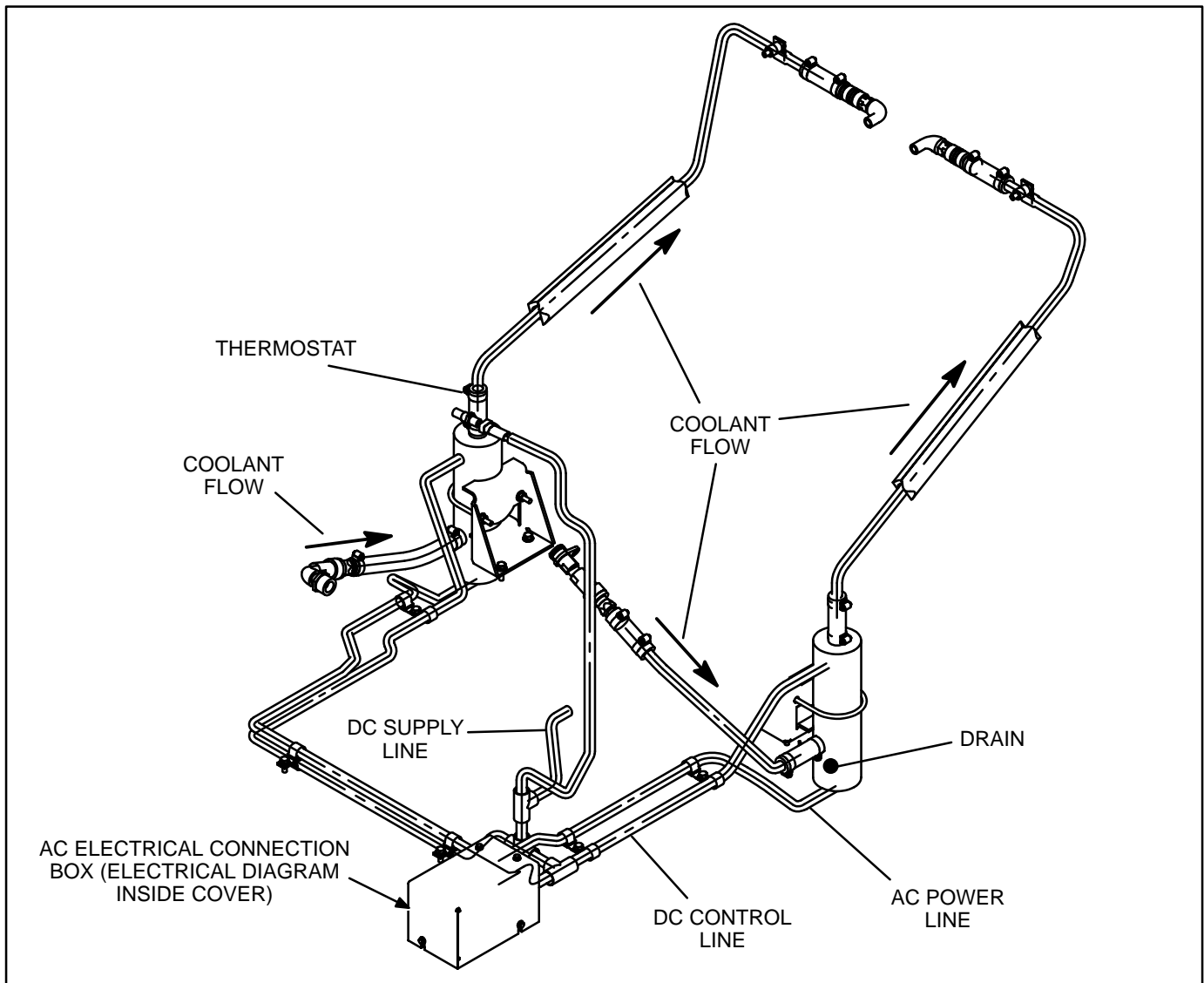


FIGURE 6-4. TYPICAL COOLANT HEATER

GENERATOR HEATER

A generator heater(s) is used to help keep the generator free of condensation when the generator set is not running. During cool and humid conditions, condensation can form within a generator, creating flashing and a shock hazard.

⚠ WARNING *Water or moisture inside a generator increases the possibility of flashing and electrical shock, which can cause equipment damage and severe personal injury or death. Do not use a generator which is not dry inside and out.*

Figure 6-5 illustrates the installation of two heater elements. Connect the heater(s) terminals to a source of power that will be on during the time the engine is not running. Be sure the supply voltage and circuit amperage is correct for the heater element rating.

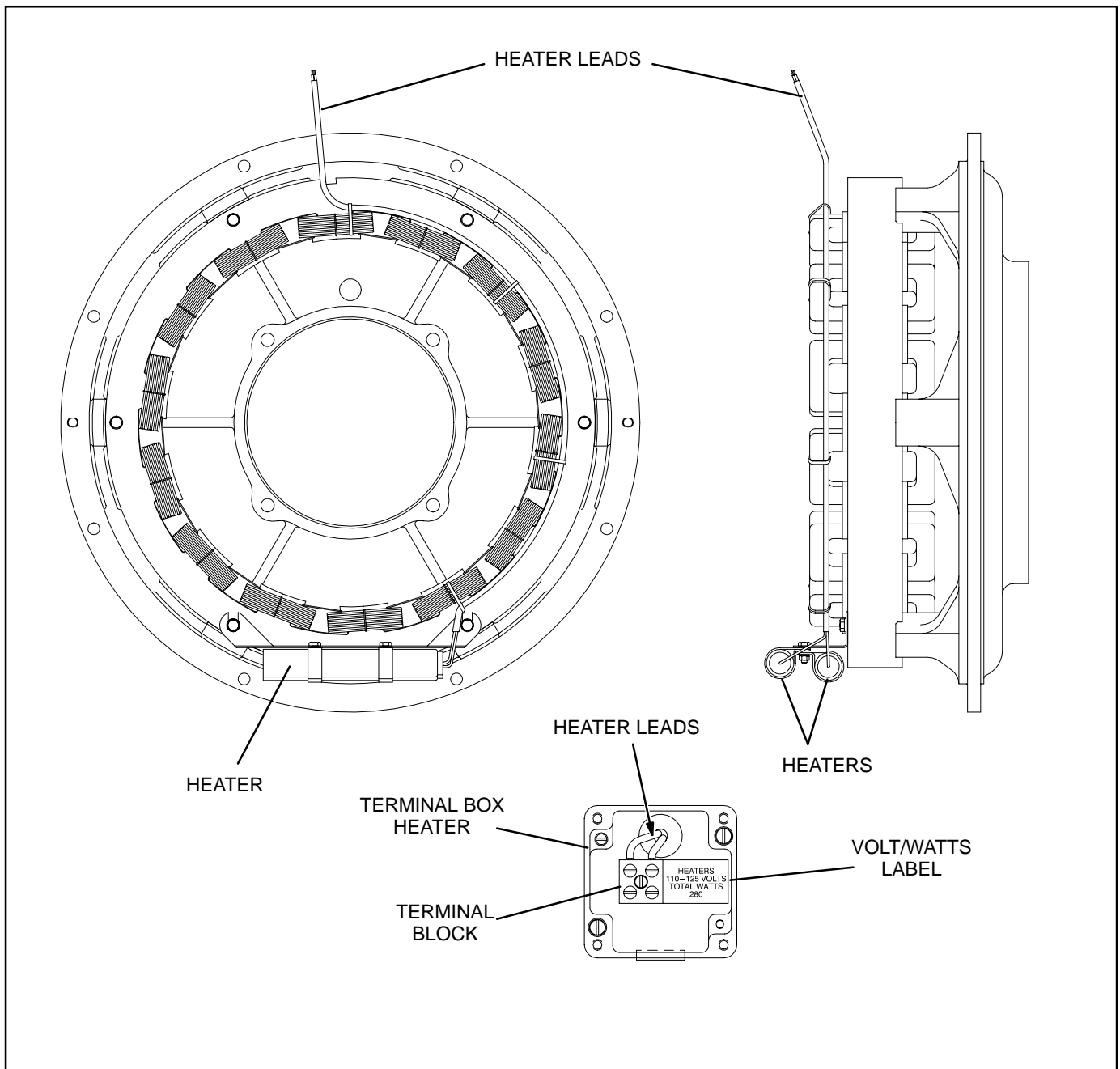


FIGURE 6-5. TYPICAL GENERATOR HEATER INSTALLATION

FUEL TRANSFER PUMP

A fuel transfer pump and control are available when a sub-base or in-skid day tank are provided. The automatic control operates the fuel pump to maintain a reservoir of fuel in the day tank.

⚠ WARNING Diesel fuel is highly combustible. Improper installation of this kit can lead to spillage of large quantities of fuel and loss of life and property if the fuel is accidentally ignited. Installation and service must be performed by trained and experienced persons in accordance with the applicable codes.

Do not smoke near fuel and keep flames, sparks, pilot lights, arcing switches and equipment, and other sources of ignition well away.

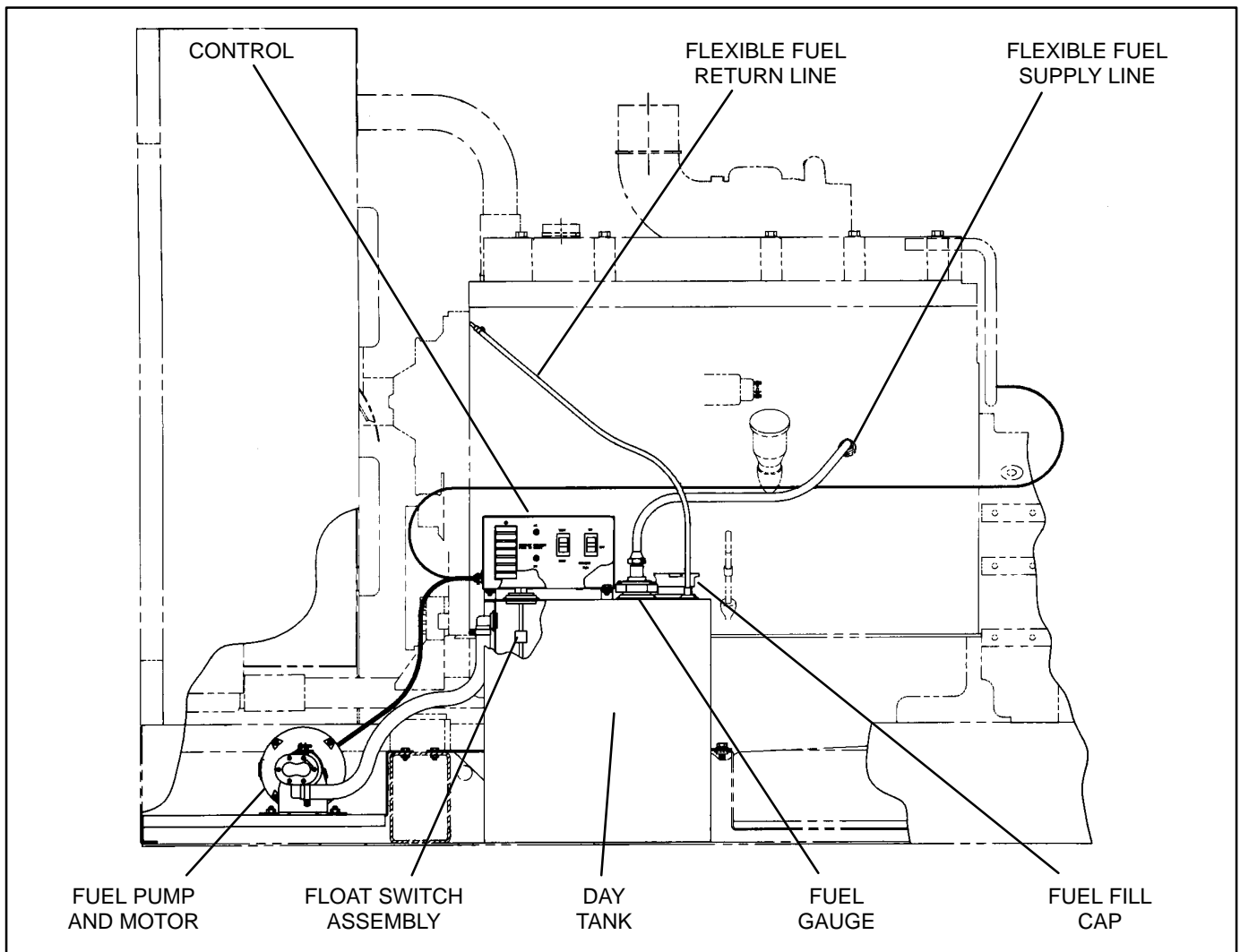


FIGURE 6-6. TYPICAL IN-SKID DAY TANK INSTALLATION

Fuel Pump Control AC Connections

The control can be powered by 120 VAC or 240 VAC. The control is set up at the factory for connection to 240 VAC.

1. To convert the day tank controller from 240 VAC to 120 VAC, perform the following steps.
 - A. Remove the two jumpers between terminals **TB1-6** and **TB1-7** in the control box and connect one between terminals **TB1-5** and **TB1-6** and the other between terminals **TB1-7** and **TB1-8**.
 - B. Move selector switch **S103** on the control PCB to the up position for 120V.
 - C. If the control is equipped with a transformer, remove the two jumpers between terminals **H2** and **H3** and connect one between **H1** and **H3** and the other between **H2** and **H4**.
2. To convert the day tank controller from 120 VAC to 240 VAC, perform the following steps.
 - A. Remove the jumpers between terminals **TB1-5** and **TB1-6**, and **TB1-7** and **TB1-8** in the control box and connect the two jumpers between terminals **TB1-6** and **TB1-7**.
 - B. Move selector switch **S103** on the control PCB to the down position for 240 VAC.
 - C. If the control is equipped with a transformer, remove the jumpers between terminals **H1** and **H3**, and **H2** and **H4** and connect the two jumpers between **H2** and **H3**.
3. Attach a tag to the control box indicating the supply voltage.
4. Terminals **TB1-8** and **TB1-5** are available for connection of a 120 or 240 VAC electric fuel shutoff valve rated not more than 0.5 amps. The voltage rating of the valve must correspond with the voltage utilized for the pump. See Item 2 above.

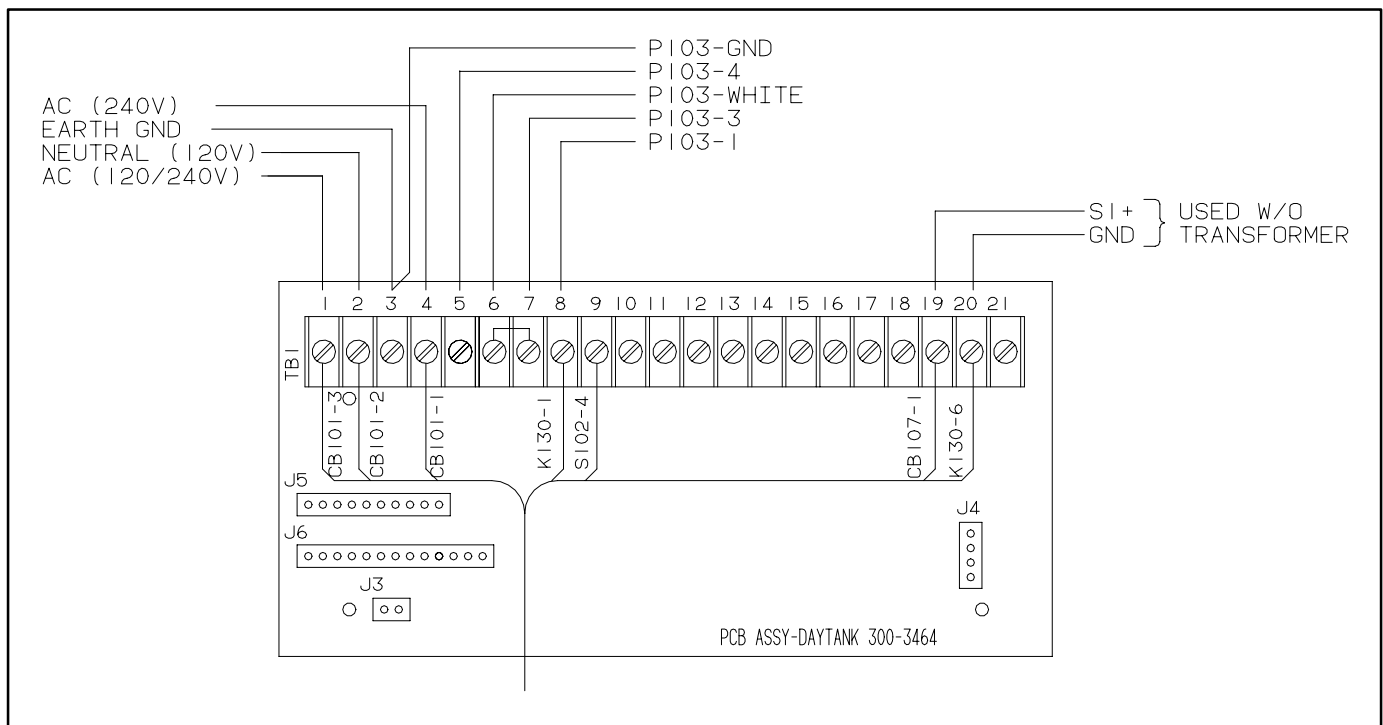


FIGURE 6-7. FUEL PUMP CONTROL TERMINAL BOARD

GROUND FAULT ALARM RELAY (OPTIONAL)

The optional Ground Fault Relay (GFR) (Figure 6-8) is typically located behind the lower control housing grille. The ground fault relay continuously monitors the neutral to ground connection and activates a fault alarm when the connection is broken. During genset operation, the relay continuously monitors the line to neutral and activates a fault alarm when a ground fault is sensed.

The relay alarm contacts are typically connected to the genset control to provide a "Ground Fault Alarm" indication.

A control reset will clear the fault at the control panel and will also reset the ground fault relay.

The relay has a time delay setting of zero to one second and a current setting of 5 to 1200 amperes.

Adjust the Current and the Time Delay controls on the ground fault relay to the customers specifications.

After the installation of the genset is complete, perform the following procedure to test the operation of the ground fault relay.

- A. Verify that the **N-G** Fault Indicator on the GFR is not lit. If lit, it indicates that the bonding jumper circuit (neutral to ground) is open. If genset does not require bonding jumper, a bonding jumper must be installed at the facility service entrance.
- B. Move the control switch to the Run position.
- C. Press the TEST switch on the ground fault relay.
- D. Verify that the control panel warning message is displayed and the Fault Indicator (**>I**) on the GFR is lit.
- E. Reset the control panel fault (this will also reset the ground fault relay).

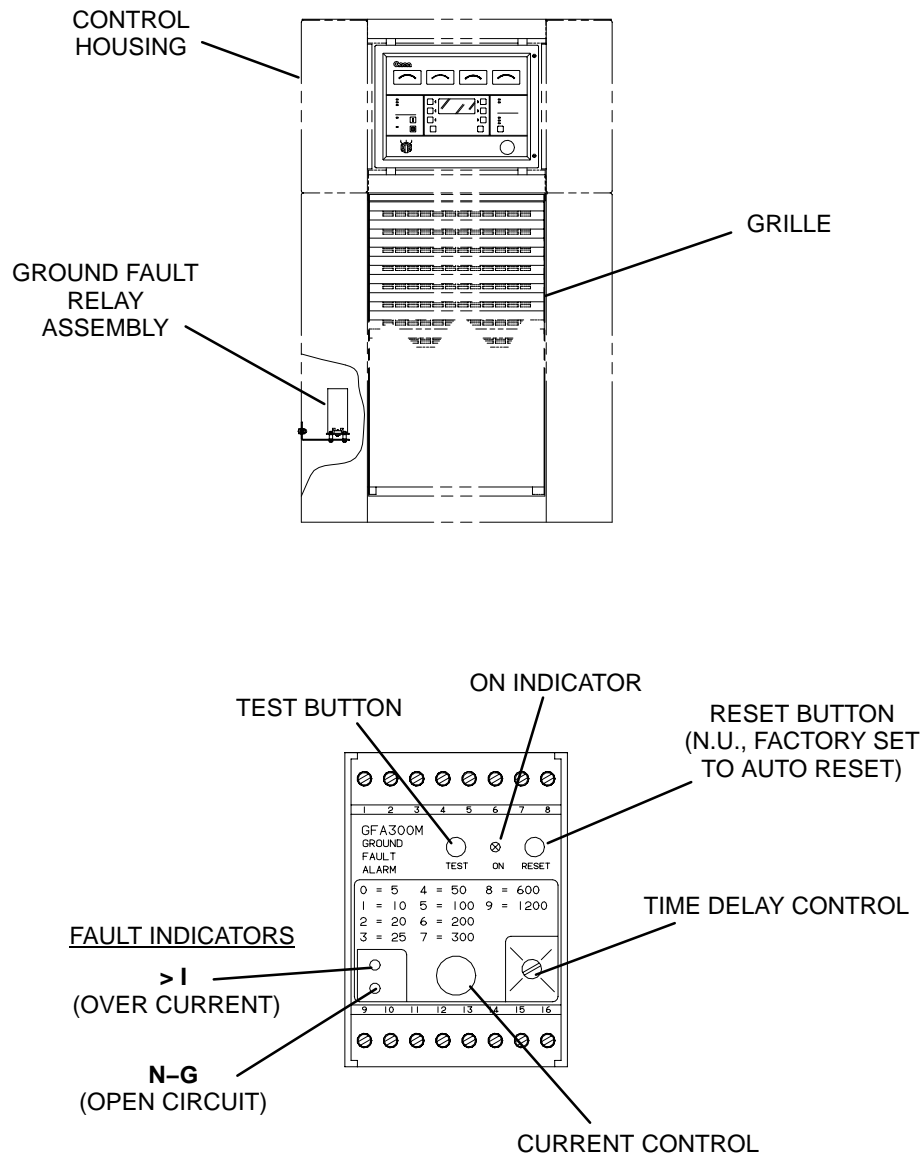


FIGURE6-8. GROUND FAULT ALARM RELAY

THIS PAGE LEFT INTENTIONALLY BLANK

7. Enclosure Electrical Connections

GENERAL

Generator sets configured with an enclosure can contain one or more optional features. The optional features that require electrical connections when installing the generator set are described in this section. For wiring diagrams of enclosure options, refer to Section 10, *Enclosure/Options Wiring*.

⚠ CAUTION *Flexible conduit and stranded conductors must be used for connections to take up movement of the genset. Solid copper wire may break due to genset vibration.*

Figure 7-1 shows the location of the optional features within the enclosure.

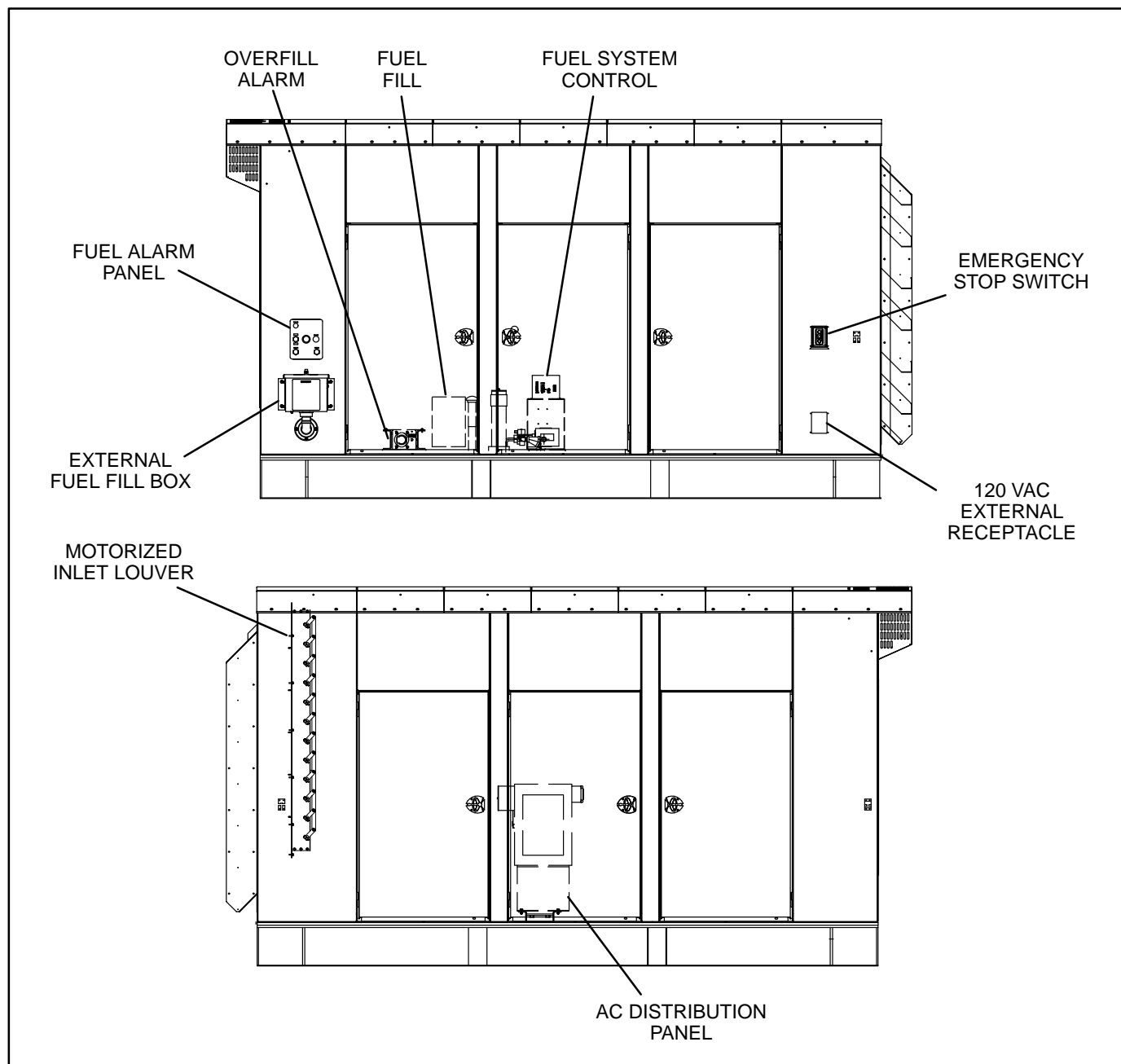


FIGURE 7-1. OPTIONAL ENCLOSURE FEATURES (WEATHER ENCLOSURE SHOWN)

OPTIONAL AC DISTRIBUTION PANEL

The AC distribution panel (Figure 7-2) provides a centralized power source (120/220VAC) for all optional enclosure features.

⚠ CAUTION *Make sure all circuit breakers are in the OFF position before applying power to the AC distribution panel. Other options may require additional installation before connecting to power.*

⚠ CAUTION *When the generator set contains the fuel transfer pump option, power to the AC distribution panel must be fed from a transfer switch and step-down transformer to maintain 120V power to the pump when utility power is interrupted. If the transfer pump option is not installed, power to the AC distribution panel can be fed from a non-emergency source. (Other optional features connected to the AC distribution*

panel are not needed for generator set operation.)

All connections to the AC distribution panel are to be done in compliance with the National Electric Code and all applicable local codes and standards using 60 or 75 degree conductors.

The AC distribution panel is designed to be fed with a 100AMP, 120/240VAC, single phase feeder. The two line conductors connect into the 100AMP main breaker that is listed for #4 to 2/0 conductors, AL or CU when torqued to 50 in-lbs.

The neutral conductor connects into the neutral bus which is listed for #5 to 300KCMIL conductors, AL or CU when torqued to 21 ft-lbs.

The grounding conductor, if used, connects into the ground bar which is listed for #1 to 2/0 conductors, AL or CU when torqued to 17 ft-lbs.

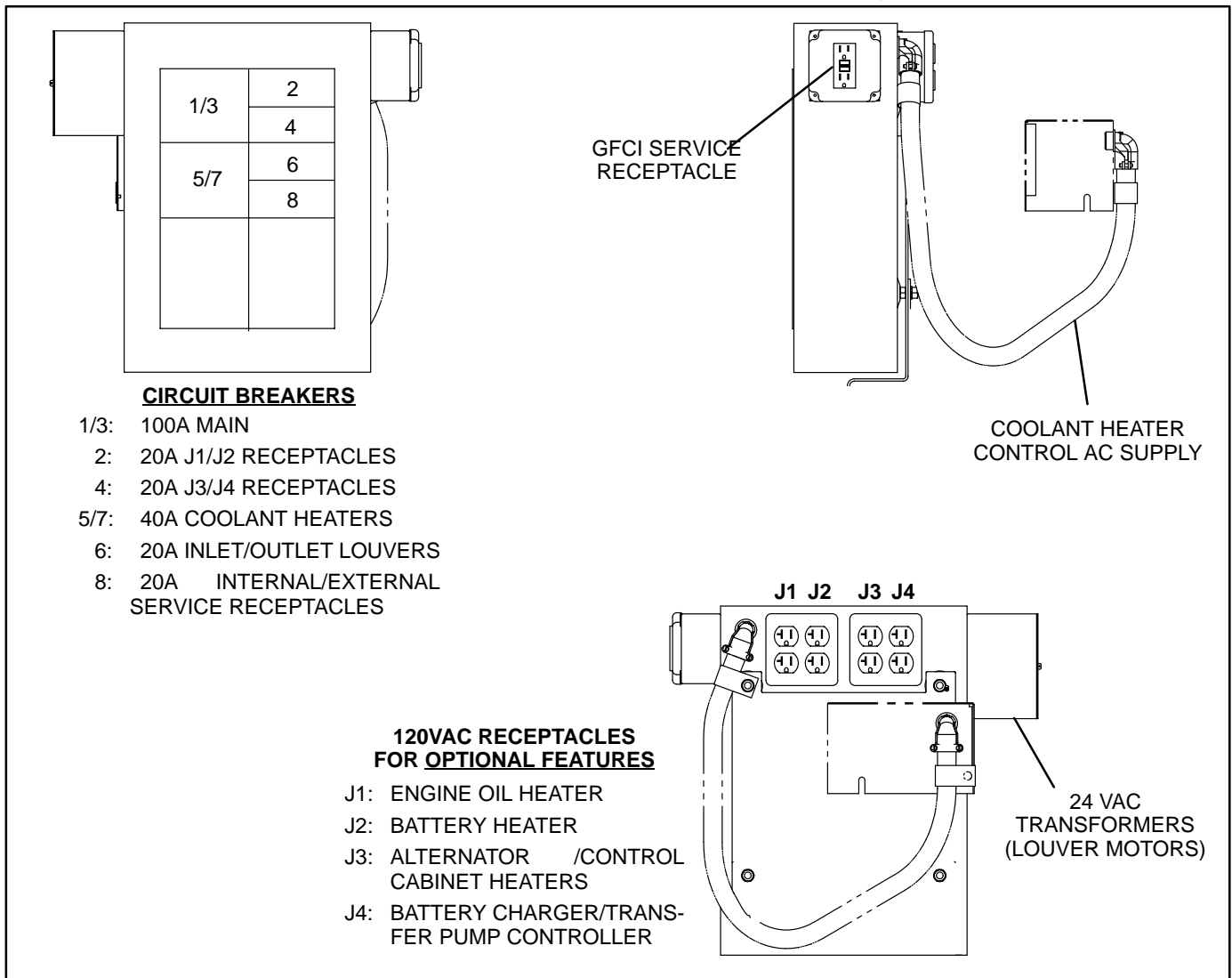


FIGURE 7-2. AC DISTRIBUTION PANEL FEATURES

OPTIONAL MOTORIZED INLET/OUTLET LOUVERS

Louvers (inlet and/or outlet) are powered by either 24VDC supplied by genset control switched B+ or 24VAC transformer connected to shore power.

With switched B+ or gensets having the AC distribution panel, the motorized louvers are prewired and require no further installation (Figure 7-3).

Without the AC distribution panel, the 24VAC louvers are not prewired. Louvers operating on 24VAC require 30VAC, 24 volt class 2 transformer(s). (Transformers are not supplied with genset that does not contain an AC distribution panel.) Mount and connect the transformer(s) to the 18 gauge wires terminated at the AC distribution panel location. Connect the transformer(s) to a source of power that will be on during the time the engine is not running.

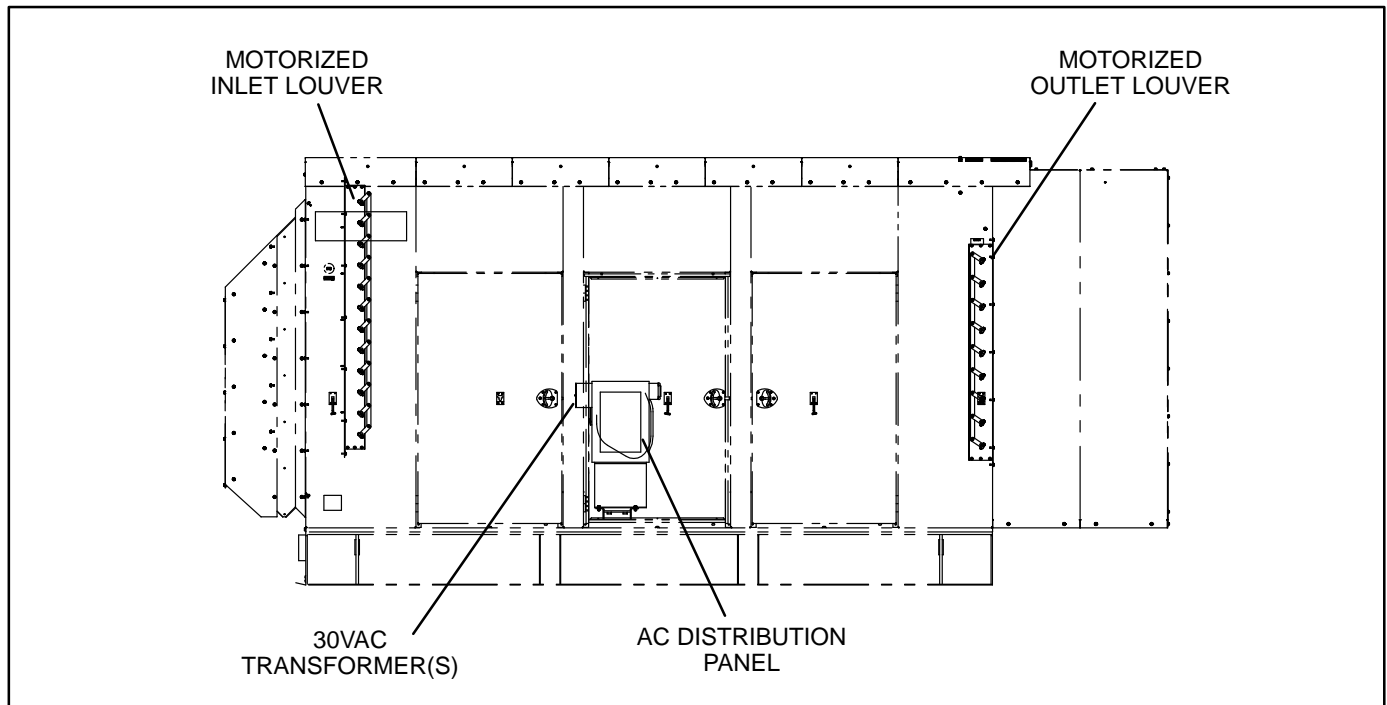


FIGURE 7-3. MOTORIZED LOUVER

OPTIONAL FUEL TRANSFER PUMP

A fuel transfer pump and control are available when a sub-base fuel tank is provided. The automatic control operates the fuel pump to maintain a reservoir of fuel in the sub-base tank.

CAUTION *Power to the fuel transfer pump must be fed from a transfer switch and step-down transformer to maintain 120V power to the pump when utility power is interrupted. Power must be supplied to the transfer pump during the time the genset is running or not running.*

The fuel transfer pump/controller is prewired and ready to connect to a 120VAC source.

NOTE: When power is applied to the control or is restored after a power interruption, the control will au-

tomatically go to the power on mode (functions the same as pressing the ON switch). The pump will start if the control detects low fuel in sub-base tank.

CAUTION *Do not connect AC power to the fuel transfer pump control without having fuel in the supply tank. Damage to the pump can occur if pump operates with no fuel in supply tank.*

Supply Tank

Refer to *Section 4* for information regarding the installation/plumping of the supply tank to the sub-base fuel tank.

The fuel transfer pump has a maximum inlet restriction capability of 16 inch Hg (which is approximately equivalent to 20 feet of diesel).

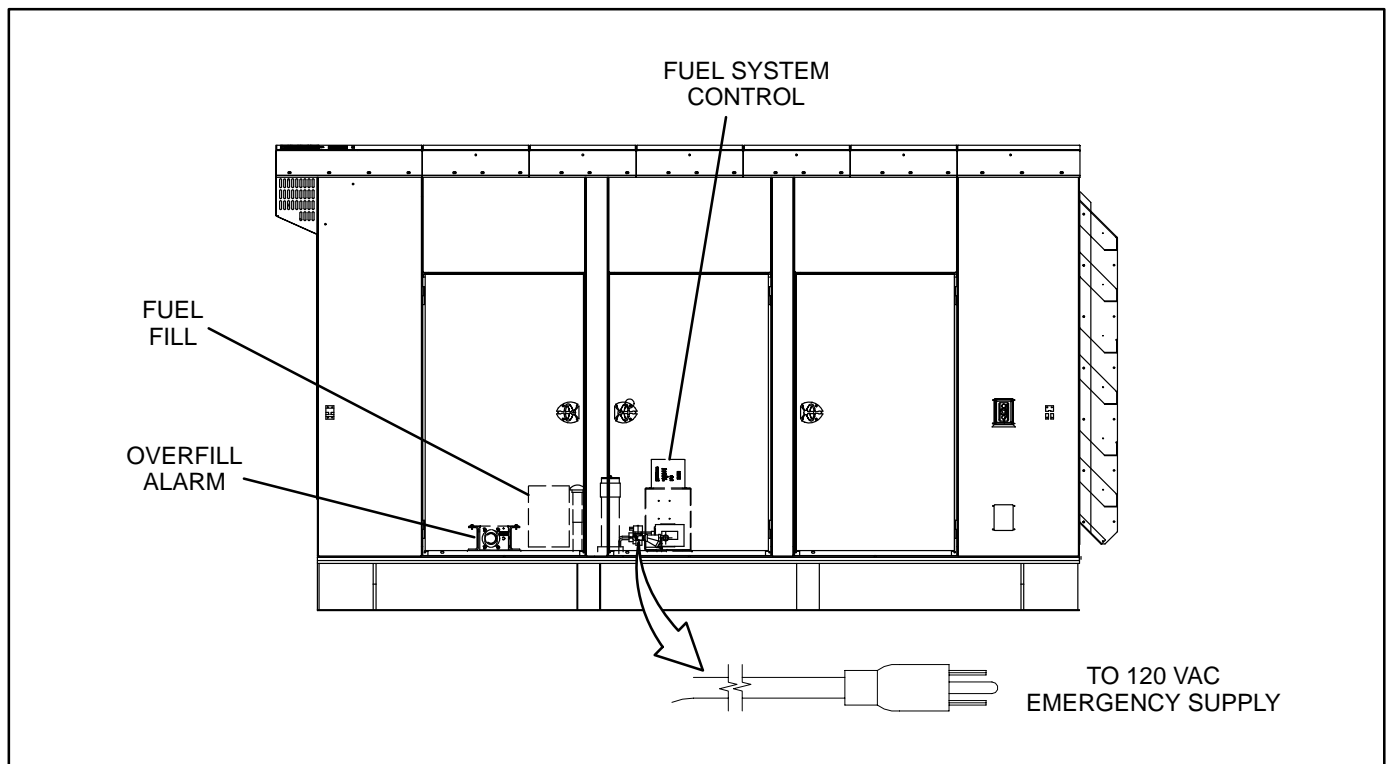


FIGURE 7-4. FUEL TRANSFER PUMP/CONTROL LOCATION

8. Prestart Preparation

GENERAL

Before attempting the initial start of the generator set, be sure to complete the *Installation Checklist* in Section 10.

PCC POWER ON / STANDBY MODE

⚠ CAUTION *Before disconnecting battery cable(s), press the Emergency Stop button and wait at least 30 seconds. Engine performance may be affected (e.g., engine dying or hard starting) if battery cable(s) is removed during the 30 second waiting period. Service personnel may be required to correct fault.*

⚠ WARNING *Ignition of explosive battery gases can cause severe personal injury. Arcing at battery terminals, light switch or other equipment, flame, pilot lights and sparks can ignite battery gas. Do not smoke, or switch trouble light ON or OFF near battery. Discharge static electricity from body before touching batteries by first touching a grounded metal surface.*

Ventilate battery area before working on or near battery—Wear goggles—Stop genset and disconnect charger before disconnecting battery cables—Disconnect negative (–) cable first and reconnect last.

⚠ CAUTION *Disconnect battery charger from AC source before disconnecting battery cables. Otherwise, disconnecting cables can result in voltage spikes damaging to DC control circuits of the set.*

⚠ WARNING *Accidental starting of the generator set can cause severe personal injury or death. Prevent accidental starting by disconnecting the negative (–) cable from the battery terminal.*

Before opening the PCC control cabinet to make the following Power On/Standby Mode selection, remove the negative (–) battery cable(s) from the generator set starting battery as follows:

1. Move the Run/Off/Auto switch on the control panel to the OFF position.
2. Press the Emergency Stop button and wait at least 30 seconds before completing Step 3.
3. Turn off or remove AC power from the battery charger.
4. Remove the negative (–) battery cable from the generator set starting battery.

Selecting Power On or Standby Mode

⚠ CAUTION *Electrostatic discharge will damage circuit boards. To prevent this damage, always wear a grounding wrist strap when working inside control box.*

Set the Power On / Standby Mode switch (S5 in Figure 8-1) to the desired position.

Power On Mode: Slide the switch to the left to select the Power On (awake) mode. It is recommended that switch S5 be left in the Power On mode in all applications, except those where battery charging is not available.

The PCC will initialize the operating software and permit operation of the menu display panel. Power will stay on until the switch is reset to the Standby Mode.

Standby Mode: Slide the switch to the right to select the Standby (sleep) Mode. In this mode, the PCC operating software will be initiated by:

- moving the Run/Off/Auto switch to the Run position,
- pressing the Self Test button,
- a remote start input signal (genset in Auto mode), or
- any one of several “wake-up” signals from external switches.

With the switch set to Standby mode, pressing the Self Test button will allow you to activate and view the menu displays without starting the generator set. If no menu selections are made, a software timer will shut down the power after 30 seconds.

When left in the Standby Mode, and a “Warning” signal is sensed by the PCC (for example, low engine temp), the control will wake up and display the warning message. The control will remain active until the warning condition is corrected and the Reset button is pressed to clear the warning message.

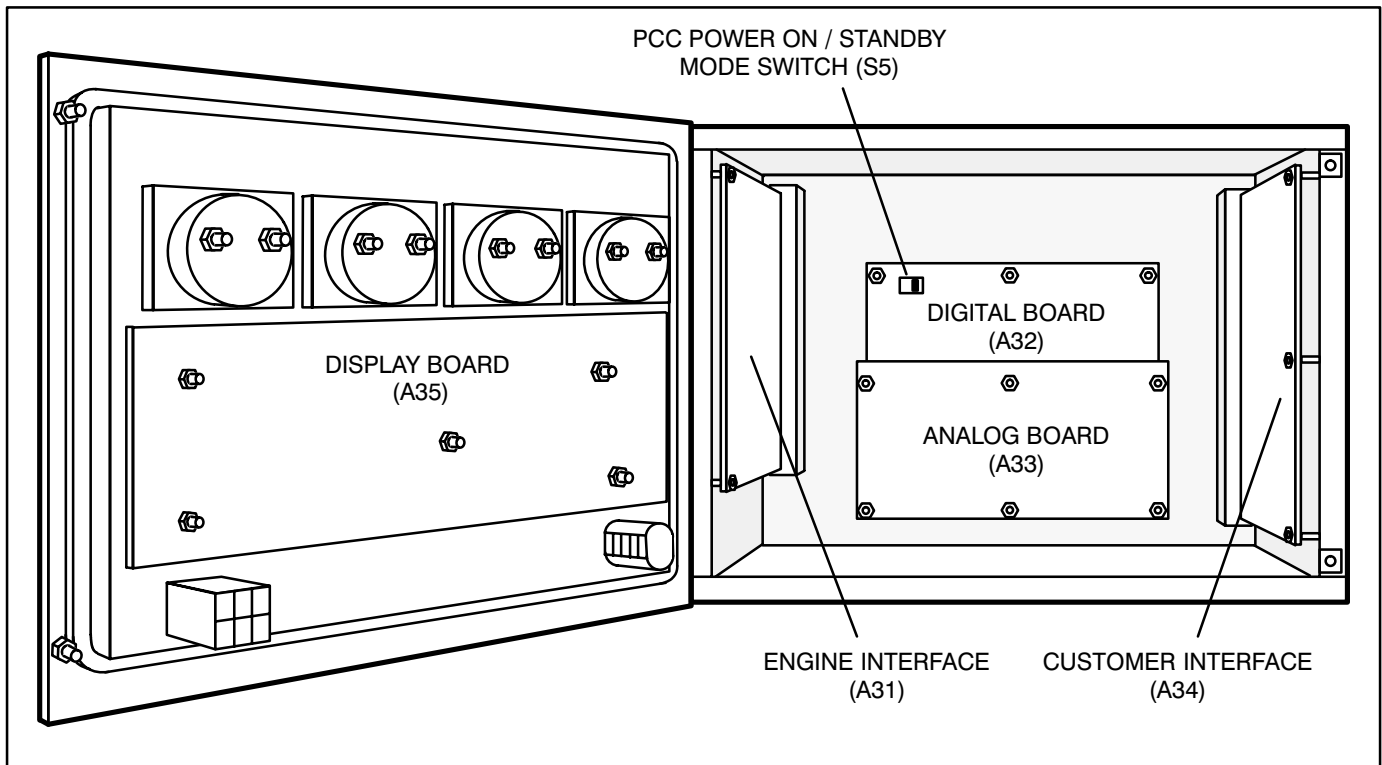


FIGURE 8-1. CABINET INTERIOR (PCC 3100)

ELECTRICAL SYSTEM

Verify all electrical connections are secure and all wiring is complete and inspected. Replace and secure any access panels that may have been removed during installation.

Battery Connections

⚠WARNING *Accidental starting of the generator set can cause severe personal injury or death. Make sure that the Run/Off/Auto switch on the control panel is set to the Off position before connecting the battery cables.*

Starting the unit requires 24 volt battery current, using two 12 volt batteries (see *Specification* section). Connect the batteries in series (negative post of first battery to the positive post of the second battery) as shown in Figure 8-2.

Service the batteries as necessary. If an automatic transfer switch is installed without a built-in charge circuit, connect a separate battery charger. A battery charger is required when the PowerCommand control is set to the Power On (awake) mode.

⚠WARNING *Ignition of explosive battery gases can cause severe personal injury. Always connect negative (-) battery cable last to prevent arcing.*

⚠WARNING *Ventilate battery area before working on or near battery. Arcing at battery terminals, light switch or other equipment, flame, pilot lights and sparks can ignite battery gas. Do not smoke, or switch trouble light ON or OFF near battery. Discharge static electricity from body before touching batteries by first touching a grounded metal surface.*

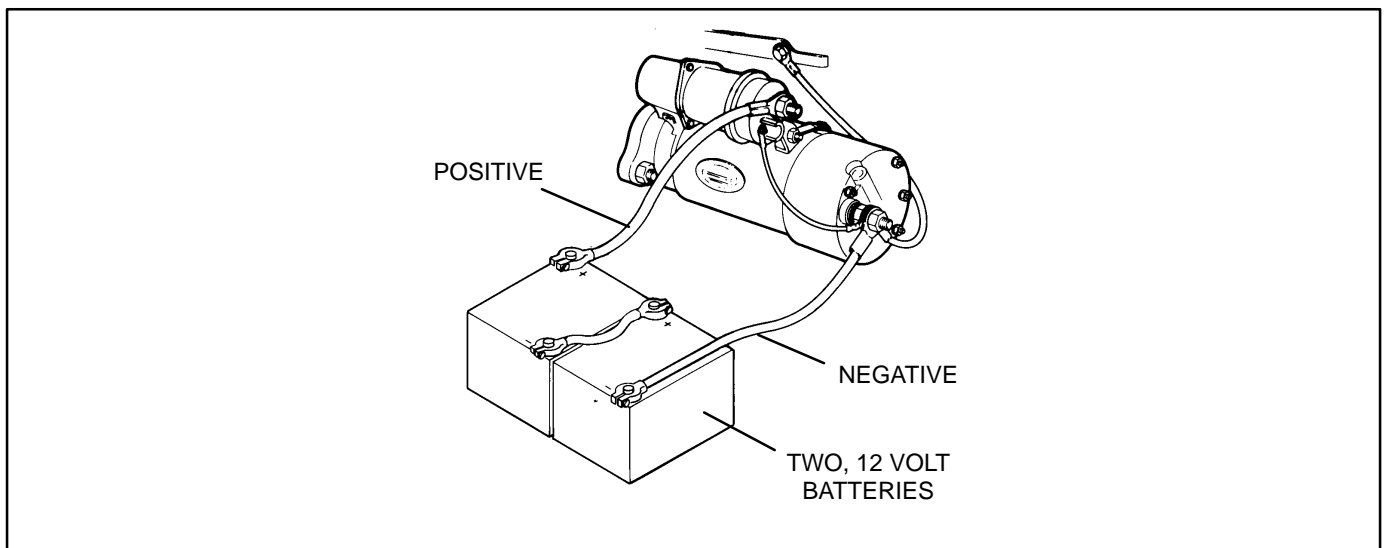


FIGURE 8-2. GENSET BATTERY CONNECTIONS

PCC OPTIONS PRESTART CHECKS

All generator set configuration options are set at the factory except for site related options, (e.g., Start/Stop Time Delays, Cycle Crank, Customer Fault 1 and 2, etc..

Adjustment of these options are divided into two categories within the menu driven system. These two categories are *Adjust* and *Setup/Calibrate*.

The *Setup/Calibrate* submenus are intended for qualified service personnel only and require a password to modify these submenus. The *Adjust* submenus are intended for service personnel and site personnel.

The *Adjust* submenus allow site personnel to calibrate the generator set voltage/frequency, and start/stop time delays. For the prestart checks, adjustment of only the start/stop delays is required.

Adjust Menu

To adjust the start and stop delays, press the button next to the word "ADJUST" in the Main Menu. Figure 8-3 shows a block representation of the ADJUST menu. After you press the button next to the word "ADJUST" in the display, the VOLTAGE submenu will appear.

As shown in the diagram, the ADJUST menu has four submenus, including a save/exit procedure. To move through the VOLTAGE and FREQUENCY submenus, press the button next to the '>>' to display the STOP DELAY submenu.

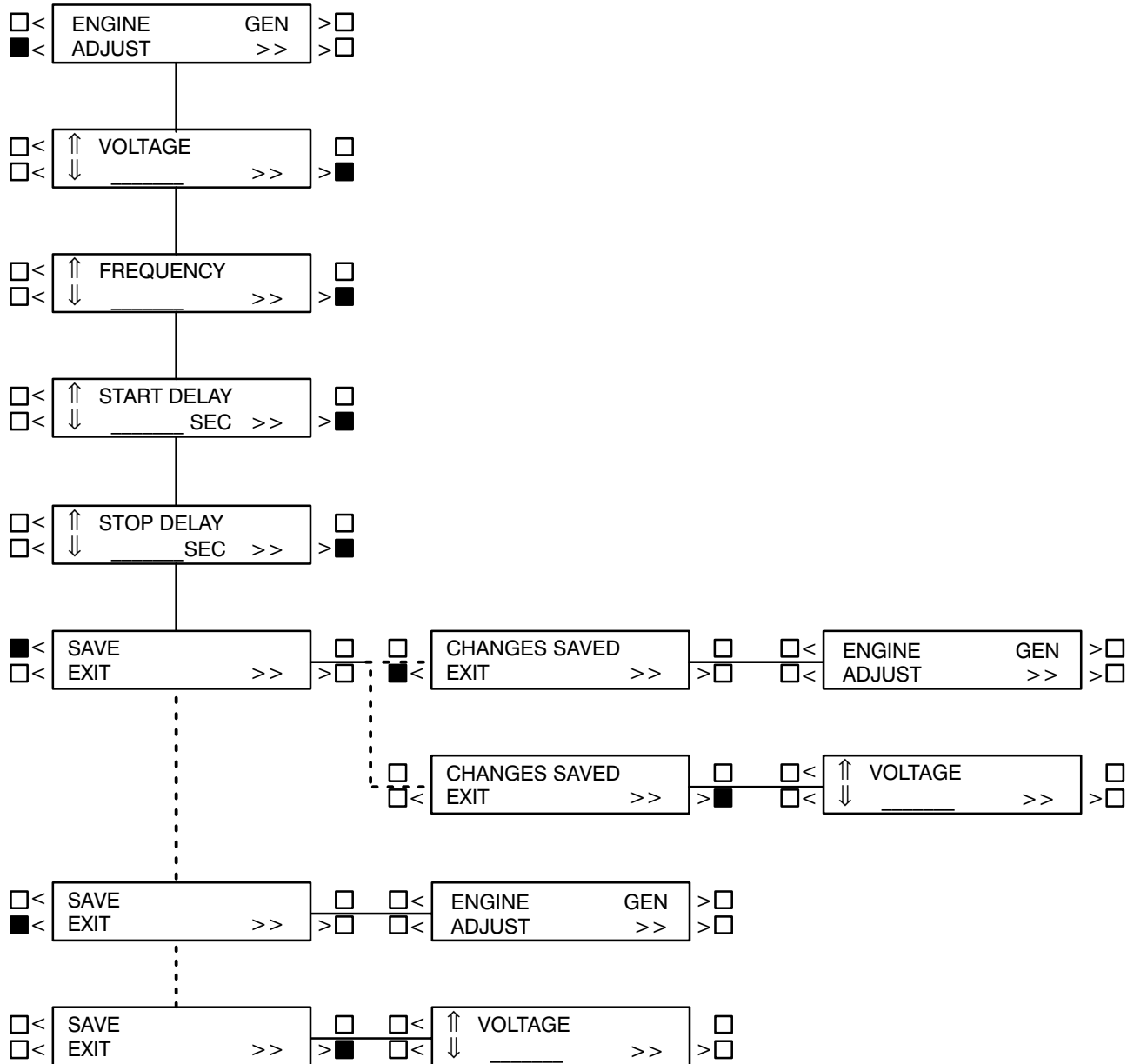
START DELAY submenu: This delay applies only to remote starting in the Auto mode. Use the buttons next to the "↑" and "↓" symbols to set the start delay. The start delay adjustment range is 0 to 300 seconds.

STOP DELAY submenu: This delay applies only to remote stopping in the Auto mode. From the START DELAY submenu, press the button next to the ">>" in the display to move to the STOP DELAY submenu. Use the buttons next to the "↑" and "↓" symbols to set the stop delay. The stop delay adjustment range is 0 to 600 seconds.

SAVE/EXIT submenu: From the STOP DELAY submenu, press the button next to the ">>" in the display to move to the SAVE/EXIT submenu. Select SAVE to save your changes. At the CHANGES SAVED submenu, select EXIT to return to the Main menu.

If you select SAVE, the adjustments will be retained after shutdown, and will be in effect when the set is restarted. If you select EXIT without saving first, the adjustments will remain in effect until the genset is shut down and return to the previous settings when the set is restarted.

ADJUST MENU



- - - - Indicates "OR" Condition

FIGURE 8-3. ADJUST MENU

STARTING

Refer to the generator set *Operator's* manual for important safety precautions and recommended procedures for starting the genset and verifying proper operation. Start the generator set and verify all engine and generator gauges are displaying the correct values.

9. Installation Checklist

GENERAL

- ☐ Generator set wattage capacity is sufficient to handle maximum anticipated load.
- ☐ At least 3 feet of clearance (or greater for housing door) is provided around entire generator set for servicing and ventilation.
- ☐ Generator set is located in an area not subject to flooding.
- ☐ All operating personnel have read and are familiar with Operator's Manual.
- ☐ All operators have been thoroughly briefed on preventive maintenance procedures.
- ☐ All operators have read and understand all Important Safety Instructions in Operator's Manual.

GENERATOR SET SUPPORT

- ☐ Floor, roof or earth on which the generator set rests is strong enough and will not allow shifting or movement. Observe local codes on soil bearing capacity due to freezing and thawing.
- ☐ Generator set is properly supported and retained to approved base.
- ☐ Supporting base is large enough and is of non-combustible material – extends 6-inches all around set.

COOLING AIR FLOW

- ☐ Generator set air inlet is faced into direction of strongest, prevailing winds.
- ☐ Air inlet openings are unrestricted and at least 1–1/2 times larger than air outlet area.
- ☐ Cooling air outlet is on downwind side of building (if not, wind barrier is constructed).
- ☐ Proper ducting material (sheet metal, canvas) is used between radiator and air outlet.

DIESEL FUEL SYSTEM

- ☐ Fuel tanks meet or exceed all Local, State or National codes.
- ☐ Fuel lines are properly installed, supported and protected against damage.
- ☐ Approved flexible fuel line is installed between main fuel supply line and generator set's fuel system, near the generator set, to protect the fuel system from damage caused by vibration, expansion and contraction.
- ☐ Strainer or fuel screen (100 to 120 mesh) is installed in the fuel supply line to protect the fuel lift pump, day tank transfer pump or float valve seat from fuel supply tank debris.
- ☐ Fuel supply line shutoff valves are installed to prevent fuel flow in case of leaks.
- ☐ No shutoff valves are installed on engine fuel return line.
- ☐ External fuel pumps are connected and operational at all times (generator set started or shut down).
- ☐ Fuel system is properly primed.
- ☐ No fuel leaks are found in supply line or engine fuel system.

EXHAUST SYSTEM

- ☐ Operators are thoroughly briefed on the dangers of carbon monoxide gas.
- ☐ Areas around set are well ventilated. No possibility of exhaust fumes entering building doors, windows, or intake fans.
- ☐ Exhaust gases are piped safely outside and away from building.
- ☐ The correct length of approved rigid pipe is connected to the generator set flexible pipe using approved securing methods with no weight resting on engine exhaust components. There are no bends in flex section.
- ☐ Condensation drain is provided in lowest section of exhaust piping.
- ☐ Exhaust piping is insulated to guard against burns to personnel.
- ☐ Exhaust piping passing through walls or ceilings have approved fire-proof materials and are in compliance with all codes.
- ☐ Exhaust piping is large enough in diameter to prevent excessive back pressure on engine.

AC AND DC WIRING

- ☐ Wire sizes, insulation, conduits and connection methods all meet applicable codes.
- ☐ AC and DC wires are separated in their own conduit to prevent electrical induction.
- ☐ All load, line and generator connections are proper and correct.
- ☐ Flexible conduit between generator set and building or surrounding structure.

GENERATOR SET PRESTART

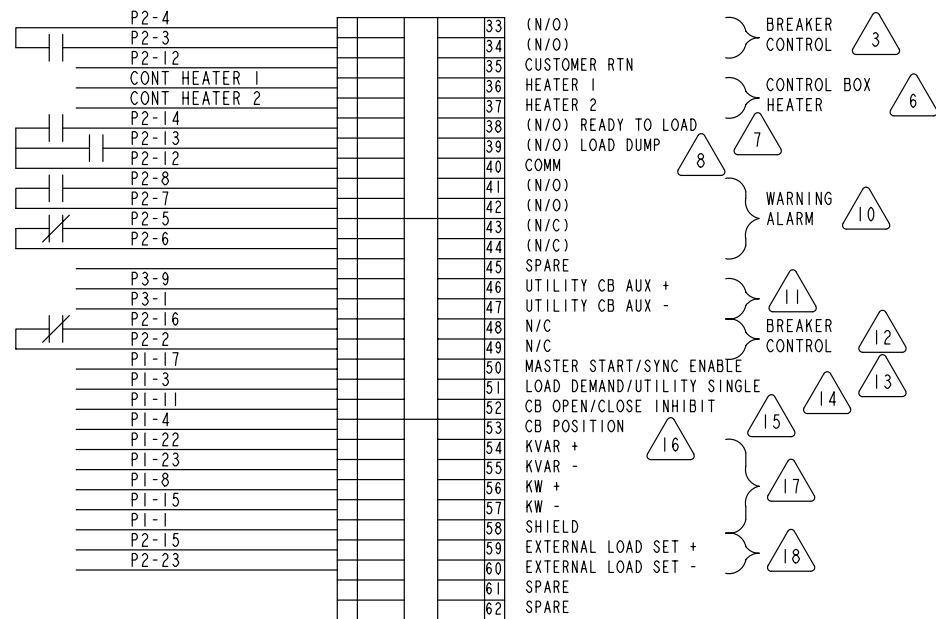
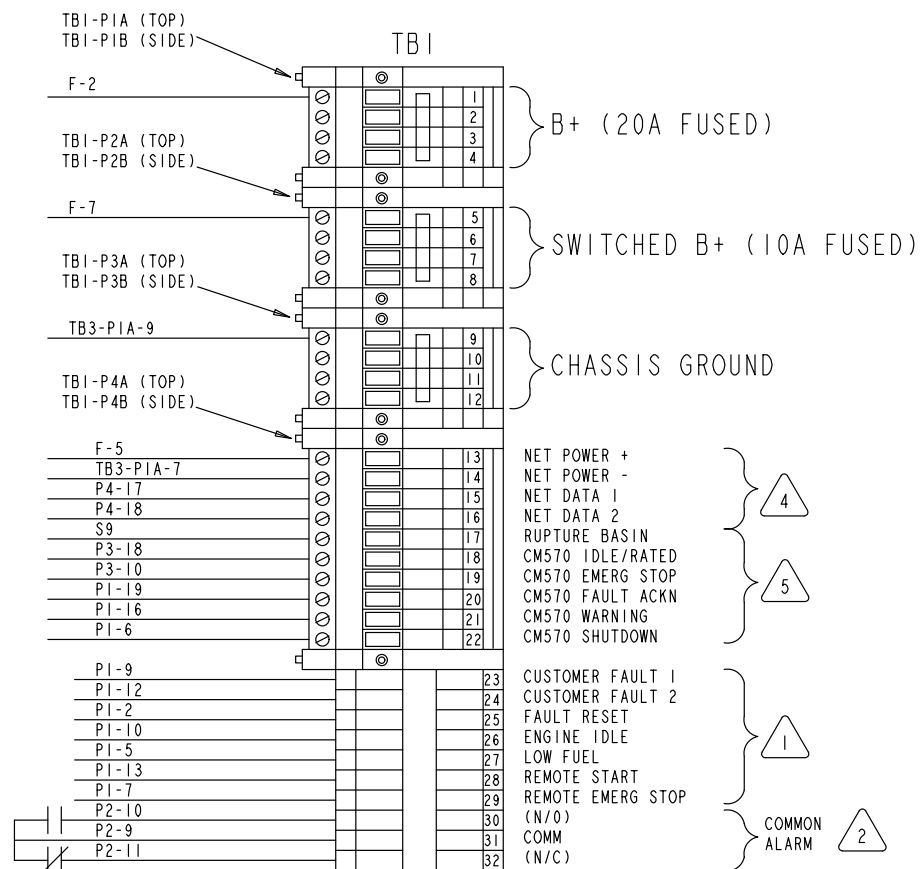
- ☐ Generator set engine is properly serviced with oil and coolant.
- ☐ Batteries are properly installed, serviced and charged.
- ☐ Battery charger and engine coolant heater are connected and operational.
- ☐ All generator set covers and safety shields are installed properly.
- ☐ All fuel and coolant shutoff valves are operational.

10. Wiring Diagrams

GENERAL

This section contains the Customer Connections Diagram referenced in text.

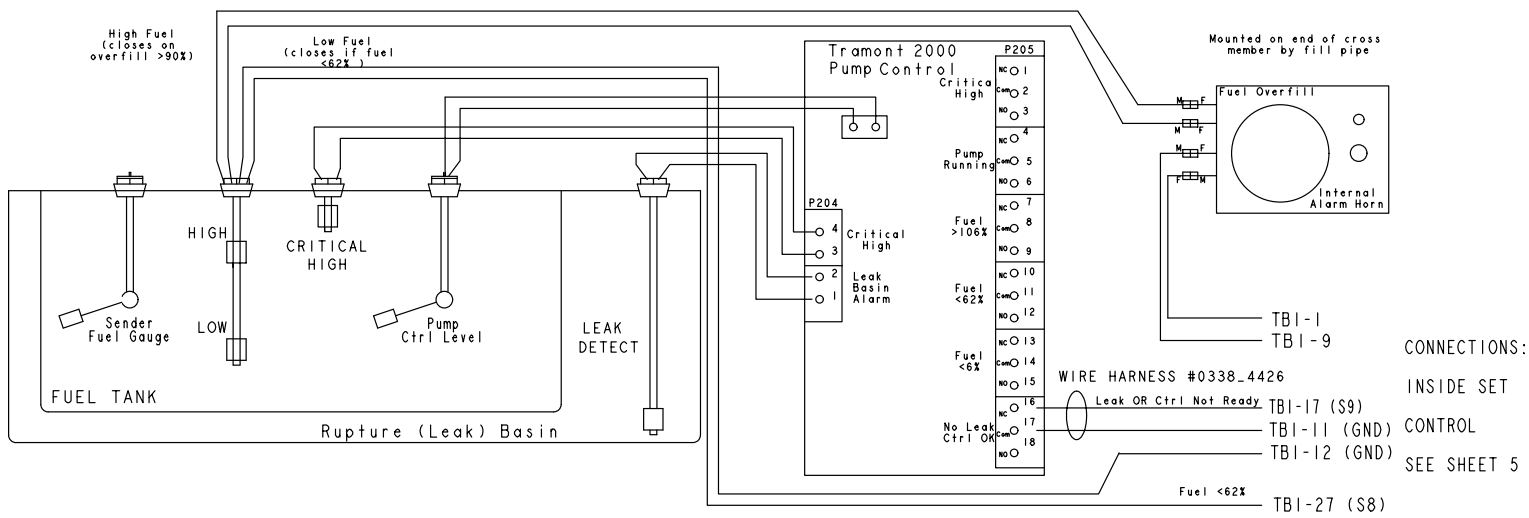
- Page 10-2 – PCC Customer Connections Diagram
- Page 10-3 and 10-4 – Enclosure/Options Wiring



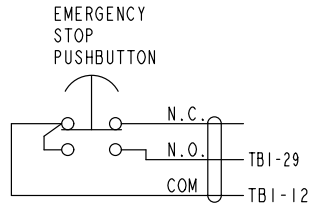
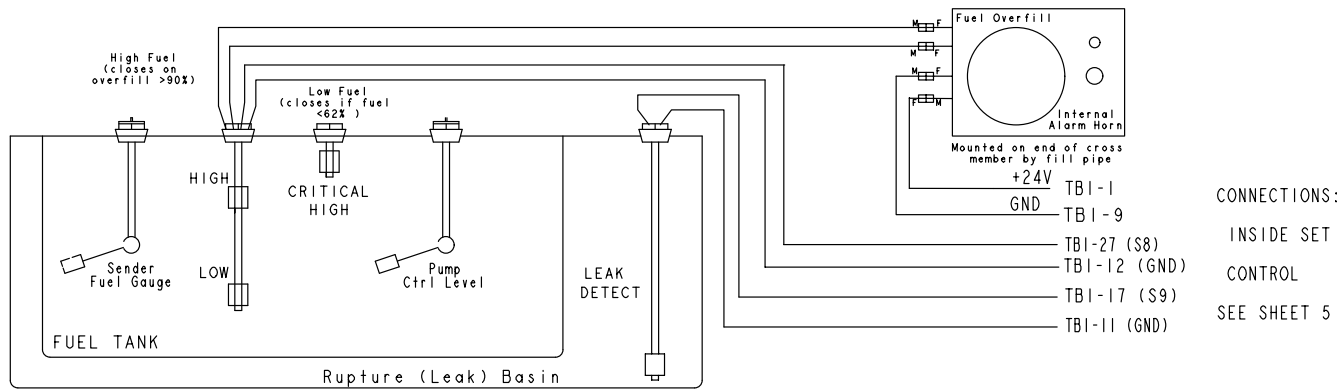
TERMINAL BLOCK POSITIONS
TBI-41 THROUGH TBI-60 ARE
FOR PARALLELING ONLY

- NOTE:
- 1 APPLY GROUND TO ACTIVE INPUT. CUSTOMER FAULT 2 AND CUSTOMER FAULT 3 "WAKE UP" CONTROL. USE COPPER STRANDED WIRE. 20 GA FOR RUNS LESS THAN 1000 FT. 18 GA FOR RUNS FROM 1000 TO 2000 FT. (LESS THAN 50mA CURRENT)
 - 2 2A @ 30VDC RELAY CONTACTS. THIS RELAY PICKS UP SHUT DOWNS ONLY.
 - 3 5A @ 30VDC RELAY CONTACTS. THIS RELAY PICKS UP CLOSE THE BREAKER AND DROPS OUT TO THE OPEN THE BREAKER.
 - 4 REFER TO ONAN 900-0366 POWER COMMAND NETWORK AND OPERATION MANUAL FOR INTERCONNECTION INSTRUCTIONS (OPTIONAL PCC NETWORK INTERFACE MODULE).
 - 5 1A @ 30VDC ISOLATED RELAY CONTACTS. THESE RELAYS PICK UP ON ASSIGNED CM570 ENGINE CONTROL MODULE FAULTS ALLOWING FOR MONITORING OF CM570 FAULTS.
 - 6 120VAC OR 240VAC @ 50 WATTS (OPTIONAL).
 - 7 2A @ 30VDC ISOLATED RELAY CONTACTS. THIS RELAY PICKS UP WHEN GENERATOR AC VOLTAGE AND FREQUENCY EXCEED 90% OF NORMAL.
 - 8 2A @ 30VDC RELAY CONTACTS. THIS RELAY PICKS UP IF AN OVERLOAD OR UNDER-FREQUENCY CONDITION OCCURS.
 - 9 TERMINAL BLOCK RATING
20A, 600V
22 TO 12 GA WIRE
TORQUE TERMINAL SCREWS TO 7 IN-LBS (0.8 NM)
 - 10 5A @ 30 VDC RELAY CONTACTS. THIS RELAY PICKS UP WHEN A WARNING CONDITION OCCURS.
 - 11 APPLY B+ AND A GROUND TO CIRCUIT BRAKER AUXILIARY TO INDICATE A UTILITY BREAKER CLOSURE (LESS THAN 50 mA).
 - 12 5A @ 30VDC RELAY CONTACTS. THIS RELAY PICKS UP TO CLOSE AND DROPS OUT TO OPEN THE GENERATOR CIRCUIT BREAKER.
 - 13 PULSED INPUT TO ENABLE GENSET AS FIRST ON LINE FOR MULTIPLE UNITS. IN SINGLE/UTILITY PARALLEL MODE, APPLY 24VDC TO ENABLE SYNCHRONIZER.
 - 14 IN MULTIPLE UNIT OPERATION MODE APPLY GROUND TO CAUSE LOAD DEMAND STOP. IN SINGLE MODE, GROUND TERMINAL TO ENABLE BREAKER CLOSURE.
 - 15 APPLY A GROUND TO REMOTELY OPEN OR INHIBIT CLOSURE OF THE GENERATOR CIRCUIT BREAKER WHEN PCC IS IN AUTO MODE (LESS THAN 50mA).
 - 16 APPLY A GROUND TO INDICATE GENERATOR CIRCUIT BREAKER IS CLOSED (LESS THAN 50mA).
 - 17 PARALLEL LOAD SHARE LINES (0 - 1mA), USE 4 CONDUCTOR SHIELDED CABLE, 18 GA STRANDED. MAXIMUM RUN 500 FT.
 - 18 ANALOG 0-5VDC INPUTS TO CONTROL GENERATOR LOAD IN UTILITY PARALLELING MODE.

FUEL OVERFILL ALARM WITH
TRANSFER PUMP CONTROLLER W/ CRITICAL ALARM AND LEAK BASIN ALARM



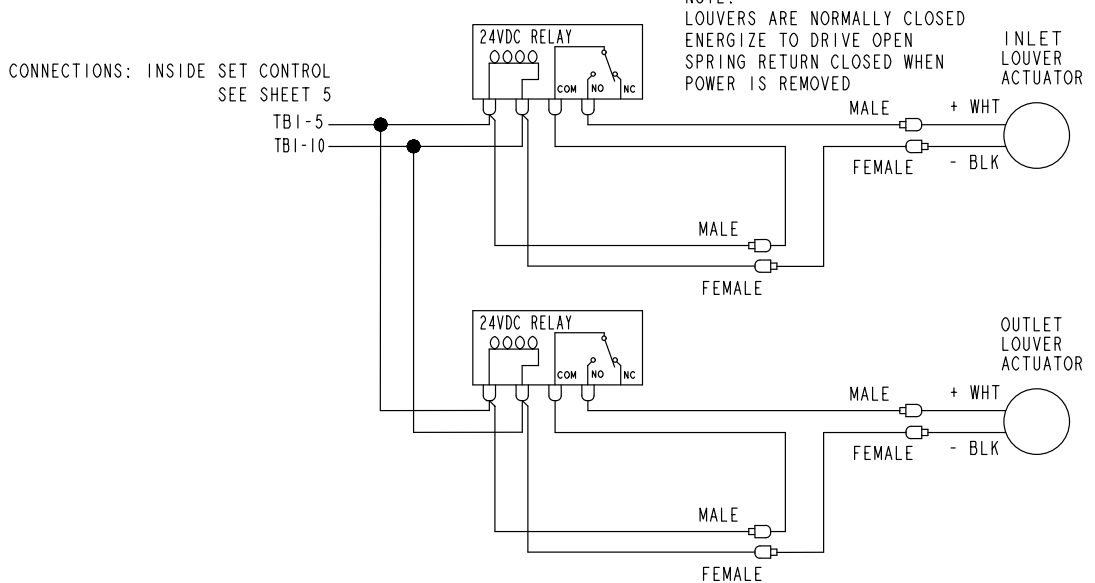
FUEL OVERFILL ALARM WITHOUT
TRANSFER PUMP CONTROLLER



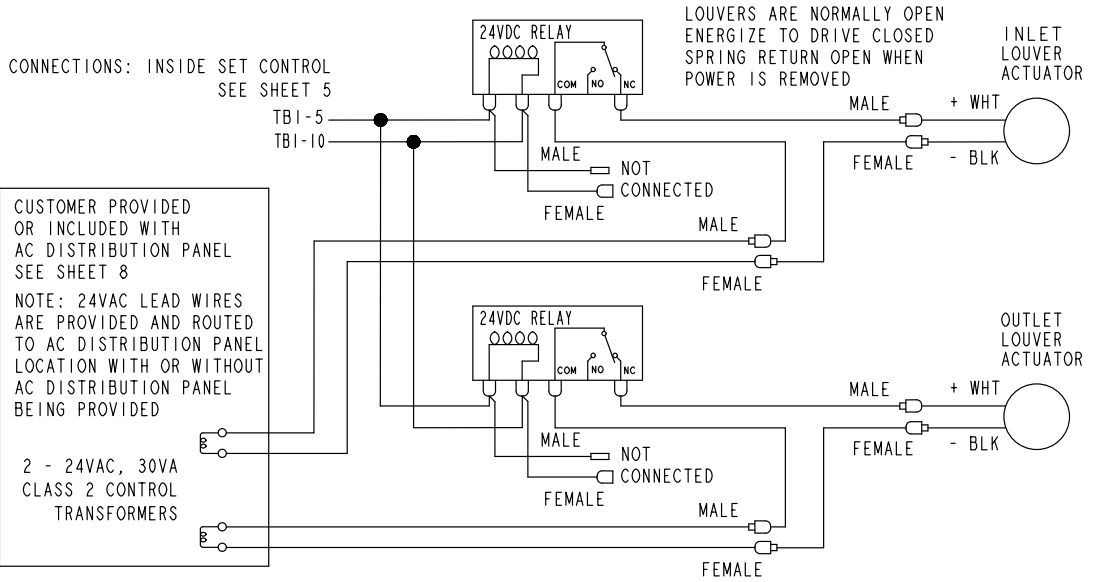
CONNECTIONS: INSIDE SET CONTROL
SEE SHEET 5
NOTE:
WIRE N.C. NOT CONNECTED

THIS IS A REPRESENTATIVE (GENERIC) SCHEMATIC/WIRING DIAGRAM. FOR TROUBLESHOOTING, REFER TO THE WIRING DIAGRAM PACKAGE THAT WAS INCLUDED WITH YOUR GENSET.

INLET AND OUTLET LOUVER CONNECTIONS (DC)

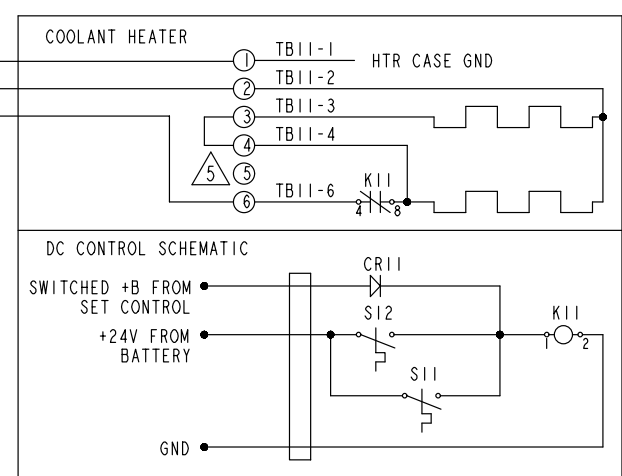
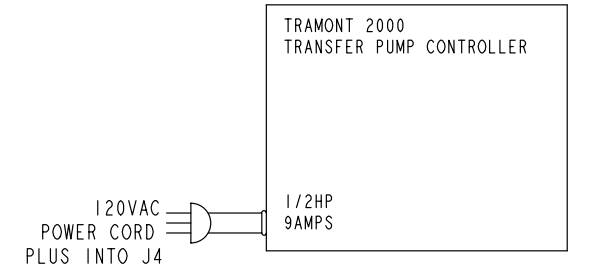
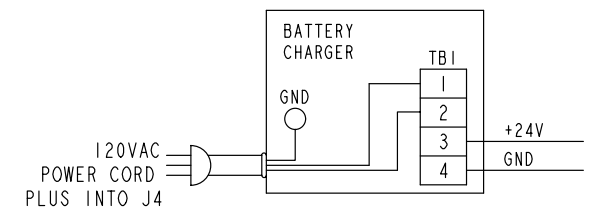
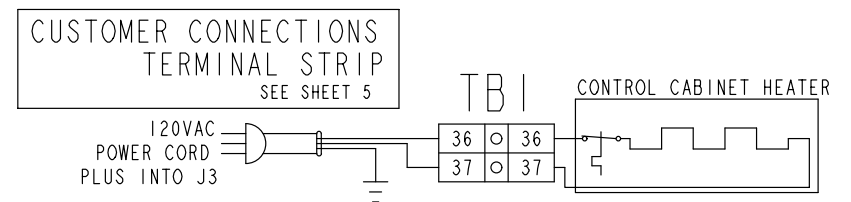
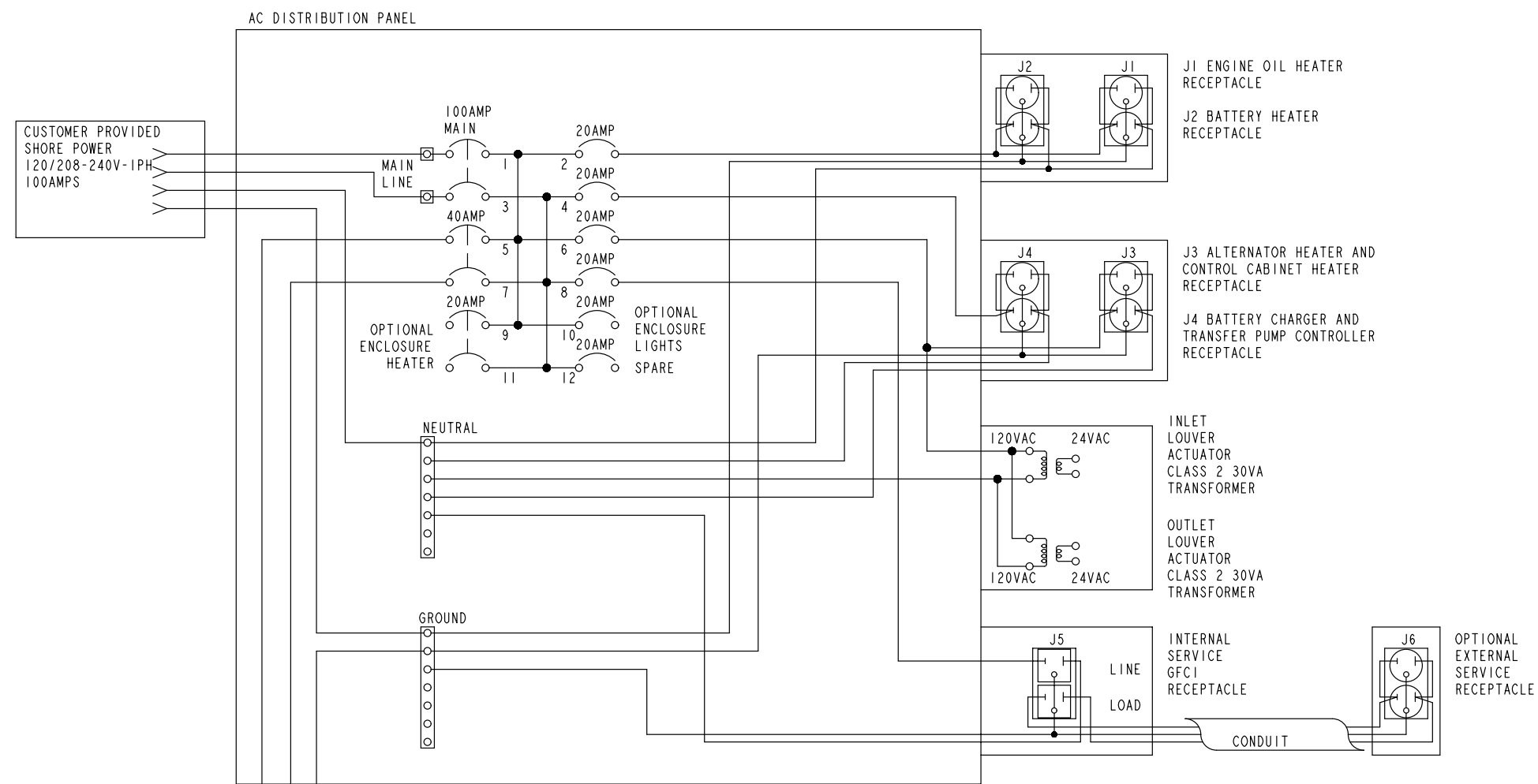


INLET AND OUTLET LOUVER CONNECTIONS (AC)



No. 612-6759 sh 6 of 8
Rev. E
Modified 10-03

THIS IS A REPRESENTATIVE (GENERIC) SCHEMATIC/WIRING DIAGRAM. FOR TROUBLESHOOTING, REFER TO THE WIRING DIAGRAM PACKAGE THAT WAS INCLUDED WITH YOUR GENSET.



- COOLANT HEATER NOTES:
- S11 130F ENGINE THERMOSTAT
 - S12 260F HEATER THERMOSTAT
 - THE HEATER CONTROL RELAY K11 DRAWS 83ma OF CURRENT WHEN THE HEATERS ARE OFF. HEATERS ARE OFF WHEN EITHER:
1) THE ENGINE HAS REACHED STAND-BY TEMPERATURE OR
2) THE ENGINE IS RUNNING
 - FOR COOLANT HEATER MOUNTING SEE OUTLINE DRAWING 500-3139
5. MOVE JUMPER IF (REQUIRED) TO CONNECT TB11-4 TO TB11-3 TO CONFIGURE COOLANT HEATER FOR 240 VOLT OPERATION.

- ⚠ A BATTERY CHARGER IS REQUIRED TO PREVENT BATTERY DISCHARGE
- ⚠ DO NOT ENERGIZE BATTERY CHARGER WITHOUT BATTERY BEING CONNECTED

COOLANT HEATER AMPERAGE TABLE				
SINGLE PHASE HEATER VOLTAGE	FEATURE CODE H556 ONE HEATER		FEATURE CODE H557 ONE HEATER	
	HEATER AMPS	TOTAL WATTS	HEATER AMPS	TOTAL WATTS
208	18.0	3744	23.2	4825
240	20.8	4990	26.75	6420

No. 612-6759 sh 8 of 8
Rev. E
Modified 10-03

Cummins Power Generation
1400 73rd Avenue N.E.
Minneapolis, MN 55432
1-800-888-6626
763-574-5000 International Use
Fax: 763-528-7229

Cummins is a registered trademark of Cummins Inc.

